

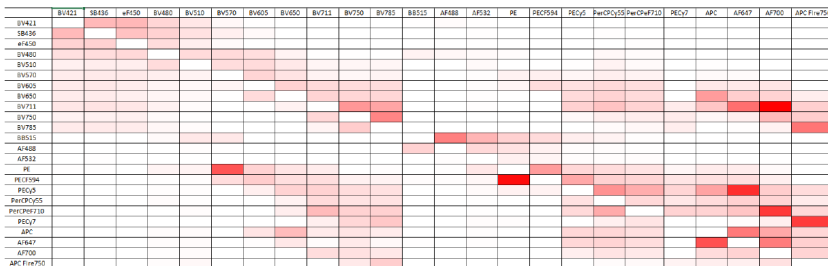
FLOW CYTOMETRY SHARED SERVICE

CIBR: Center for Innovative Biomedical Resources

CORE INSTRUMENTATION

Cytek Aurora Spectral Cytometers

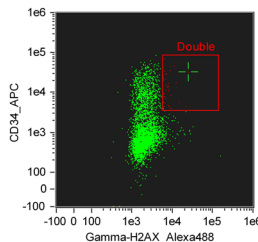
- 3 lasers: 488 nm, 405 nm, 640 nm; 23 colors
- 4 lasers: + 355 nm laser; 30 colors
- 5 lasers: + 561 nm laser; 40 colors
- 5 laser cell sorter, 40 colors, 6 way sort in Biosafety Cabinet
- Removes autofluorescence background
- Small particle detection: 100 nm range



Red represents the spillover from the dye in the row to the dye in column

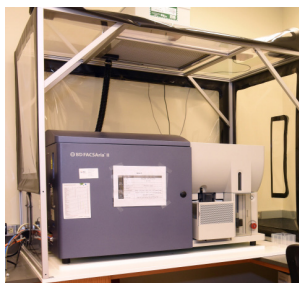
Amnis FlowSight Imaging Cytometer

- 4 lasers: 488 nm, 640 nm, 405 nm, 561 nm
- 10 colors
- 20X magnification



BD Aria II Cell Sorter

- 4 lasers: 488 nm, 633 nm, 405 nm, 552 nm
- 11 colors
- 96-well single cell sorting, 4-way sorting
- BSL-2 enhanced sorting inside of bioBUBBLE enclosure



MISSION

The University of Maryland Greenebaum Comprehensive Cancer Center Flow Cytometry Shared Service (FCSS) offers equipment and technical expertise to the entire campus, as well as outside clients in conducting research in all areas of basic and applied biomedical sciences.

CORE SERVICES

- Experimental design, troubleshooting, consultation and grant application
- Cell sorting performed by staff
- Hands on training on analyzers (Cytek Aurora, LSR II, Canto II, Accuri C6, and FlowSight). Investigators are encouraged to use them independently.
- Monthly lecture covers basic knowledge, useful tools, and new development. Free and open to all.
- Lectures, protocols, panel design templates: <http://sites.google.com/view/umgcccflow>
- Training on analysis software

ONLINE BOOKING

<https://cibr.umaryland.edu>

FLOW CYTOMETRY SHARED SERVICE

CIBR: Center for Innovative Biomedical Resources

Miltenyi MACSQuant Analyzer 10

- Clinical cytometer
- 3 lasers: 488 nm, 405 nm, 640 nm; 8 colors
- Compliance with FDA 21 CFR Part 11



BD LSR II

- 4 lasers: 488 nm, 640 nm, 405 nm, 561 nm
- 13 colors

BD CANTO II

- 2 lasers: 488 nm, 640 nm
- 6 colors

BD Accuri C6

- 2 lasers: 488 nm, 640 nm
- 4 colors

ANALYSIS SOFTWARE



FCS Express 7 Site License

No charge for facility users.



FlowJo Dongles

PC and Mac dongles can be borrowed at no charge.

CONTACT



Xiaoxuan Fan, PhD
Director

XiaoxuanFan@som.umaryland.edu

UMGCC Flow Core Staff

Natarajan Ayithan PhD
Research Associate
nayithan@som.umaryland.edu

Mikayla Trainor
Research Assistant
mtrainor@som.umaryland.edu

LOCATION

Room 7-022, Bressler Research Building
655 West Baltimore Street
Baltimore, MD 21201
410-706-2173
Fax: 410-328-6559

Web Address

[medschool.umaryland.edu/CIBR/
CORE/umgcc_flow](http://medschool.umaryland.edu/CIBR/CORE/umgcc_flow)

Email

XiaoxuanFan@som.umaryland.edu