

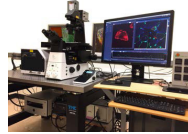
# CONFOCAL MICROSCOPY CORE FACILITY

## DEPARTMENT OF PHYSIOLOGY

### CORE INSTRUMENTATION

#### Nikon W1 Spinning Disk

- Spinning disk confocal
- 7 laser lines for most dyes and fluorescent proteins
- Incubation chamber for live samples
- High speed acquisition, tiling, stitching, reconstructions
- TIRF Imaging
- DMD for photoactivation
- Live SR for high resolution imaging
- FRET Imaging

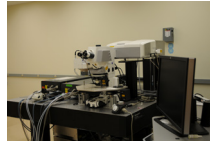


#### Nikon A1 Laser Scanning Confocal

- Point scanning laser confocal
- 4 laser lines for blue, green, red, far red fluorophores
- 2 PMT, 2GaAsP PMT high sensitivity detectors
- Advanced tiling and stitching capabilities
- Automatic z focus tracking

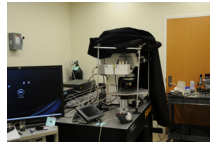
#### Zeiss 710 NLO & Zeiss 7MP

- Upright confocal microscope with single photon and multiphoton excitation capabilities for imaging live cells, slices and whole animals
- Excitation wavelengths 730 to 1300 nm; 2 PMT and 2 sensitive GaAsP detectors
- Provide ability to combine with other measurements (electrophysiology, etc.)



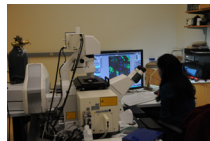
#### Zeiss 5Live

- Point-scanning and slit-scanning confocal microscope
- Fast acquisition frame rates for studying dynamic cellular processes at physiological temperatures
- Dual scan heads (5Live) allow simultaneous imaging and optical manipulation
- Excitation (488, 543, 560, 633)



#### Olympus LCV Incubated Microscope

- Widefield inverted microscope allowing continuous imaging of cells for hours or days
- Fluorescence and DIC imaging on multiple positions
- Cell migration, cell division, wounding and repair processes, phagocytosis



#### Zeiss LS7 Lightsheet Microscope

- Lightsheet microscope for visualization of large 2d and 3d samples
- Six laser lines: 405, 445, 488, 514, 561, 638
- Illumination optics; 5x/0.1 foc, 10x/0.2 foc
- Detection objectives for clearing and water-based samples (2.5x, 5x, 10x, 20x)
- Water chamber with temperature control
- Mesoscale chamber (Translucence Biosystems)
- 2 PCO Edge sCMOS cameras
- Zeiss, Arivis, Imaris Bitplane analysis software

#### Imaris Bitplane

Bitplane is an advanced image analysis software for processing images. 3D renditions, display and quantification are readily executed. Some imaging suites are specialized for certain applications, e.g. neurofilament tracing. Other common processing routines are available. The confocal core operates a floating license server which allows easy operation of the software.

### MISSION

The Confocal Core's mission is to provide researchers with a wide array of state-of-the-art confocal imaging equipment to enable acquisition of high resolution images (both *in vivo* and *in vitro*). The Confocal Core offers training and assistance in the use of multiple confocal microscopes housed in our facility. Optimization of data acquisition and image processing are both part of the training, thus enabling researchers to efficiently design studies, acquire image data and extract relevant data features. The confocal facility is available to all UMB researchers and extramural users on a fee-for-service basis.

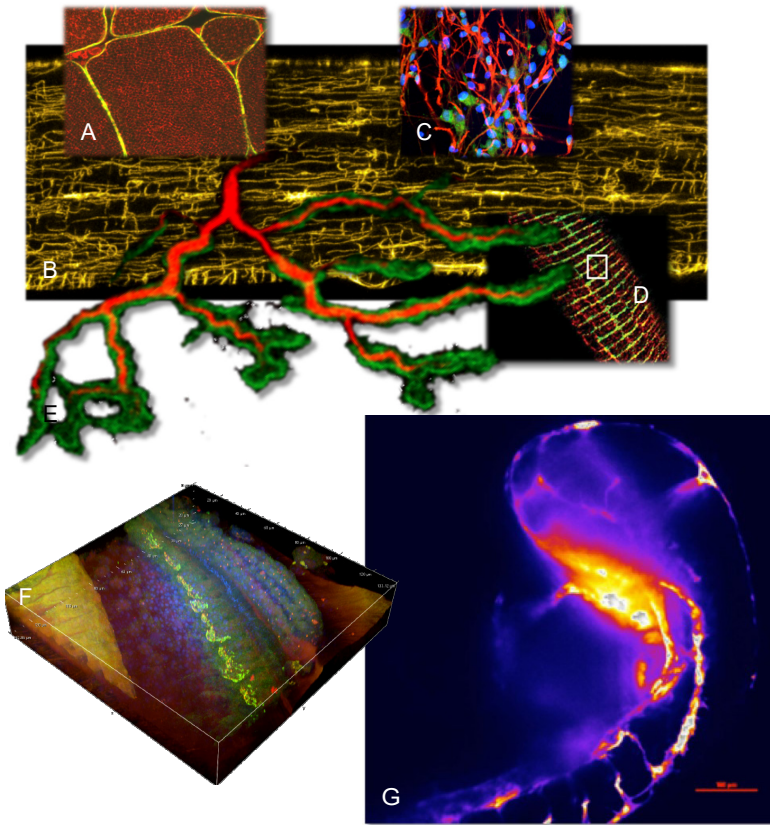
### CORE SERVICES

The facility provides individual instruction on an array of confocal microscopes. The needs of the researcher are considered in choosing which microscope will best suit the experimental design. In general, imaging of fixed samples, cultured cells, organ slices and small animals can be accommodated. Imaging techniques including FRET, FRAP, photoactivation and uncaging are readily implemented. The microscopes have excitation sources that cover most fluorophores with excitation ranging from 355-633 nm. Multiphoton excitation of fluorophores is also available on select instruments. An image analysis workstation is available to users.

The Core also has a culture room with an incubator, culture hood and a widefield fluorescence microscope for use in preparation of cultured and live samples. Preparation of live animals for imaging experiments can also be performed in this newly renovated space.

# CONFOCAL MICROSCOPY CORE FACILITY

## DEPARTMENT OF PHYSIOLOGY



### CONTACT



Thomas Blanpied, PhD, Director  
Department of Physiology  
Room 505, Howard Hall  
tBlanpied@som.umaryland.edu  
410-706-4769



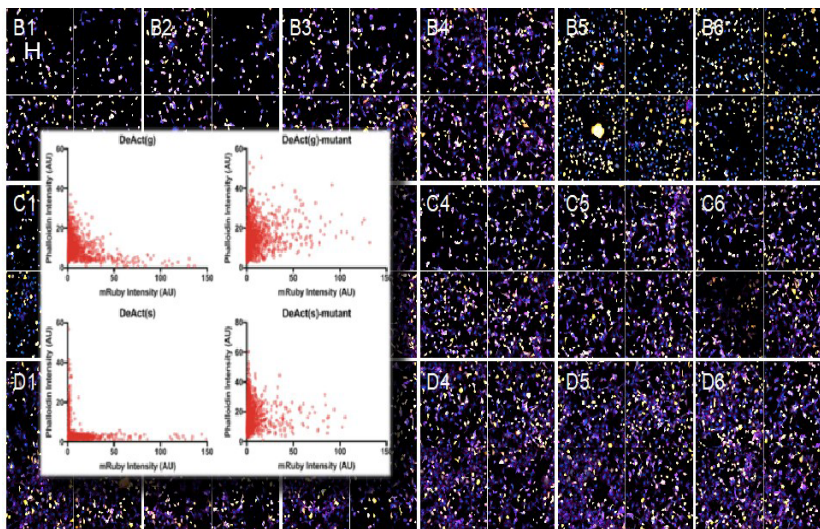
Joseph Ryan H. Mauban, PhD  
Confocal Core Manager  
Department of Physiology  
Room 523, Howard Hall  
jmauban@som.umaryland.edu



Yajie (Kevin) Liang, MB, PhD  
Assistant Professor  
Department of Radiology and Nuclear  
Medicine  
HSF III, Room L127Y  
yajie.liang@som.umaryland.edu

### LOCATION

Room 610, Health Sciences Facility I  
685 West Baltimore Street  
Baltimore, MD 21201  
410-706-6170



A-Bloch, B-Ward, C-Feldman, D-Bloch,  
E-Lovering, F-Ahmed, G-Martin, H-Blanpied