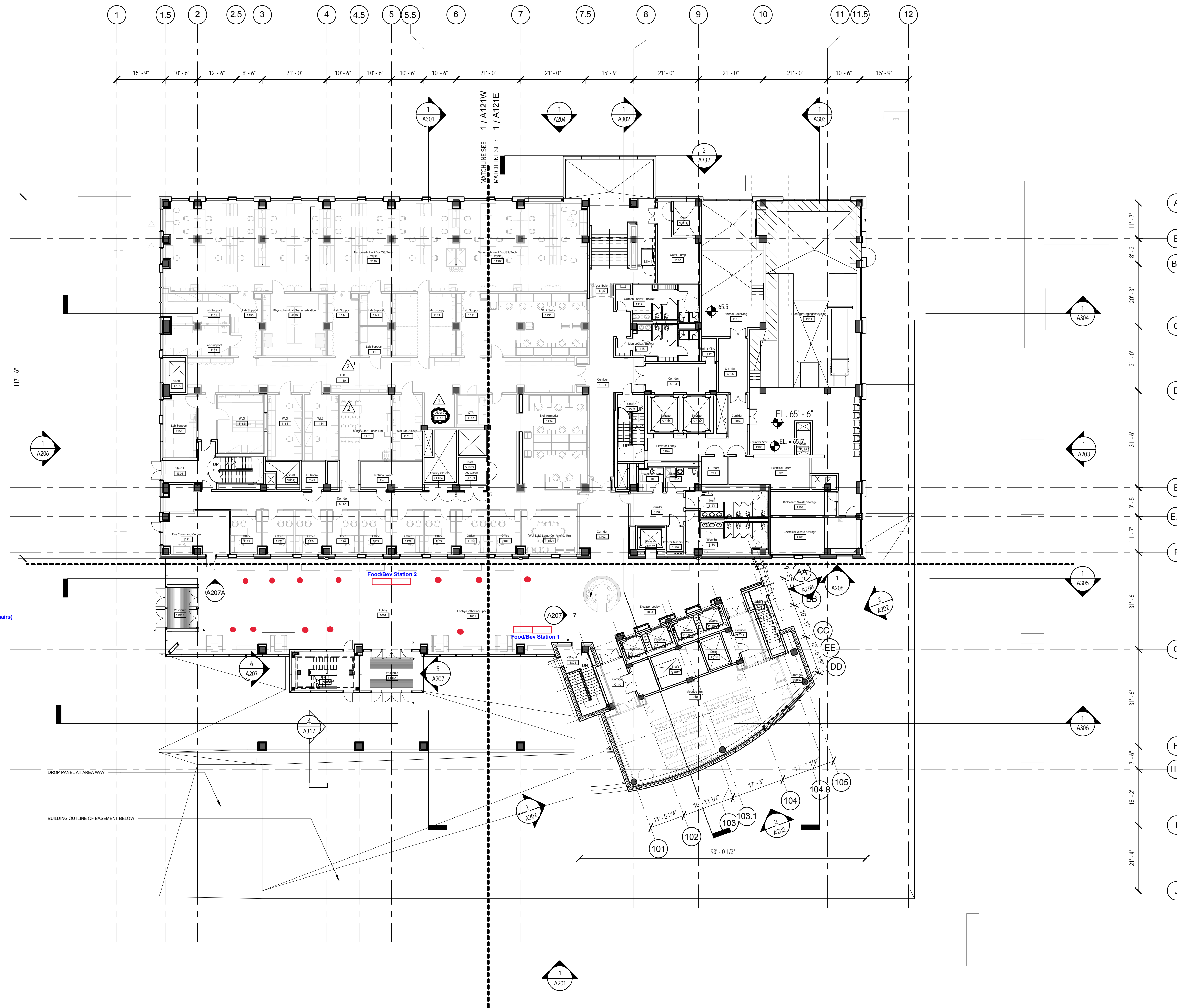


FLOOR PLAN NOTES

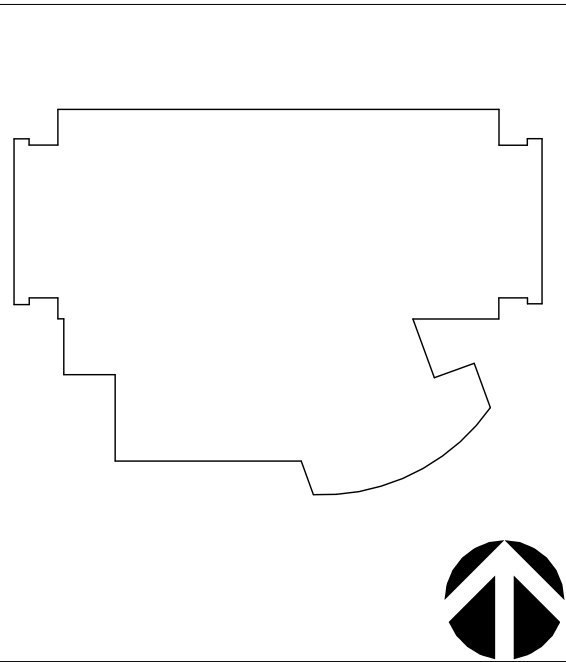
1. THE COMPOSITE FLOOR PLANS ARE PRIMARILY FOR ORIENTATION. REFER TO THE EAST-WEST FLOOR PLANS FOR DIMENSIONS, DETAIL KEYS, WALL TAGS AND OTHER REFERENCES.



1 COMPOSITE FLOOR PLAN - LEVEL 01
1/16" = 1'-0"



ADMINISTRATION & FINANCE
FACILITIES MANAGEMENT
ARCHITECTURE, ENGINEERING &
CONSTRUCTION DIVISION
220 ARCH STREET, OFFICE LEVEL 3
BALTIMORE, MARYLAND 21201
PHONE NO. (410) 706-7740
FAX NO. (410) 706-8547
UMB EMERGENCY PHONE NUMBERS
UMB POLICE (410)706-6882
UMB WORK CONTROL (410)706-7570



- A/E CONSULTANTS**
- HOK**
Architect
2223 Green Street, NW
Washington, DC 20007
 - Design Collective**
Associate Architect
601 East Park Street, Suite 300
Baltimore, MD 21202
 - A/EI Engineers**
ME Engineers
401 N. Washington St, Suite 400
Rockville, MD 20850
 - WFT Engineers**
Planning / A P P Engineers
9777 Washington Blvd, Suite 588
Gaithersburg, MD 20878
 - Cugley & Associates**
Structural Engineer
6141 Executive Blvd.
Rockville, MD 20852
 - Site Resources**
Civil Engineer / Landscape Architect
1415 Lorettoville Pike
Pikesville, MD 21113-0249
 - Jacobs Consultancy**
Lab Planning
303 South Broadway, Suite G20
Tarrytown, NY 10591
 - Melville Thomas Architects, Inc.**
Interior Architects
600 Wyndhurst Ave, Suite 315
Baltimore, MD 21210

PROFESSIONAL CERTIFICATION: I HEREBY CERTIFY THAT THESE DOCUMENTS WERE PREPARED OR APPROVED BY ME, AND THAT I AM A QUALIFIED PROFESSIONAL ENGINEER UNDER THE LAWS OF THE STATE OF MARYLAND.
LICENSE NO. _____
EXPIRATION DATE: _____

REGISTRATION / STAMP

PROJECT TITLE:
HEALTH SCIENCES FACILITY III

UMB BUILDING NO.: HSF III
UMB PROJECT NO.: 11-385
A/E PROJECT NO.: 12.14006.00
CAD FILE NO.:
DATE: 11/14/2014
DONOR NAME: _____

SHEET TITLE:
COMPOSITE FLOOR PLAN - LEVEL ONE

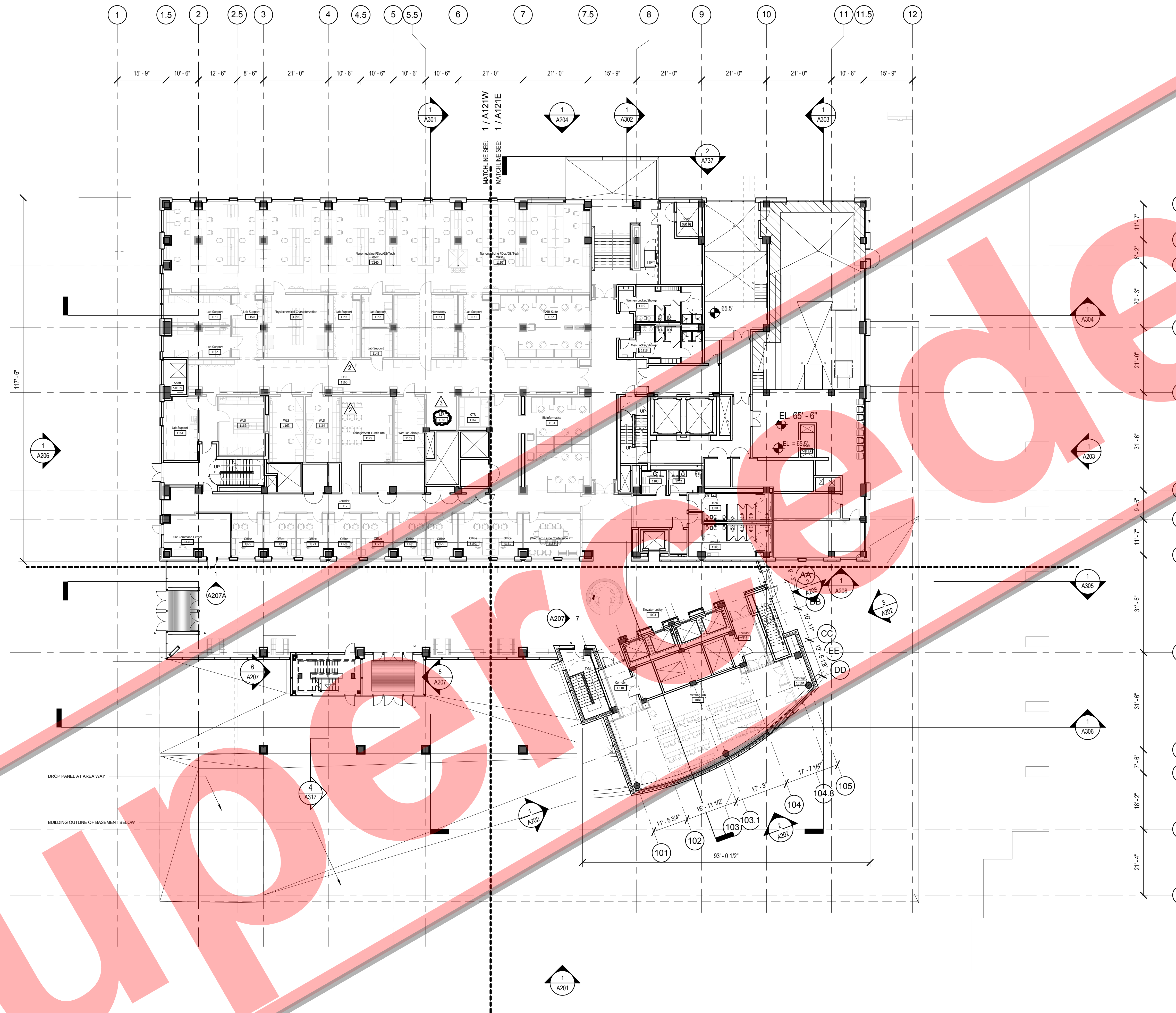
Revisions		
No.	Date	Item
1	11/14/14	Confirmed Set
2	09/16/15	Bulletin 25
3	08/26/16	Bulletin 31

Arch Index
Main Index

SHEET NO.
A101

FLOOR PLAN NOTES

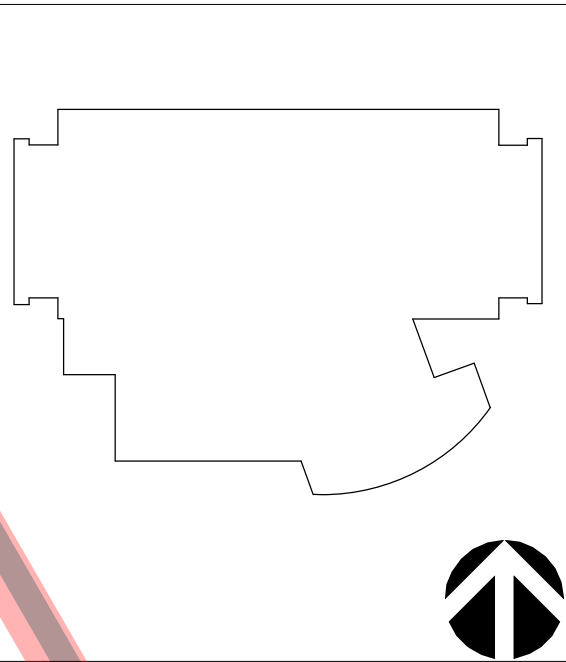
1. THE COMPOSITE FLOOR PLANS ARE PRIMARILY FOR ORIENTATION. REFER TO THE EAST-WEST FLOOR PLANS FOR DIMENSIONS, DETAIL KEYS, WALL TAGS AND OTHER REFERENCES.



1 COMPOSITE FLOOR PLAN - LEVEL 01
1/16" = 1'-0"



ADMINISTRATION & FINANCE
 FACILITIES MANAGEMENT
 ARCHITECTURE, ENGINEERING &
 CONSTRUCTION DIVISION
 220 ARCH STREET, OFFICE LEVEL 3
 BALTIMORE, MARYLAND 21201
 PHONE NO. (410) 706-7740
 FAX NO. (410) 706-8547
 UMB EMERGENCY PHONE NUMBERS
 UMB POLICE (410)706-6882
 UMB WORK CONTROL (410)706-7570



- A/E CONSULTANTS**
- HOK**
Architect
3223 Green Street, NW
Washington, DC 20007
 - Design Collective**
Associate Architect
601 East Pratt Street, Suite 300
Baltimore, MD 21202
 - A/EI Engineers**
ME Engineers
401 N. Washington St, Suite 400
Rockville, MD 20850
 - WFT Engineers**
Planning/EA/FP Engineers
9777 Washington Blvd, Suite 588
Gaithersburg, MD 20878
 - Cngly & Associates**
Structural Engineer
6141 Executive Blvd,
Rockville, MD 20852
 - Site Resources**
Civil Engineer / Landscape Architect
14315 Lantonsville Pike
Pikesville, MD 21113-0249
 - Jacobs Consultancy**
Lab Planning
303 South Broadway, Suite G20
Tarrytown, NY 10591
 - Melville Thomas Architects, Inc.**
Interior Architects
606 Wyndhurst Ave, Suite 315
Baltimore, MD 21210

PROFESSIONAL CERTIFICATION: I HEREBY CERTIFY THAT THESE DOCUMENTS WERE PREPARED OR APPROVED BY ME, AND THAT I AM A QUALIFIED PROFESSIONAL ENGINEER UNDER THE LAWS OF THE STATE OF MARYLAND.
 LICENSE NO.:
 EXPIRATION DATE:

REGISTRATION / STAMP

PROJECT TITLE:
HEALTH SCIENCES FACILITY III

UMB BUILDING NO.: HSF III
 UMB PROJECT NO.: 11-385
 A/E PROJECT NO.: 12.14006.00
 CAD FILE NO.:
 DATE: 11/14/2014
 DONOR NAME:

SHEET TITLE:
COMPOSITE FLOOR PLAN - LEVEL ONE

Revisions		
No.	Date	Item
1	11/14/14	Conformed Set
2	09/16/15	Bulletin 25
3	06/22/16	Bulletin 31

Arch Index
 Main Index

SHEET NO.
A101

FLOOR PLAN NOTES

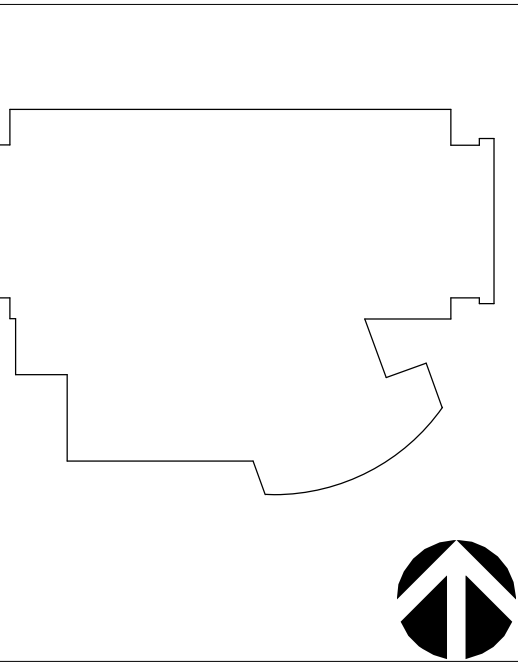
1. THE COMPOSITE FLOOR PLANS ARE PRIMARILY FOR ORIENTATION. REFER TO THE EAST-WEST FLOOR PLANS FOR DIMENSIONS, DETAIL KEYS, WALL TAGS AND OTHER REFERENCES.



1 COMPOSITE FLOOR PLAN - LEVEL 01
1/16" = 1'-0"



ADMINISTRATION & FINANCE
FACILITIES MANAGEMENT
ARCHITECTURE, ENGINEERING &
CONSTRUCTION DIVISION
220 ARCH STREET, OFFICE LEVEL 3
BALTIMORE, MARYLAND 21201
PHONE NO. (410) 706-7740
FAX NO. (410) 706-8547
UMB EMERGENCY PHONE NUMBERS
UMB POLICE (410) 706-6882
UMB WORK CONTROL (410) 706-7570



A/E CONSULTANTS

- HOK**
Architect
3223 Green Street, NW
Washington, DC 20007
- Design Collective**
Associate Architect
401 East Pratt Street, Suite 300
Baltimore, MD 21202
- A/EI Engineers**
ME Engineers
401 N. Washington St., Suite 400
Rockville, MD 20850
- WFT Engineers**
Planning & P/E Engineers
9777 Washington Blvd., Suite 588
Gaithersburg, MD 20878
- Cugley & Associates**
Structural Engineer
6141 Executive Blvd.
Rockville, MD 20852
- Site Resources**
Civil Engineer / Landscape Architect
14315 Lantonsville Pike
Pikesville, MD 21113-0249
- Jacobs Consultancy**
Lab Planning
303 South Broadway, Suite G20
Tarrytown, NY 10591
- Melville Thomas Architects, Inc.**
Interior Architects
600 Wyandburn Ave., Suite 315
Baltimore, MD 21210

PROFESSIONAL CERTIFICATION: I HEREBY CERTIFY THAT THESE DOCUMENTS WERE PREPARED OR APPROVED BY ME, AND THAT I AM A QUALIFIED PROFESSIONAL ENGINEER UNDER THE LAWS OF THE STATE OF MARYLAND.

LICENSE NO.: _____
EXPIRATION DATE: _____

REGISTRATION / STAMP

PROJECT TITLE:
**HEALTH
SCIENCES
FACILITY III**

UMB BUILDING NO.: HSF III
UMB PROJECT NO.: 11-385
A/E PROJECT NO.: 12.14006.00
CAD FILE NO.:
DATE: 11/14/2014
DONOR NAME: _____

SHEET TITLE:
**COMPOSITE
FLOOR PLAN -
LEVEL ONE**

Revisions		
No.	Date	Item
1	11/14/14	Conformed Set
2	09/16/15	Bulletin 25

Arch Index
Main Index

SHEET NO.
A101

FLOOR PLAN NOTES

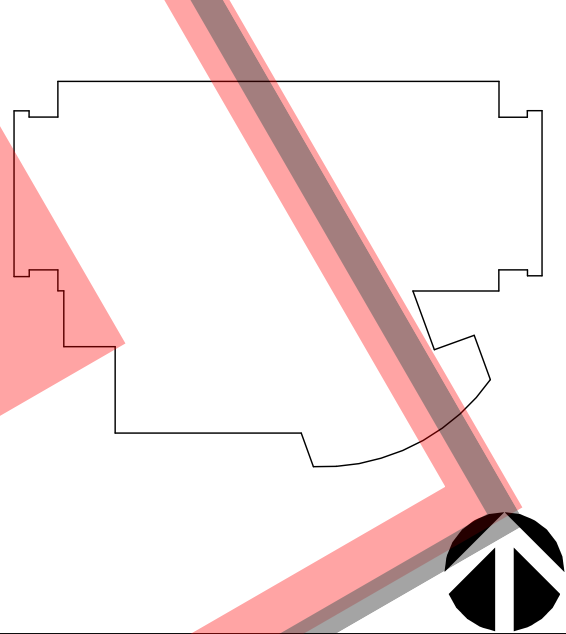
1. THE COMPOSITE FLOOR PLANS ARE PRIMARILY FOR ORIENTATION. REFER TO THE EAST-WEST FLOOR PLANS FOR DIMENSIONS, DETAIL KEYS, WALL TAGS AND OTHER REFERENCES.



ADMINISTRATION & FINANCE
 FACILITIES MANAGEMENT
 ARCHITECTURE, ENGINEERING &
 CONSTRUCTION DIVISION
 220 ARCH STREET, OFFICE LEVEL 3
 BALTIMORE, MARYLAND 21201
 PHONE NO. (410) 706-7740
 FAX NO. (410) 706-8547
 UMB EMERGENCY PHONE NUMBERS
 UMB POLICE (410)706-6882
 UMB WORK CONTROL (410)706-7570



1 COMPOSITE FLOOR PLAN - LEVEL 01
 1/16" = 1'-0"



- A/E CONSULTANTS**
- HOK**
Architect
2223 Green Street, NW
Washington, DC 20007
 - Design Collective**
Associate Architect
601 East Pratt Street, Suite 300
Baltimore, MD 21202
 - A/EI Engineers**
ME Engineers
401 N. Washington St., Suite 400
Rockville, MD 20850
 - WFT Engineers**
Planning / IA / PP Engineers
9777 Washington Blvd., Suite 588
Gaithersburg, MD 20878
 - Cugley & Associates**
Structural Engineer
6141 Executive Blvd.
Rockville, MD 20852
 - Site Resources**
Civil Engineer / Landscape Architect
14315 Lanterville Pike
Poolesville, MD 21134-0249
 - Jacobs Consultancy**
Lab Planning
303 South Beachway, Suite G20
Tarrytown, NY 10591
 - Melville Thomas Architects, Inc.**
Interior Architects
600 Wyandham Ave., Suite 315
Baltimore, MD 21210

PROFESSIONAL CERTIFICATION: I HEREBY CERTIFY THAT THESE DOCUMENTS WERE PREPARED OR APPROVED BY ME, AND THAT I AM A QUALIFIED PROFESSIONAL ENGINEER UNDER THE LAWS OF THE STATE OF MARYLAND.
 LICENSE NO. _____
 EXPIRATION DATE: _____

REGISTRATION / STAMP

PROJECT TITLE:
HEALTH SCIENCES FACILITY III

UMB BUILDING NO.: HSF III
 UMB PROJECT NO.: 11-385
 A/E PROJECT NO.: 12.14006.00
 CAD FILE NO.:
 DATE: 11/14/2014
 DONOR NAME:

SHEET TITLE:
COMPOSITE FLOOR PLAN - LEVEL ONE

Revisions		
No.	Date	Item
1	11/14/14	Conformed Set

SHEET NO.
A101

Arch Index
 Main Index