

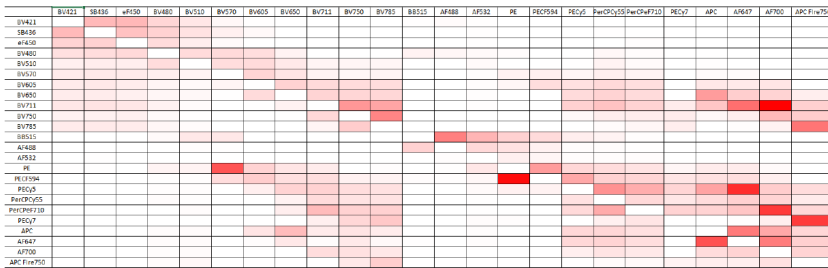
FLOW CYTOMETRY SHARED SERVICE

CIBR: Center for Innovative Biomedical Resources

CORE INSTRUMENTATION

2 Cytex Aurora Spectral Cytometers

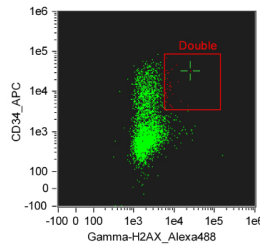
- 3 lasers: 488 nm, 405 nm, 640 nm; 23 colors
- 4 Lasers with 355 nm laser, 30 colors
- Ready to use panels provided
- Removes autofluorescence background
- Small particle detection: 100 nm range



Red represents the spillover from the dye in the row to the dye in column

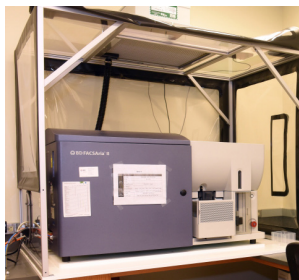
Amnis FlowSight Imaging Cytometer

- 4 lasers: 488 nm, 640 nm, 405 nm, 561 nm
- 10 colors
- 20X magnification
- Autosampler



BD Aria II Cell Sorter

- 4 lasers: 488 nm, 633 nm, 405 nm, 552 nm
- 11 colors
- 96-well single cell sorting, 4-way sorting, index sorting
- BSL-2 enhanced sorting inside of bioBUBBLE enclosure



MISSION

The University of Maryland Greenebaum Comprehensive Cancer Center Flow Cytometry Shared Service (FCSS) offers equipment and technical expertise to the entire campus, as well as outside clients in conducting research in all areas of basic and applied biomedical sciences.

CORE SERVICES

- Experimental design, troubleshooting, consultation and grant application
- Cell sorting performed by staff
- Monthly lecture covers basic knowledge, useful tools, and new development. Free and open to all.
- Hands on training on analyzers (LSR II, Canto II, Accuri C6, and FlowSight) Investigators are encouraged to use the analyzers independently.
- Training on analysis software

ONLINE BOOKING

<https://cibr.umaryland.edu>

FLOW CYTOMETRY SHARED SERVICE

CIBR: Center for Innovative Biomedical Resources

Miltenyi MACSQuant Analyzer 10

- Clinical cytometer
- 3 lasers: 488 nm, 405 nm, 640 nm; 8 colors
- Compliance with FDA 21 CFR Part 11
- Express Modes automate the analysis



BD LSR II

- 4 lasers: 488 nm, 640 nm, 405 nm, 561 nm
- 13 colors

BD CANTO II

- 2 lasers: 488 nm, 640 nm
- 6 colors

BD Accuri C6

- 2 lasers: 488 nm, 640 nm
- 4 colors

ANALYSIS SOFTWARE



FCS Express 7 Site License
No charge for facility users.



FlowJo Dongles
PC and Mac dongles can be borrowed at no charge.

CONTACT



Xiaoxuan Fan, PhD
Director
XiaoxuanFan@som.umaryland.edu



Karen Underwood, MS
Research Lead Specialist
kunderwood@som.umaryland.edu

Bryan Hahn, BS
Laboratory Research Specialist
BryanHahn@som.umaryland.edu

LOCATION

Room 7-022, Bressler Research Building
655 West Baltimore Street
Baltimore, MD 21201
410-706-2173
Fax: 410-328-6559

Web Address

medschool.umaryland.edu/CIBR/CORE/umgccc_flow

Email

XiaoxuanFan@som.umaryland.edu