

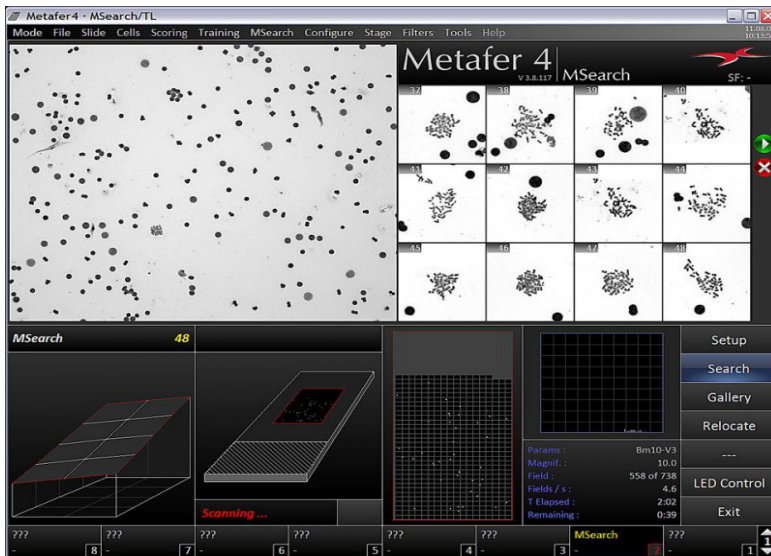
CYTOGENETICS LABORATORY

CIBR: Center for Innovative Biomedical Resources

CORE INSTRUMENTATION

Automatic Interphase and Metaphase Finder

Metasystems Metafer Slide Scanner and Ikaros/Isis Analysis Software are powerful tools.



- Automatic export of high resolution images for analysis

Major equipment available:

- Metasystems Metafer Slide Scanner and Ikaros/Isis Analysis Software
- Nikon TMS microscope w/Fluorescence
- Olympus AX-70 microscope
- Olympus BHSM microscope
- Olympus BX-41 microscope
- Olympus BX-41 w/Fluorescence
- Zeiss Axiophot microscope
- Zeiss Axioskop microscope

MISSION

Our laboratory offers cytogenetic and genomic diagnosis for both constitutional and acquired chromosome abnormalities. We focus on the detection and characterization of chromosome abnormalities in hematological malignancies.

CORE SERVICES

Our laboratory is a CLIA-certified and CAP-accredited facility that provides comprehensive cytogenetic diagnosis on multiple sample types including peripheral blood, bone marrow, fibroblasts and tissues. We also participate in clinical trial studies. The techniques used in the laboratory included karyotyping, fluorescence in situ hybridization (FISH), and SNP-microarray analyses. Our dedicated team includes an American Board of Medical Genetics and Genomics-certified clinical cytogeneticist and highly-experienced supervisors and technologists.

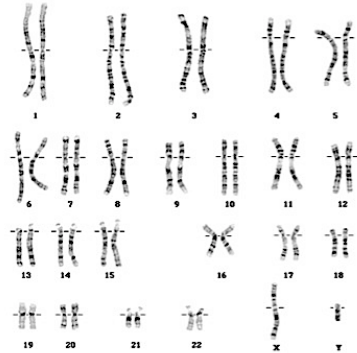
SERVICES OFFERED

- Chromosome Studies on multiple sample types including peripheral blood, bone marrow, fibroblasts and solid tissues (Karyotype).
- FISH testing
- Microarray analyses (Data analyses)

CYTOGENETICS LABORATORY

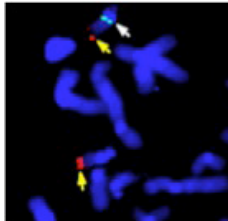
CIBR: Center for Innovative Biomedical Resources

Chromosome Studies (Karyotype)

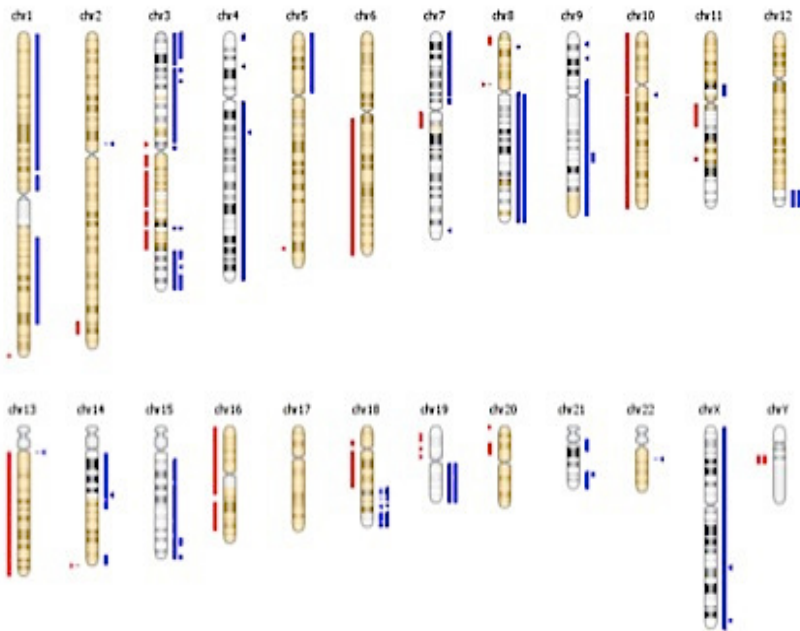


FISH Testing

- Whole chromosome painting
- Centromere probes
- Subtelomere probes
- Microdeletion probes
- Cancer probes
- Other locus-specific probes



Cytogenomic Microarray Analyses



Cytogenomic microarray analyses of a solid tumor revealed duplications (in blue lines), deletions (in red line) and CN-LOH regions (yellow in cytobands)

CONTACT



Yi Ning, PhD, FACMG
Professor of Pathology
Director, Cytogenetics Laboratory
Department of Pathology

yning@som.umaryland.edu

Elizabeth Waters, Supervisor
410-706-4063
ewaters@som.umaryland.edu

Melody Butler, Supervisor
410-706-2809
mbutler@som.umaryland.edu

LOCATION

Room 7-049, Bressler Research Building
655 West Baltimore Street
Baltimore, MD 21201
410-706-2809

Web Address

<http://medschool.umaryland.edu/cibr/Cytogenetics>