

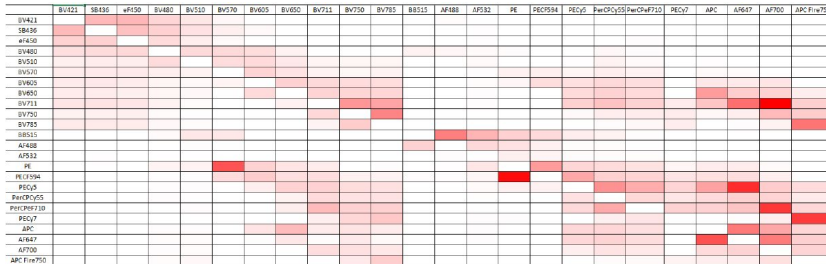
# FLOW CYTOMETRY SHARED SERVICE

CIBR: Center for Innovative Biomedical Resources

## CORE INSTRUMENTATION

### Cytek Aurora Spectral Cytometer

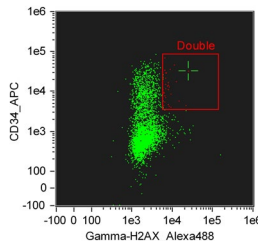
- 3 lasers: 488 nm, 405 nm, 640 nm
- > 20 color detection
- Use 38 high sensitive APD detectors to read the whole spectrum of each color
- Resolve colors with similar emission spectrums
- Small particle detection: 100 nm range



Red represents the spillover from the dye in the row to the dye in column

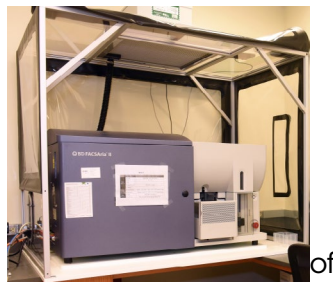
### Amnis FlowSight Imaging Cytometer

- 4 lasers: 488 nm, 640 nm, 405 nm, 561 nm
- 10 colors
- 20X magnification
- Autosampler



### BD Aria II Cell Sorter

- 4 lasers: 488 nm, 633 nm, 405 nm, 552 nm
- 11 colors
- 96-well single cell sorting, 4-way sorting, index sorting
- BSL-2 enhanced sorting inside bioBUBBLE enclosure



## MISSION

The University of Maryland Greenebaum Comprehensive Cancer Center Flow Cytometry Shared Service (FCSS) offers equipment and technical expertise to the entire campus, as well as outside clients in conducting research in all areas of basic and applied biomedical sciences.

## CORE SERVICES

- Experimental design, troubleshooting, consultation and grant application
- Cell sorting performed by staff
- Monthly lecture covers basic knowledge, useful tools, and new development. Free and open to all.
- Hands on training on analyzers (LSR II, Canto II, Accuri C6, and FlowSight) Investigators are encouraged to use the analyzers independently.
- Training on analysis software

## ONLINE BOOKING

<https://cibr.umaryland.edu>

# FLOW CYTOMETRY SHARED SERVICE

**CIBR: Center for Innovative Biomedical Resources**

## BD LSR II

- 4 lasers: 488 nm, 640 nm, 405 nm, 561 nm
- 13 colors
- High throughput sampler



Image courtesy of BD Biosciences

## BD CANTO II

- 2 lasers: 488 nm, 640 nm
- 6 colors



## BD Accuri C6

- 2 lasers: 488 nm, 640 nm
- 4 colors
- Volume measurement
- Located in HSF II, S107



Image courtesy of BD Biosciences

## ANALYSIS SOFTWARE



### FCS Express 6 Site License

No charge for facility users.



### FlowJo Dongles

PC and Mac dongles can be borrowed at no charge.

## CONTACT



Xiaoxuan Fan, PhD  
Director  
XiaoxuanFan@som.umaryland.edu



Karen Underwood, BS  
Research Lead Specialist  
kunderwood@som.umaryland.edu

Bryan Hahn, BS  
Cell Sorter Operator  
BryanHahn@som.umaryland.edu

## LOCATION

Room 7-022, Bressler Research Building  
655 West Baltimore Street  
Baltimore, MD 21201  
410-706-2173  
Fax: 410-328-6559

## Web Address

[http://medschool.umaryland.edu/cibr/UMGCCC\\_Flow](http://medschool.umaryland.edu/cibr/UMGCCC_Flow)

## Email

XiaoxuanFan@som.umaryland.edu