

Psychiatry Remote Desktop

Psychiatry now offers remote access via Microsoft's Windows Virtual Desktop service: – Psych Virtual Desktop. This is a generic desktop that will allow you access to the most common applications used by faculty and staff including EPIC, IDX, access to the F: and H: drives and all Microsoft Office products. To request access, please submit a service request at <https://psychis.umaryland.edu>.

- Please save all work to your H: drive, F: drive, or OneDrive.
- There is no printer redirection. This means you cannot print to local printers or networked printers from Windows Virtual Desktop
- If one browser does not work, please try another browser or click the refresh button.

Instructions


Navigate to <https://portal.office.com> with Mozilla Firefox, Google Chrome, Microsoft Edge, or Apple Safari and login with your login credentials.

Select the waffle/keypad icon in the upper-left corner




Choose All Apps


Apps

 Outlook

 Word

 PowerPoint

 SharePoint

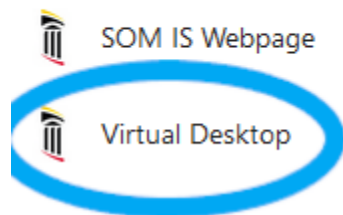
 Class Notebook

 Forms

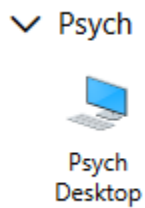
All apps →

Scroll down, select Virtual Desktop to launch the Remote Desktop web client

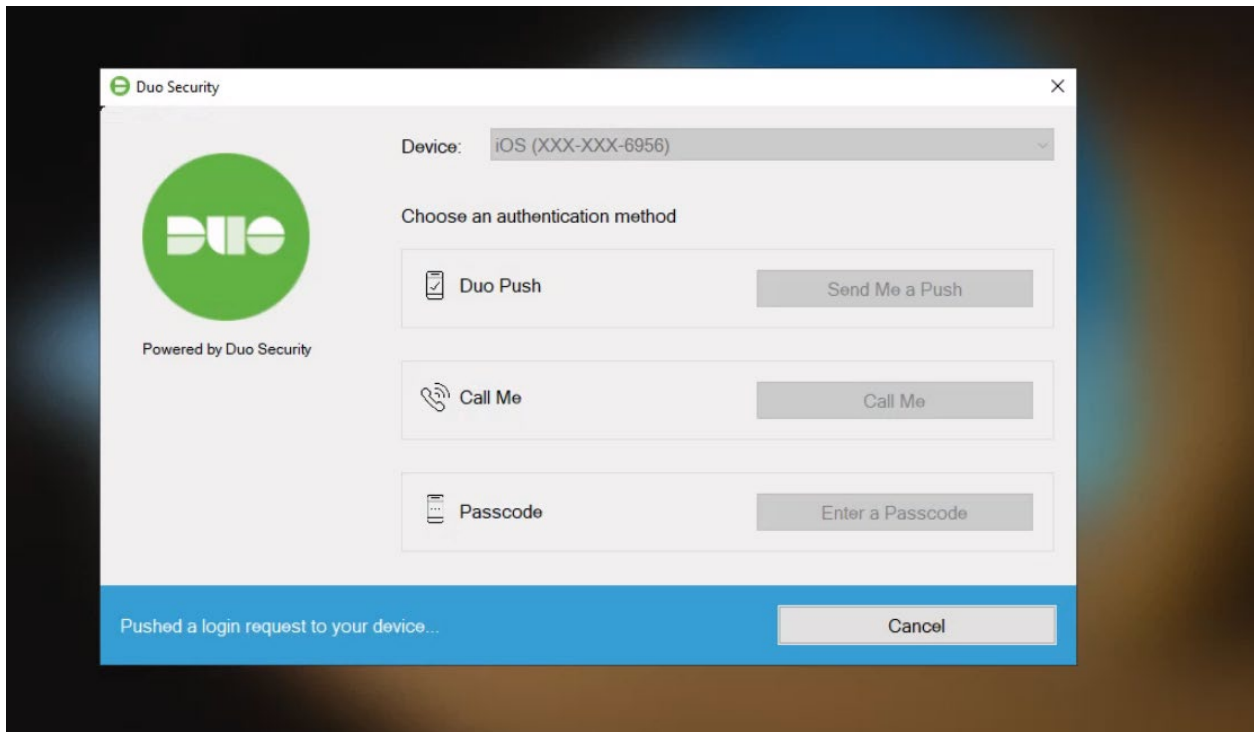
Admin selected apps



You will see the Psych Desktop under Psych. Click on the Psych Desktop one time



You will be presented with a Duo icon which will send you a push or make a call



Your account will automatically login. Please note this is not your desktop at work. This is a generic desktop.