

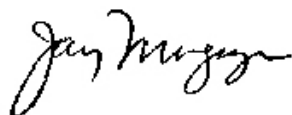
August 26, 2019

E. Albert Reece, MD, PhD, MBA  
Dean and Vice President for Medical Affairs  
14<sup>th</sup> Floor Bressler Research Building  
655 West Baltimore Street  
Baltimore, Maryland 21201

Dear Dean Reece:

Enclosed please find the Department of Epidemiology and Public Health's fiscal year 2019 annual report. I am pleased to report that the department had a productive year by building on our assets in research, education, clinical care, leadership and community outreach. As a department, we also had opportunities to build new relationships and strengthen current collaborations as we remained focused on the School of Medicine's mission areas.

Sincerely,



Jay Magaziner, Ph.D., M.S.Hyg.  
Professor and Chair

Enclosure



University of Maryland  
School of Medicine

**DEPARTMENT OF EPIDEMIOLOGY AND PUBLIC HEALTH**

**Fiscal Year 2018 Annual Report**  
(July 1, 2018-June 30, 2019)

Chair:  
Jay Magaziner, PhD, MS Hyg

**DEPARTMENT OF EPIDEMIOLOGY AND PUBLIC HEALTH**

**Fiscal Year 2019 Annual Report  
Table of Contents**

| <b><u>CONTENTS</u></b>            | <b><u>PAGE</u></b> |
|-----------------------------------|--------------------|
| <b>Executive Summary</b> .....    | 1                  |
| <b>FY19 Accomplishments</b> ..... | 2                  |
| Research                          |                    |
| Education                         |                    |
| Clinical Care                     |                    |
| Community Outreach                |                    |
| Leadership                        |                    |
| • Administration                  |                    |
| • Finance                         |                    |
| • Development                     |                    |
| <b>FY19 We Wills</b> .....        | 5                  |
| <b>FY20 We Wills</b> .....        | 9                  |
| <b>Appendix</b> .....             | 13                 |
| A - Organizational Chart          |                    |
| B – Publications                  |                    |
| C - Academic Awards/Honors        |                    |

## EPH EXECUTIVE SUMMARY FOR FISCAL YEAR 2019

The executive summary below outlines the department's activities in fiscal year 2019 (FY2019).

**Research.** EPH faculty remained focused on reaching the SOM mission areas related to research. EPH faculty published a total of 213 peer-reviewed papers. More than 103 grant applications, requesting \$61.8m in TCs were submitted.

Active extramural awards to all faculty with primary appointments in EPH totaled \$45m and averaged \$978,072 per full time EPH faculty member. Overall, awards were up by 25% from FY2018 (details provided on following pages). Eighty-seven percent of EPH faculty receive funding from federal sources and the department will strive to maintain this high level of funding in FY2020. The 2018 Blue Ridge Report on NIH funding ranked EPH #4 among like departments in schools of medicine nationwide and ranked EPH #1 among public institutions. Two faculty, Owen White and Jay Magaziner, ranked among the top 20 NIH funded faculty in schools of medicine nationally in 2018.

The Program in Health Disparities and Population Health expanded the membership to 73 faculty affiliates, 57 from SOM. In FY19, there were 331 active health disparities related grants totaling \$127,894,730. Of these, 129 were from SOM affiliates totaling \$94,142,383, with 46 projects totaling \$9,204,293 from affiliates in the Department of Epidemiology and Public Health.

**Education.** Guided by the SOM strategic plan, EPH continued to grow the academic programs associated with the department. During FY2019, 50 students graduated from programs EPH faculty led and the department continued to lead the Epidemiology Section in the medical school curriculum and students continued to score well on the epidemiology sections of the USMLE.

**Clinical Service.** Six EPH faculty provided clinical care. Faculty members provided medical evaluations and consultations for children with possible child abuse and neglect, as well as preceptorship of medicine and pediatric residents at Sinai Hospital. In addition, five faculty lead the UMMC and Baltimore VAMC Infection Control Programs, and attend at the UMMC and/or the medicine inpatient unit at the VA.

**Community Outreach.** During FY2019, the Community Outreach Program continued to expand the department's outreach in the local the community while also sharing our knowledge and skills with national and international communities. The community outreach activities provided faculty with the opportunity to grow research collaborations, engage students in real-world public health activities, and jumpstart potential new grant collaborations. EPH faculty, students and staff continue to implement the community outreach initiatives, including community service and public health education activities during National Public Health Week.

**Administration.** During FY2019, EPH was fully functioning and running at maximum capacity. EPH faculty and staff effort reporting is balanced, employee timesheets were submitted and approved in a timely manner. The EPH social media presence continued through Facebook and Twitter. The department also continued to publish *EPH Weekly*, a digest of departmental accomplishments and events.

**Finance:** All state and revolving accounts were balanced at year-end and the year-end balance in the DRIF account was \$715,618.

**Development:** In FY2019, we received \$68,730 in new funds and gifts. Twelve new leads were identified. The annual Renee Royak-Schaler Lecture in Health Disparities was held in April 2019 with Ichiro Kawachi, MBChB, PhD, Harvard Professor, as the speaker.

## FISCAL YEAR 2019 ACCOMPLISHMENTS

### Research.

The department is the primary home to 46 faculty members in five different cost centers. EPH faculty published a total of 213 peer-reviewed publications and articles and have 93 active grants. Department faculty submitted 103 grant applications totaling \$61.8 million in total costs., EPH faculty continue to have key roles in the preparation and submission of multiple SOM grant applications with PIs outside the department including the recently funded CTSA grant with Johns Hopkins, where EPH faculty, Soren Bentzen and Kate Tracy, lead research cores.

Active extramural awards to all faculty with primary appointments in the department (N=46) totaled \$45M. (broken down by cost center \$15,249,373 to those in the primary EPH cost center (N=37); \$9,289,541 to those in centers/institutes (N=9); and \$20,500,000 went to faculty in the Cooperative Studies Coordinating Center (CSPCC) in Perry Point (N=1)). Overall, awards were up by 25% from FY2018. Dollars per faculty member remained high with an overall average of \$978,072 per faculty. Total FY2019 federal funding increased 25% over FY2018 and there was a 23% increase in NIH funding. In 2019, 87% of EPH faculty receive funding from federal sources. Finally, based on the 2018 Blue Ridge Report, Epidemiology and Public Health ranked #4 in NIH funding among like departments in schools of medicine nationwide, and ranked EPH #1 among like departments in public schools of medicine. Two faculty, Owen White and Jay Magaziner, ranked among the top 20 NIH funded faculty in schools of medicine nationally in 2018. This is an increase from 2017 when EPH was ranked 8<sup>th</sup> among like departments in schools of medicine, and 4<sup>th</sup> among like departments in public institutions. The department will strive to maintain this level of federally funded research, while at the same time maintaining excellence in education, clinical care and community service.

Program in Health Disparities and Population Health combines research, education, and service to advance health equity by addressing the critical health issues often influenced by the social determinants of health. Newly appointed in May 2019, Director Erin Hager, PhD, and Deputy Director Laundette Jones, PhD, MPH, plan to increase the Program's funding in coming years. In FY19, the program developed a research project inventory of program affiliate grants to foster collaboration and grant submissions and expanded the membership to 73 faculty affiliates, 57 from SOM. In FY19, there were 331 active grants totaling \$127,894,730. Of these, 129 were from SOM affiliates totaling \$94,142,383, with 46 projects totaling \$9,204,293 from affiliates in the Department of Epidemiology and Public Health.

### Research Honors/Awards

- Patti Gravitt, PhD, MS, Professor, Department of Epidemiology and Public Health, was appointed Senior Associate Editor at Cancer Epidemiology Biomarkers Prevention (CEBP), which recently received an updated impact factor of 5.057. For almost 30 years CEBP has been the premier AACR journal for fundamental and applied population-focused cancer research describing the burden of cancer, uncovering possible causes of cancer and its progression, and informing and evaluating strategies for cancer prevention, early detection, cancer survivorship, and closing the cancer disparities gap.
- Patti Gravitt, PhD, MS, Professor, Department of Epidemiology and Public Health, served as an invited expert on the Microbiology Devices Panel for the Medical Devices Advisory Committee to discuss and make recommendations regarding new or alternative approaches to the development and evaluation of devices detecting human papillomavirus (HPV) nucleic acid.
- Jay Magaziner, PhD, MSHyg, Professor, Department of Epidemiology and Public Health, was named to State of Maryland Governor's Commission on Aging.
- Jay Magaziner, PhD, MSHyg, Professor, Department of Epidemiology and Public Health, was elected President of the Fragility Fracture Network, a global organization dedicated to the multi-disciplinary care of fracture patients.
- Daniel Morgan, MD, Associate Professor, Department of Epidemiology and Public Health, was chosen by the American College of Physicians, to receive the Mary Betty Stevens Award for important contributions through clinical research. Dr. Morgan was presented with the award at a reception on February 1, 2019.
- Alan Rathbun, PhD, MPH, Research Associate, Department of Epidemiology and Public Health, and VA Fellow in Advanced Geriatrics, was selected for a press conference for his presentation entitled "Depression Risk Higher Among Knee OA Patients with Greater Disease Severity," at the EULAR Annual

Congress. The EULAR Annual Congress was held on June 13-16, 2018 in Amsterdam.

- Kate Tracy, PhD, Associate Professor, Department of Epidemiology and Public Health, was selected to be an American Council on Education Fellow for the coming year.

## Education.

Overall, the EPH educational programs continued to thrive in FY2019 and the graduates are strong representatives of the School of Medicine's public health and epidemiology training. Below are brief updates about each academic program.

- *Clinical Research Education and Training Program - MS in Epidemiology and Preventive Medicine, Clinical Research Track and Certificate in Clinical Research:* Under the continued leadership of Kristen Stafford, MPH, PhD, the program continues to receive institutional support from the Dean's office. This year we accepted nine MS students, including one MD/MS student from UMSOM and one VCU medical student taking a gap year. We additionally accepted four students in the Certificate program. Revenue from tuition remission increased by 55% over last year.
- *PhD and MS Programs in Epidemiology and Human Genetics:* Ann Gruber-Baldini, PhD, continued to lead Epidemiology and Human Genetics Program. FY2019 saw a 3% increase in the number of applications received when compared with FY2018 (applications were down overall for GPILS programs), and we maintained high quality in the applicant pool. Forty-four PhD students will be enrolled this fall, including eight new students. There will be two new Human Genetics students in the MS Program. Seven PhD students graduated in FY2018. Three students were funded through an F31 and one student was funded on an F30.
- *Ph.D. in Gerontology:* The dual-campus program (UMB/UMBC) continued to thrive in its 18<sup>th</sup> year under the co-leadership of SOM faculty, Denise Orwig, PhD and UMB faculty, John Schumacher, PhD. There are 47 program faculty affiliates across the UMB and UMBC campuses. Five full-time students enrolled for the fall 2018 semester bringing the total enrollment in the program to 22 students. The students were primarily funded on faculty grants or state GRAs. As of May 2019, a total of 42-students have graduated, with 2-new graduates this fiscal year. One of the graduates is currently teaching gerontology courses at UMUC while volunteering regularly at the Calvert County Office on Aging. The second is a clinical associate professor in speech language pathology at Towson University. Student accomplishments include: 10 student publications (2 first author), 8 oral presentations, 7 poster presentations, and 6 student awards. The program created and distributed their fifth annual newsletter.
- *Medical School Teaching:* Kerri Thom, MD, MS, continued to lead as the Director of the Epidemiology Section in the medical school curriculum. In that capacity, Dr. Thom coordinated the epidemiology and biostatistics curriculum, arranged and scheduled lectures/small group sessions, and is active on the Comprehensive Curriculum Committee and the Year 1/Year 2 subcommittee. Dr. Thom also served as Course Director for two clinical year electives, PREV 540 and PREV 546. Six EPH faculty members gave 15 lectures in epidemiology and biostatistics: and 17 primary/secondary faculty members served as small group facilitators for epidemiology small group sessions. Dr. Thom is a member of the Executive and Steering Committees for Curriculum Review and Enhancement with a plan to implement a new medical student curriculum in 2020.
- *Master of Public Health (MPH) Program:* The MPH Program, directed by Diane Marie St. George, PhD, received MHEC approval and enrolled its first cohort into the newly-revamped curriculum. Our first cohort included 23 students all of whom started in July 2018 as per our revised academic calendar. In the 2018-2019 year, the Program graduated 23 students and ended the spring 2019 term with 39 continuing students. Nicole Champion Dialo, MD/MPH student, was named as one of the 2018-2019 President's Fellows.
- *Preventive Medicine Residency:* Wendy Lane, MD, MPH, continued to lead the residency program in FY 19. One resident had her work accepted for publication on the American Academy of Family Physicians

website. Three residents had research posters accepted for presentation at national meetings, two at the ACPM Prevention Meeting in May, 2019 and one at the upcoming American Public Health Association Meeting in November 2019. Both residents who graduated in 2018 took the American Board of Preventive Medicine examination in the fall and passed. The program received continued accreditation by the Accreditation Council for Graduate Medical Education with no citations and commendation for our 100% 5-year board exam pass rate.

#### Academic Honors/Awards:

- Appendix C provides a detailed reporting of the faculty, staff and student academic honors/awards for FY2018.

#### **Clinical Service.**

EPH has a limited number of faculty providing clinical care services. However, during FY2019, six outstanding faculty members provided clinical care services. Wendy Lane, MD, MPH, continued to provide medical evaluations and consultations for children with possible child abuse and neglect through the hospital Child Protection Team and at the Howard County Child Advocacy Center. She ran several components of an annual full-day retreat to train pediatric interns to identify and treat children suspected of abuse and neglect. Dr. Lane served as a Core Faculty member of the CHAMP program (Child Abuse Medical Professionals), a statewide program to train and support health professionals throughout the state who provide care to children with suspected abuse and neglect. Also, she provided pediatric care at the Baltimore Child Abuse Center, an affiliate of Sinai Hospital. Anthony Harris, MD, MPH, continued as an Associate Hospital Epidemiologist. Surbhi Leekha, MBBS, MPH, continued to serve as Medical Director of the UMMC Department of Infection Prevention and Hospital Epidemiology. Daniel Morgan, MD, MS, continued to serve as the chief hospital epidemiologist for the Baltimore VA Medical Center and Mary-Claire Roghmann, MD, was an associate hospital epidemiologist for the VA Maryland Healthcare System. Additionally, Kerri Thom, MD, MS, served as Patient Safety and Quality Improvement Advisor to the University of Maryland Medical System (UMMS) and served as an Associate Hospital Epidemiologist. Drs. Leekha and Thom had clinical attending responsibilities in infectious disease or internal medicine at the UMMC. Surbhi Leekha, MBBS, MPH, served as Hospital Epidemiology at the University of Maryland Medical Center. Drs. Thom and Harris served as Associate Hospital Epidemiologists.

#### **Community Outreach.**

We are continuing to identify ways to expand our engagement with the community to share our knowledge and skills with the local, national and international communities. Some of the community service the students, staff and faculty provided during FY 2019 included:

- Assembled food baskets at the Maryland Food Bank
- Participated in health/wellness fairs
- Taught healthy nutrition to students through the UMB Kids to Farmers Market Program
- Instituted a new MPH service-learning requirement for all students in their first term. That requirement led to student involvement in several UMB Community Engagement Center efforts, such as the POP Farm community garden project, the Get Out the Vote campaign and the Monday Market. In addition, we collaborated with the College Park campus to have a student volunteer with Project HEAL which is providing cancer prevention within Baltimore African American churches. We also placed students within the B'More for Healthy Babies project to provide blood pressure screening and education in West Baltimore community sites.

#### **Administration.**

EPH administrative core is fully functioning and running at maximum capacity. A mid-level manager tendered her resignation at the end of the FY; we expect to refill a comparable position shortly. With the addition of Dr. Gravitt, the department is engaged in a greater number of international contracts; our senior grant and contracts manager, Monica Martinez CRA, is working with the PI to administer this project. The department may need additional FTE if large projects are funded.

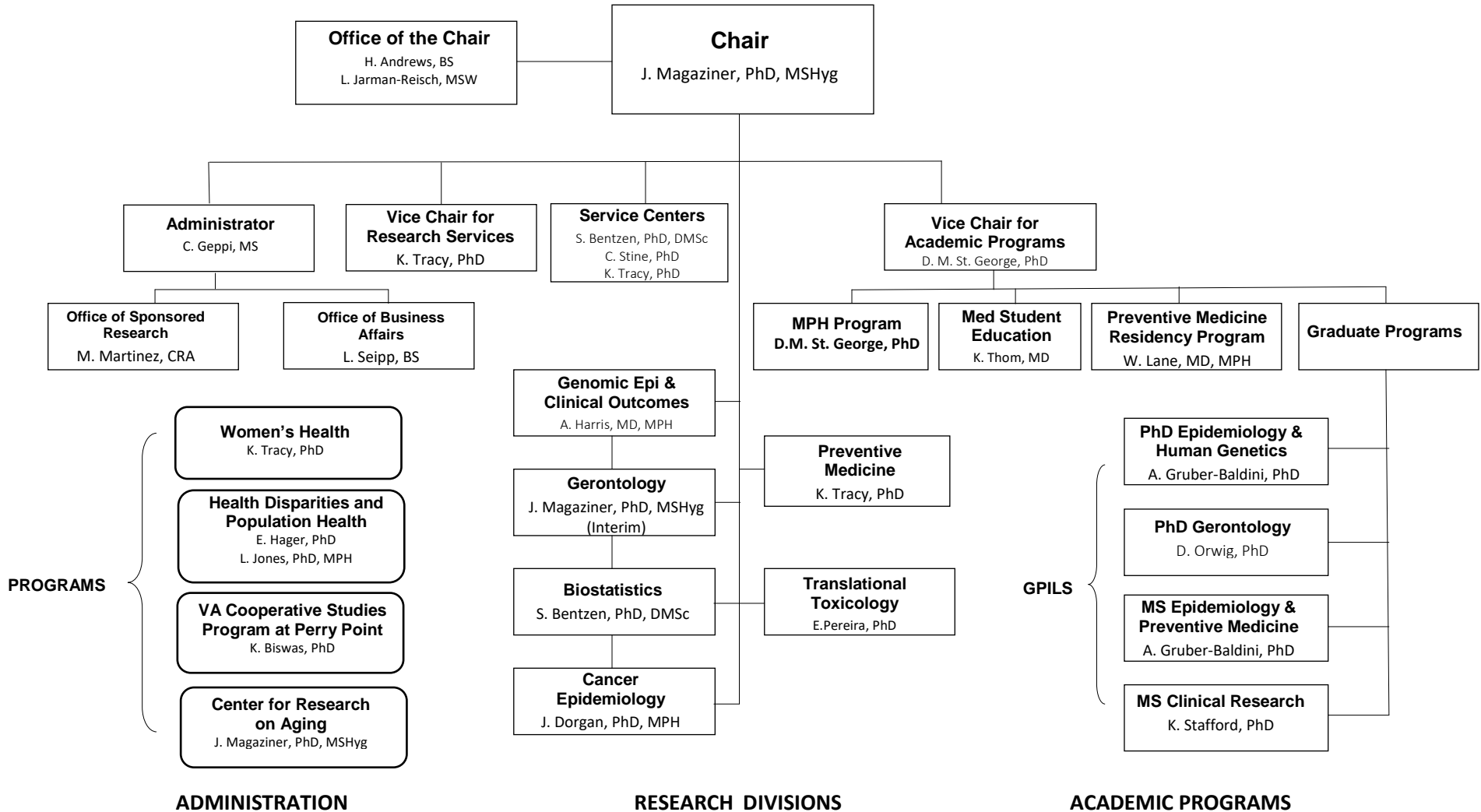
The department's PCA account is balanced and there are no outstanding effort reports for prior fiscal years. Timesheets for nearly 125 employees have been submitted and approved on a timely basis; effort reports are current. Laura Seipp is closely directing payroll activities and we are pleased to report a decrease in the number of outlier payroll actions (eg., overpay, leave payout corrections, late pays, etc.). The department's payroll associate became vacant during the reporting period; this critical position has been filled, the new hire has completed all required training, and she is already responding accurately and pleasantly to inquiries.

Finance: All state and revolving accounts balanced at year-end. Year-end balance in the DRIF account was \$715,618. Year-end balance in the IT/LAN account was \$443,824. With the exception of two modest cost centers in one account (IT/LAN) totaling ~\$50,000, funds will be used for cost share (~ \$317,000), a physician recruitment in infectious disease (\$75,000), an active recruitment of a division head (\$50,000), and information technology (IT/LAN, approximately \$40,000) contractual costs to ready several courses for online delivery, our annual contract to the Department of Medicine for IT/desktop support, and to upgrade 18 desktop computers that are more than seven years old and out of service. Finally, all fee-for-service biostatistical support is billed through iLABs; a major user of this service (the VA) is being set up in iLABs for direct billing purposes. This should eliminate many of our IPAs which are administratively burdensome, on both sides.

Development: In FY2019, 12 solicitations totaling \$477,999 were made to individuals, foundations, and corporations resulting in \$68,730 in new funds for research and scholarships, including: 1) a \$25,000 major gift to the Langenberg Endowment; 2) over \$16,000 in donor and matching gifts to the newly established Albuquerque Memorial Fund; 3) \$15,000 in disparities-related funds; and 4) a \$8,000 gift to the PMR Endowment. Twelve new leads were pursued that included a \$250,000 proposal submitted to the Robert Wood Johnson Foundation. Several individual prospects established new funds in the department or augmented existing funds and endowments. The department hosted Ichiro Kawachi, MBChB, PhD, John L. Loeb and Frances Lehman Loeb Professor of Social Epidemiology in the Department of Social and Behavioral Sciences at the Harvard T. H. Chan School of Public Health, Harvard University for the 2019 Renee Royak-Schaler Annual Lecture in Health Disparities.



## Organizational Structure for Department of Epidemiology and Public Health



## EPH Fiscal Year 2019 Publications

1. Lilly CM, Aljawadi M, Badawi O, Onukwugha E, Tom S, **Magder LS**, Harris I. Comparative Effectiveness of Proton Pump Inhibitors vs. Histamine type-2 receptors blockers for preventing Clinically Important Gastrointestinal Bleeding during Intensive Care: A population-based study. *Chest*. 2018 May 29. [Epub ahead of print].
2. Petri M, **Magder LS**. Comparison of Remission and Lupus Low Disease Activity State in Damage Prevention in a United States Systemic Lupus Erythematosus Cohort. *Arthritis Rheumatol*. 2018 May 27. [Epub ahead of print].
3. **Blanco N, O'Hara LM**, Robinson GL, Brown J, Heil E, **Brown CH**, Stump BD, Sigler BW, Belani A, Miller HL, Chiplinski AN, Perlmutter R, Wilson L, **Morgan DJ, Leekha S**. Health care worker perceptions toward computerized clinical decision support tools for *Clostridium difficile* infection reduction: A qualitative study at 2 hospitals. *Am J Infect Control*. 2018 May 23. [Epub ahead of print].
4. Chudy-Onwugaje K, Abutaleb A, **Buchwald A, Langenberg P**, Regueiro M, Schwartz DA, **Tracy JK**, Ghazi L, Patil SA, Quezada S, Russman K, Horst S, Beaulieu D, **Quinn C**, Jambaulikar G, Cross RK. Age Modifies the Association Between Depressive Symptoms and Adherence to Self-Testing With Telemedicine in Patients With Inflammatory Bowel Disease. *Inflamm Bowel Dis*. 2018 May 28. [Epub ahead of print].
5. **Jung S, Goloubeva O**, Hylton N, Klifa C, LeBlanc E, Shepherd J, Snetselaar L, Van Horn L, **Dorgan JF**. Intake of dietary carbohydrates in early adulthood and adolescence and breast density among young women. *Cancer Causes Control*. 2018 May 25. [Epub ahead of print].
6. **Albrecht JS, Barbour L, Abariga SA**, Rao V, Perfetto EM. Risk of Depression Following Traumatic Brain Injury in a Large National Sample. *J Neurotrauma*. 2018 May 29. [Epub ahead of print].
7. Lühr A, von Neubeck C, Pawelke J, Seidlitz A, Peitzsch C, **Bentzen SM**, Bortfeld T, Debus J, Deutsch E, Langendijk JA, Loeffler JS, Mohan R, Scholz M, Sørensen BS, Weber DC, Baumann M, Krause M; "Radiobiology of Proton Therapy". "Radiobiology of Proton Therapy": Results of an international expert workshop. *Radiother Oncol*. 2018 May 31. [Epub ahead of print].
8. Gasic D, Rosenschöld PMA, Vogelius IR, Maraldo MV, Aznar MC, Nysom K, Björk-Eriksson T, **Bentzen SM**, Brodin NP. Retrospective estimation of heart and lung doses in pediatric patients treated with spinal irradiation. *Radiother Oncol*. 2018 May 30. pii: S0167-8140(18)30254-8. [Epub ahead of print].
9. Bwire G, Sack DA, Almeida M, Li S, Voeglein JB, Debes AK, Kagirita A, Buyinza AW, Orach CG, **Stine OC**. Molecular characterisation of *Vibrio cholera* responsible for cholera epidemics in Uganda by PCR, MLVA and WGS. *PLoS Negl Trop Dis*. 2018 Jun 4;12(6):e0006492. [Epub ahead of print].
10. Cheng K, Metry M, Felton J, Shang AC, Drachenberg CB, Xu S, **Zhan M**, Schumacher J, Guo GL, Polli JE, Raufman JP. Diminished gallbladder filling, increased fecal bile acids, and promotion of colon epithelial cell proliferation and neoplasia in fibroblast growth factor 15-deficient mice. *Oncotarget*. 2018 May 22;9(39):25572-25585.
11. Leng Q, Lin Y, **Zhan M**, Jiang F. An integromic signature for lung cancer early detection. *Oncotarget*. 2018 May 15;9(37):24684-24692.
12. Simner PJ, Goodman KE, Carroll KC, **Harris AD**, Han JH, Tamma PD. Using Patient Risk Factors to Identify Whether Carbapenem-Resistant Enterobacteriaceae Infections Are Caused by Carbapenemase-Producing Organisms. *Open Forum Infect Dis*. 2018 May 17;5(5):ofy094.

13. Ekoru K, Young EH, Dillon DG, Gurdasani D, Stehouwer N, Faurholt-Jepsen D, Levitt NS, Crowther NJ, Nyirenda M, Njelekela MA, Ramaiya K, Nyan O, Adewole OO, Anastos K, Compostella C, Dave JA, Fourie CM, Friis H, Kruger IM, Longenecker CT, Maher DP, Mutimura E, Ndhlovu CE, Praygod G, Pefura Yone EW, Pujades-Rodriguez M, Range N, Sani MU, Sanusi M, Schutte AE, Sliwa K, Tien PC, Vorster EH, Walsh C, Gareta D, Mashili F, Sobngwi E, **Adebamowo C**, Kamali A, Seeley J, Smeeth L, Pillay D, Motala AA, Kaleebu P, Sandhu MS. HIV treatment is associated with a two-fold higher probability of raised triglycerides: Pooled Analyses in 21 023 individuals in sub-Saharan Africa. *Glob Health Epidemiol Genom.* 2018;3. Epub 2018 May 8.
14. Wickwire E, Schnyer DM, Germain A, Williams S, Lettieri C, McKeon A, Scharf S, Stocker R, **Albrecht JS**, Badjatia N, Markowitz A, Manley G. Sleep, sleep disorders, and circadian health following mild traumatic brain injury: Review and research agenda. *J Neurotrauma.* 2018 Jun 7. [Epub ahead of print].
15. Rasmussen JH, Håkansson K, Rasmussen GB, Vogelius IR, Friborg J, Fischer BM, **Bentzen SM**, Specht L. A clinical prognostic model compared to the newly adopted UICC staging in an independent validation cohort of P16 negative/positive head and neck cancer patients. *Oral Oncol.* 2018 Jun;81:52-60.
16. Wang L, Felts SJ, Van Keulen VP, Scheid AD, Block MS, Markovic SN, Pease LR, Zhang Y. Integrative genome-wide analysis of long noncoding RNAs in diverse immune cell types of melanoma patients. *Cancer Res.* 2018 Jun 12.. [Epub ahead of print].
17. Harville EW, Chen W, **Guralnik J**, Bazzano LA. Reproductive history and physical functioning in midlife: The Bogalusa Heart Study. *Maturitas.* 2018 Mar;109:26-31.
18. McGlumphy EJ, Margo JA, Haidara M, **Brown CH**, Hoover CK, Munir WM. Predictive Value of Corneal Donor Demographics on Endothelial Cell Density. *Cornea.* 2018 Jun 14. [Epub ahead of print].
19. Wang J, Zhao L, Ye Y, **Zhang Y**. Adverse event detection by integrating twitter data and VAERS. *J Biomed Semantics.* 2018 Jun 20;9(1):19.
20. Zanos P, Moaddel R, Morris PJ, Riggs LM, Highland JN, Georgiou P, **Pereira EFR**, **Albuquerque EX**, Thomas CJ, Zarate CA Jr, Gould TD. Ketamine and Ketamine Metabolite Pharmacology: Insights into Therapeutic Mechanisms. *Pharmacol Rev.* 2018 Jul;70(3):621-660.
21. Rodriguez-Hart C, Bradley C, German D, Musci R, Orazulike I, Baral S, Liu H, Crowell TA, **Charurat M**, **Nowak RG**; TRUST/RV368 Study Group. The Synergistic Impact of Sexual Stigma and Psychosocial Well-Being on HIV Testing: A Mixed-Methods Study Among Nigerian Men who have Sex with Men. *AIDS Behav.* 2018 Jun 28. [Epub ahead of print]
22. Dasari PKR, Jones JP, Casey ME, **Liang Y**, Dilsizian V, Smith MF. The Effect of Time-of-Flight and Point Spread Function Modeling on 82Rb Myocardial Perfusion Imaging of Obese Patients. *Journal of Nuclear Cardiology.* Epub. June 2018.
23. Turner BJ, Parish-Johnson JA, **Liang Y**, Jeffers T, Arismendez SV, Poursani R. Implementation of the chronic care model to reduce disparities in hypertension control: Benefits take time. *Journal of General Internal Medicine.* Epub. June 2018.
24. Burcu M, Zito JM, Safer DJ, **Magder LS**, dosReis S, Shaya FT, Rosenthal GL. Cardiovascular Events Following Treatment Initiation with Atypical Antipsychotic Medications in Publicly Insured U.S. Youth. *J Child Adolesc Psychopharmacol.* 2018 Jul 5. doi: 10.1089/cap.2017.0121. [Epub ahead of print].
25. Bowers RM, Kyrpides NC, Stepanauskas R, Harmon-Smith M, Doud D, Reddy TBK, Schulz F, Jarett J, Rivers AR, Eloie-Fadrosch EA, Tringe SG, Ivanova NN, Copeland A, Clum A, Becraft ED, Malmstrom RR,

- Birren B, Podar M, Bork P, Weinstock GM, Garrity GM, Dodsworth JA, Yooseph S, Sutton G, Glöckner FO, Gilbert JA, Nelson WC, Hallam SJ, Jungbluth SP, Ettema TJG, Tighe S, Konstantinidis KT, Liu WT, Baker BJ, Rattei T, Eisen JA, Hedlund B, McMahon KD, Fierer N, Knight R, Finn R, Cochrane G, Karsch-Mizrachi I, Tyson GW, Rinke C; Genome Standards Consortium, Lapidus A, Meyer F, Yilmaz P, Parks DH, Eren AM, **Schriml L**, Banfield JF, Hugenholtz P, Woyke T. Corrigendum: Minimum information about a single amplified genome (MISAG) and a metagenome-assembled genome (MIMAG) of bacteria and archaea. *Nat Biotechnol.* 2018 Jul 6;36(7):660.
26. Heil EL, Nicolau DP, Farkas A, Roberts JA, **Thom KA**. Pharmacodynamic target attainment for cefepime, meropenem and piperacillin/tazobactam using a pharmacokinetic/pharmacodynamic-based dosing calculator in critically ill patients. *Antimicrob Agents Chemother.* 2018 Jul 2. pii: AAC.01008-18. doi: 10.1128/AAC.01008-18. [Epub ahead of print]
27. Hardick J, Crowell TA, Lombardi K, Akintunde A, Odeyemi S, Ivo A, Eluwa G, Njab J, Baral SD, **Nowak RG**, Quinn TC, Barbian K, Anzick S, Adebajo S, Charurat ME, Ake J, Gaydos CA; TRUST/RV368 Study Group. Molecular screening for *Neisseria gonorrhoeae* antimicrobial resistance markers in Nigerian men who have sex with men and transgender women. *Int J STD AIDS.* 2018 Jan 1:956462418780050. doi: 10.1177/0956462418780050. [Epub ahead of print]
28. Bwire G, Sack DA, Almeida M, Li S, Voeglein JB, Debes AK, Kagirita A, Buyinza AW, Orach CG, **Stine OC**. Molecular characterization of *Vibrio cholerae* responsible for cholera epidemics in Uganda by PCR, MLVA and WGS. *PLoS Negl Trop Dis.* 2018 Jun 4;12(6):e0006492.
29. **Stafford KA, Magder LS, Hungerford LL, Guralnik JM, El-Kamary SS, Baumgarten M**, Redfield RR. Immunologic response to antiretroviral therapy by age among treatment-naive patients in Sub-Saharan Africa. *AIDS.* 2018 Jan 2;32(1):25-34.
30. Auta A, Hadi MA, Oga E, Adewuyi EO, Abdu-Aguye SN, Adeloye D, Strickland-Hodge B, **Morgan DJ**. Global access to antibiotics without prescription in community pharmacies: a systematic review and meta-analysis. *J Infect.* 2018 Jul 5. pii: S0163-4453(18)30212-3. doi: 10.1016/j.jinf.2018.07.001. [Epub ahead of print]
31. Verceles AC, Wells CL, **Sorkin JD, Terrin ML**, Beans J, Jenkins T, **Goldberg AP**. A multimodal rehabilitation program for patients with ICU acquired weakness improves ventilator weaning and discharge home. *J Crit Care.* 2018 Jul 11;47:204-210.
32. George CM, Hasan K, Monira S, Rahman Z, Saif-Ur-Rahman KM, Rashid MU, Zohura F, Parvin T, Islam Bhuyian MS, Mahmud MT, Li S, Perin J, Morgan C, Mustafiz M, Sack RB, Sack DA, **Stine OC**, Alam M. A prospective cohort study comparing household contact and water *Vibrio cholerae* isolates in households of cholera patients in rural Bangladesh. *PLoS Negl Trop Dis.* 2018 Jul 27;12(7):e0006641.
33. Santaus TM, Li S, Ladd P, Harvey A, Cole S, **Stine OC**, Geddes CD. Rapid sample preparation with Lyse-It® for *Listeria monocytogenes* and *Vibrio cholerae*. *PLoS One.* 2018 Jul 25;13(7):e0201070.
34. Jackson SS, **Thom KA, Magder LS, Stafford KA**, Johnson JK, Miller LG, Calfee DP, Harris AD; CDC Prevention Epicenters Program. Patient contact is the main risk factor for vancomycin-resistant *Enterococcus* contamination of healthcare workers' gloves and gowns in the intensive care unit. *Infect Control Hosp Epidemiol.* 2018 Jul 27:1-5. doi: 10.1017/ice.2018.160. [Epub ahead of print].
35. **Albrecht JS**, Rao V, Perfetto EM, Daniel Mullins C. Safety of Antidepressant Classes Used Following Traumatic Brain Injury Among Medicare Beneficiaries: A Retrospective Cohort Study. *Drugs Aging.* 2018 Jul 26. doi: 10.1007/s40266-018-0570-2. [Epub ahead of print]

36. Kenyon CR, Buyze J, Klebanoff M, **Brotman RM**. Association between bacterial vaginosis and partner concurrency: a longitudinal study. *Sex Transm Infect*. 2018 Feb;94(1):75-77.
37. Muralidharan A, Niv N, **Brown CH**, Olmos-Ochoa TT, Fang LJ, Cohen AN, Kreyenbuhl J, Oberman RS, Goldberg RW, Young AS. Impact of Online Weight Management With Peer Coaching on Physical Activity Levels of Adults With Serious Mental Illness. *Psychiatr Serv*. 2018 Jul 25;appips201700391. doi: 10.1176/appi.ps.201700391. [Epub ahead of print].
38. Mindikoglu AL, Opekun AR, Putluri N, Devaraj S, Sheikh-Hamad D, Vierling JM, Goss JA, Rana A, Sood GK, Jalal PK, Inker LA, Mohny RP, Tighiouart H, Christenson RH, Dowling TC, Weir MR, Seliger SL, Hutson WR, Howell CD, Raufman JP, **Magder LS**, Coarfa C. Unique metabolomic signature associated with hepatorenal dysfunction and mortality in cirrhosis. *Transl Res*. 2018 May;195:25-47.
39. Georgiou P, Zanos P, Bhat S, **Tracy JK, Merchenthaler IJ**, McCarthy MM, Gould TD. Dopamine and Stress System Modulation of Sex Differences in Decision Making. *Neuropsychopharmacology*. 2018 Jan;43(2):313-324.
40. Georgiou P, Zanos P, Bhat S, **Tracy JK, Merchenthaler IJ**, McCarthy MM, Gould TD. Dopamine and Stress System Modulation of Sex Differences in Decision Making. *Neuropsychopharmacology*. 2018 Jan;43(2):313-324.
41. **Orwig D, Hochberg MC, Gruber-Baldini AL**, Resnick B, Miller RR, Hicks GE, Cappola AR, **Shardell M**, Sterling R, **Hebel JR**, Johnson R, **Magaziner J**. Examining Differences in Recovery Outcomes between Male and Female Hip Fracture Patients: Design and Baseline Results of a Prospective Cohort Study from the Baltimore Hip Studies. *J Frailty Aging*. 2018;7(3):162-169.
42. Stenholm S, **Ferrucci L**, Vahtera J, Hoogendijk EO, Huisman M, Pentti J, Lindbohm JV, Bandinelli S, **Guralnik JM**, Kivimäki M. Natural Course of Frailty Components in People Who Develop Frailty Syndrome: Evidence From Two Cohort Studies. *J Gerontol A Biol Sci Med Sci*. 2018 Aug 1. [Epub ahead of print].
43. Scilla KA, Zandberg DP, **Bentzen SM**, Mainor C, Heath J, Ioffe OB, Cellini AL, Edelman MJ, Riedel DJ, Feliciano JL. Case-control study of PD-1, PD-L1 and B7-H3 expression in lung cancer patients with and without human immunodeficiency virus (HIV) infection. *Lung Cancer*. 2018 Sep;123:87-90.
44. Lin Y, Leng Q, **Zhan M**, Jiang F. A Plasma Long Noncoding RNA Signature for Early Detection of Lung Cancer. *Transl Oncol*. 2018 Aug 8;11(5):1225-1231. [Epub ahead of print].
45. Leng Q, Tsou JH, **Zhan M**, Jiang F. Fucosylation genes as circulating biomarkers for lung cancer. *J Cancer Res Clin Oncol*. 2018 Aug 12. [Epub ahead of print].
46. **Adebamowo SN**, Famooto A, Dareng EO, Olawande O, Olaniyan O, Offiong R, **Adebamowo CA**. Clearance of Type-Specific, Low-Risk, and High-Risk Cervical Human Papillomavirus Infections in HIV-Negative and HIV-Positive Women. *J Glob Oncol*. 2018 Jul;(4):1-12.
47. Reich CM, Hack SM, Klingaman EA, **Brown CH**, Fang LJ, Dixon LB, Jahn DR, Kreyenbuhl JA. Consumer satisfaction with antipsychotic medication-monitoring appointments: the role of consumer-prescriber communication patterns. *Int J Psychiatry Clin Pract*. 2018 Jun;22(2):89-94.
48. Michos ED, Mitchell CM, Miller ER 3rd, Sternberg AL, Juraschek SP, Schrack JA, Szanton SL, Walston JD, Kalyani RR, Plante TB, Christenson RH, Shade D, Tonascia J, Roth DL, Appel LJ; STURDY Collaborative Research Group, Appel LJ, Cronin N, Juraschek SP, McClure S, Mitchell CM, Plante TB, Kalyani RR, Roth DL, Schrack JA, Szanton SL, Urbanek J, Walston J, Baksh S, Blackford AL, Chattopadhyay S, Dodge J, Ewing C, Jackson R, Lears A, Meinert C, Shade D, Smith M, Sternberg AL,

- Tonascia J, Van Natta ML, Wagoner A, Michos ED, Bowers P, Coresh J, Crunkleton T, Dick B, Evans R, Godwin M, Hammann L, Hawks D, Horning K, Minotti M, Myers M, Raley L, Reid C, Spikes A, Stouffer R, Weicht K, Miller ER 3rd, Carey B, Charleston J, DeRoche-Brown N, Gayles D, Glenn-Smith I, Johnson D, Johnson M, Keyes E, McArthur K, Santiago D, Sapun C, Sneed V, Thomas L, Christenson RH, Duh SH, Rebuck H, Rosen C, Cook T, Duncan P, Hansen K, Kenny A, Shapses S, Hannah J, Romashkan S, Davis CD, **Guralnik JM**, Gallagher JC. Rationale and design of the Study to Understand Fall Reduction and vitamin D in You (STURDY): A randomized clinical trial of vitamin D supplement doses for the prevention of falls in older adults. *Contemp Clin Trials*. 2018 Aug 20. [Epub ahead of print].
49. Ng X, dosReis S, Beardsley R, **Magder L**, Mullins CD, Petri M. Understanding systemic lupus erythematosus patients' desired outcomes and their perceptions of the risks and benefits of using corticosteroids. *Lupus*. 2018 Mar;27(3):475-483.
50. Turner BJ, **Liang Y**, Rodriguez N, Bobadilla R, Simmonds MJ, Yin Z. Randomized Trial of a Low-Literacy Chronic Pain Self-Management Program: Analysis of Secondary Pain and Psychological Outcome Measures. *J Pain*. 2018 Aug 24. [Epub ahead of print].
51. **Jumare J, El-Kamary SS, Magder L, Hungerford L**, Ndembi N, Aliyu A, **Dakum P**, Umlauf A, Cherner M, **Abimiku A, Charurat M**, Blattner WA, Royal W 3rd. Plasma HIV RNA level is associated with neurocognitive function among HIV-1-infected patients in Nigeria. *J Neurovirol*. 2018 Aug 30. [Epub ahead of print].
52. Erickson P, Gardner LD, Loffredo CA, **St George DM**, Bowman ED, Deepak J, Mitchell KA, Meaney CL, **Langenberg P**, Bernat DH, **Amr S**, Ryan BM. Racial and Ethnic Differences in the Relationship Between Aspirin Use and Non-Small Cell Lung Cancer Risk and Survival. *Cancer Epidemiol Biomarkers Prev*. 2018 Aug 31. pii: cebp.0366.2018. [Epub ahead of print].
53. McGlumphy EJ, Margo JA, Haidara M, **Brown CH**, Hoover CK, Munir WM. Predictive Value of Corneal Donor Demographics on Endothelial Cell Density. *Cornea*. 2018 Sep;37(9):1159-1162.
54. Kenyon C, Buyze J, Klebanoff M, **Brotman RM**. The role of sexual networks in studies of how BV and STIs increase the risk of subsequent reinfection. *Epidemiol Infect*. 2018 Sep 5:1-7. [Epub ahead of print].
55. **Nowak RG, Bentzen SM**, Ravel J, Crowell T, Dauda W, Ma B, Liu H, Blattner WA, Baral SD, **Charurat ME**. Anal microbial patterns and oncogenic HPV in a pilot study of Nigerian men who have sex with men at risk for or living with HIV. *AIDS Res Hum Retroviruses*. 2018 Sep 14. [Epub ahead of print].
56. Geller RJ, **Brotman RM**, O'Brien KM, Fine DM, Zota AR. Phthalate Exposure and Odds of Bacterial Vaginosis Among U.S. Reproductive-Aged Women, NHANES 2001-2004. *Reprod Toxicol*. 2018 Sep 9. [Epub ahead of print].
57. Friedland AE, Brown S, Glick DR, Lusby MC, Lemkin D, **Leekha S**. Use of Computerized Clinical Decision Support for Diagnostic Stewardship in *Clostridioides difficile* testing: an Academic Hospital Quasi-Experimental Study. *J Gen Intern Med*. 2018 Sep 14. [Epub ahead of print].
58. Hortobagyi GN, Pyle D, Cazap EL, El Saghir NS, Shulman LN, Lyman GH, Schnipper LE, **Adebamowo CA**, Gandara DR, Vose J, Wong SL, Yu P. American Society of Clinical Oncology's Global Oncology Leadership Task Force: Findings and Actions. *J Glob Oncol*. 2018 Sep;(4):1-8.
59. Modiri A, Stick LB, Rice SR, Rechner LA, Vogelius IR, **Bentzen SM**, Sawant A. Individualized estimates of overall survival in radiation therapy plan optimization - A concept study. *Med Phys*. 2018 Sep 23. [Epub ahead of print].

60. Galvagno SM Jr, Massey M, Bouzat P, **Vesselinov R**, Levy MJ, Millin MG, Stein DM, Scalea TM, **Hirshon JM**. Correlation Between the Revised Trauma Score and Injury Severity Score: Implications for Prehospital Trauma Triage. *Prehosp Emerg Care*. 2018 Aug 23;1-8. [Epub ahead of print].
61. Tucker WJ, Beaudry RI, **Liang Y**, Clark AM, Tomczak CR, Nelson MD, Ellingsen O, Haykowsky MJ. Meta-analysis of Exercise Training on Left Ventricular Ejection Fraction in Heart Failure with Reduced Ejection Fraction: A 10-year Update. *Prog Cardiovasc Dis*. 2018 Sep 15. [Epub ahead of print].
62. Dasari PKR, Jones JP, Casey ME, **Liang Y**, Dilsizian V, Smith MF. The effect of time-of-flight and point spread function modeling on (82)Rb myocardial perfusion imaging of obese patients. *J Nucl Cardiol*. 2018 Oct;25(5):1521-1545.
63. Lehmann GM, **LaKind JS**, Davis MH, Hines EP, Marchitti SA, Alcalá C, Lorber M. Environmental Chemicals in Breast Milk and Formula: Exposure and Risk Assessment Implications. *Environ Health Perspect*. 2018 Sep;126(9):96001.
64. **Jackson SS, Harris AD, Magder LS, Stafford KA**, Johnson JK, Miller LG, Calfee DP, **Thom KA**; CDC Prevention Epicenters Program. Bacterial burden is associated with increased transmission to health care workers from patients colonized with vancomycin-resistant *Enterococcus*. *Am J Infect Control*. 2018 Sep 26 [Epub ahead of print].
65. **LaKind JS**, Lehmann GM, Davis MH, Hines EP, Marchitti SA, Alcalá C, Lorber M. Infant Dietary Exposures to Environmental Chemicals and Infant/Child Health: A Critical Assessment of the Literature. *Environ Health Perspect*. 2018 Sep;126(9):96002.
66. Callahan KE, Lovato L, Miller ME, Marsh AP, Fielding RA, Gill TM, Groessl EJ, **Guralnik J**, King AC, Kritchevsky SB, McDermott MM, Manini T, Newman AB, Rejeski WJ. Self-Reported Physical Function As a Predictor of Hospitalization in the Lifestyle Interventions and Independence for Elders Study. *J Am Geriatr Soc*. 2018 Oct 3. [Epub ahead of print].
67. Hernandez J, Gelfond J, Goros M, Liss M, **Liang Y**, Ankerst DP, Thompson IM, Leach RJ. The effect of 3-month finasteride challenge on biomarkers for predicting cancer outcome on biopsy: Results of a randomized trial. *PLoS One* Oct 2018; 13(10): e0204823.
68. **Blanco N**, Johnson JK, **Sorkin JD**, Lydecker AD, **Levy L**, Mody L, **Roghamm MC**. Transmission of resistant Gram-negative bacteria to healthcare personnel gowns and gloves during care of residents in community-based nursing facilities. *Infect Control Hosp Epidemiol*. 2018 Oct 8:1-6. [Epub ahead of print].
69. Werzen A, **Thom KA**, Robinson GL, Li S, Rock C, Herwaldt LA, Diekema DJ, Reisinger HS, Perencevich EN. Comparing brief, covert, directly observed hand hygiene compliance monitoring to standard methods: A multicenter cohort study. *Am J Infect Control*. 2018 Oct 9. [Epub ahead of print].
70. Barry LC, Hatchman L, Fan Z, **Guralnik JM**, Gao RX, Kuchel GA. Reply to: Hands-free but Nonwearable Technology Needed for Outpatient Clinical Gait-speed Assessment. *J Am Geriatr Soc*. 2018 Oct 9. [Epub ahead of print].
71. **Quinn CC**, Swasey KK, Torain JM, **Shardell MD, Terrin ML**, Barr EA, **Gruber-Baldini AL**. An mHealth Diabetes Intervention for Glucose Control: Health Care Utilization Analysis. *JMIR Mhealth Uhealth*. 2018 Oct 15;6(10):e10776.
72. **Albrecht JS**, Hanna M, Kim D, Perfetto EM. Increased Health Care Utilization in Dementia Subtypes Before Diagnosis. *Alzheimer Dis Assoc Disord*. 2018 Oct 5. doi: 10.1097/WAD.000000000000277. [Epub ahead of print].

73. Morgan SC, Hoffman K, Loblaw DA, Buyyounouski MK, Patton C, Barocas D, **Bentzen S**, Chang M, Efstathiou J, Greany P, Halvorsen P, Koontz BF, Lawton C, Leyrer CM, Lin D, Ray M, Sandler H. Hypofractionated Radiation Therapy for Localized Prostate Cancer: An ASTRO, ASCO, and AUA Evidence-Based Guideline. *J Urol*. 2018 Oct 9. pii: S0022-5347(18)43963-8. [Epub ahead of print].
74. Morgan SC, Hoffman K, Loblaw DA, Buyyounouski MK, Patton C, Barocas D, **Bentzen S**, Chang M, Efstathiou J, Greany P, Halvorsen P, Koontz BF, Lawton C, Leyrer CM, Lin D, Ray M, Sandler H. Hypofractionated Radiation Therapy for Localized Prostate Cancer: An ASTRO, ASCO, and AUA Evidence-Based Guideline. *J Clin Oncol*. 2018 Oct 11:JCO1801097. [Epub ahead of print].
75. Morgan SC, Hoffman K, Loblaw DA, Buyyounouski MK, Patton C, Barocas D, **Bentzen S**, Chang M, Efstathiou J, Greany P, Halvorsen P, Koontz BF, Lawton C, Leyrer CM, Lin D, Ray M, Sandler H. Hypofractionated Radiation Therapy for Localized Prostate Cancer: Executive Summary of an ASTRO, ASCO, and AUA Evidence-Based Guideline. *Pract Radiat Oncol*. 2018 Oct 11. pii: S1879-8500(18)30247-9. doi: 10.1016/j.prro.2018.08.002. [Epub ahead of print].
76. Klebanoff MA, **Brotman RM**. Treatment of bacterial vaginosis to prevent preterm birth. *Lancet*. 2018 Oct 12. pii: S0140-6736(18)32115-9. [Epub ahead of print].
77. Evans SR, Follmann D, Liu Y, Holland T, Doernberg SB, Rouphael N, Hamasaki T, Jiang Y, Lok JJ, Tran TTT, **Harris AD**, Fowler VG Jr, Boucher H, Kreiswirth BN, Bonomo RA, van Duin D, Paterson DL, Chambers H. Sequential Multiple Assignment Randomized Trials for COMparing Personalized Antibiotic StrategieS (SMART-COMPASS). *Clin Infect Dis*. 2018 Oct 23. [Epub ahead of print].
78. Jackson SS, Lydecker AD, **Magder LS**, **Roghamm MC**. The Development and Validation of a Clinical Prediction Rule to Predict Transmission of Methicillin-Resistant Staphylococcus aureus in Nursing Homes. *Am J Epidemiol*. 2018 Oct 22. [Epub ahead of print].
79. Jacinto AA, Batalha Filho ES, Viana LS, De Marchi P, Capuzzo RC, Gama RR, Boldrini Junior D, Santos CR, Pinto GDJ, Dias JM, Canton HP, Carvalho R, Radicchi LA, **Bentzen S**, Zubizarreta E, Carvalho AL. Feasibility of concomitant cisplatin with hypofractionated radiotherapy for locally advanced head and neck squamous cell carcinoma. *BMC Cancer*. 2018 Oct 23;18(1):1026.
80. **Brotman RM**, **Shardell MD**, Gajer P, Fadrosch D, Chang K, Silver MI, Viscidi RP, Burke AE, Ravel J, Gravitt PE. Association between the vaginal microbiota, menopause status, and signs of vulvovaginal atrophy. *Menopause*. 2018 Nov;25(11):1321-1330.
81. Muralidharan A, **Brown CH**, E Peer J, A Klingaman E, M Hack S, Li L, Walsh MB, Goldberg RW. Living Well: An Intervention to Improve Medical Illness Self-Management Among Individuals With Serious Mental Illness. *Psychiatr Serv*. 2018 Oct 24:appips201800162. [Epub ahead of print].
82. **Albrecht JS**, Hanna M, Kim D, Perfetto EM. Predicting Diagnosis of Alzheimer's Disease and Related Dementias Using Administrative Claims. *J Manag Care Spec Pharm*. 2018 Nov;24(11):1138-1145.
83. **Levy L**, **Tracy JK**. Gambling Disorder in Veterans: A Review of the Literature and Implications for Future Research. *J Gambli Stud*. 2018 Dec;34(4):1205-1239.
84. Swanberg JE, Vanderpool, R, Rosenblatt P, Nichols, H, **Tracy, JK**. Working Poor and Working Non-Poor Cancer Survivors: Work-related and Employment Disparities. *Cancer Reports*. 2018 Sep. [Epub ahead of print].
85. Clouser, JM, Flunker, J, Swanberg, JE, Betz, G, Baidwan, S, **Tracy, JK**. Occupational exposures and associated risk factors among U.S. casino workers: a narrative review. *AIMS Public*, 2018 Jan; 5(4):



352–367.

86. Pettigrew MM, Gent JF, Kong Y, Halpin AL, **Pineles L, Harris AD, Johnson JK**. Gastrointestinal microbiota disruption and risk of colonization with carbapenem-resistant *Pseudomonas aeruginosa* in ICU patients. *Clin Infect Dis*. 2018 Nov 1. [Epub ahead of print].
87. Hoffman SB, Cheng YJ, **Magder LS**, Shet N, Viscardi RM. Cerebral autoregulation in premature infants during the first 96 hours of life and relationship to adverse outcomes. *Arch Dis Child Fetal Neonatal Ed*. 2018 Nov 1. [Epub ahead of print].
88. Cole JW, Xu H, Ryan K, Jaworek T, Dueker N, McArdle P, Gaynor B, Cheng YC, O'Connell J, Bevan S, Malik R, Ahmed NU, Amouyel P, Anjum S, Bis JC, Crosslin D, Danesh J, Engelter ST, Fornage M, Frossard P, Gieger C, Giese AK, Grond-Ginsbach C, Ho WK, Holliday E, Hopewell J, Hussain M, Iqbal W, Jabeen S, Jannes J, Kamal A, Kamatani Y, Kanse S, Kloss M, Lathrop M, Leys D, Lindgren A, Longstreth WT Jr, Mahmood K, Meisinger C, Metso TM, Mosley T Jr, Müller-Nurasyid M, Norrving B, Parati E, Peters A, Pezzini A, Quereshi I, Rasheed A, Rauf A, Salam T, Shen J, Słowik A, Stanne T, Strauch K, Tatlisumak T, Thijs VN, Tiedt S, Traylor M, Waldenberger M, Walters M, Zhao W, Boncoraglio G, Debette S, Jern C, Levi C, Markus H, Meschia J, Rolfs A, Rothwell P, Saleheen D, Seshadri S, Sharma P, Sudlow C, Worrall B; METASTROKE Consortium of the ISGC; WTCCC-2 Consortium, **Stine OC**, Kittner SJ, Mitchell BD. Genetics of the thrombomodulin-endothelial cell protein C receptor system and the risk of early-onset ischemic stroke. *PLoS One*. 2018 Nov 1;13(11):e0206554.
89. Chowdhury G, **Stine OC**, Rajendran K, Mukhopadhyay AK, Okamoto K, Ramamurthy T. Detection of Uncommon Enteric Bacterial Pathogens from Acute Diarrheal Specimens using SYBR-Green Real Time PCR. *Jpn J Infect Dis*. 2018 Oct 31. [Epub ahead of print]
90. McDiarmid MA, Cloeren M, Gaitens JM, Hines S, Streeten E, Breyer RJ 3rd, **Brown CH**, Condon M, Roth T, Oliver M, Brown L, Dux M, Lewin-Smith MR, Strathmann F, Velez-Quinones MA, Gucer P. Surveillance results and bone effects in the Gulf War depleted uranium-exposed cohort. *J Toxicol Environ Health A*. 2018 Oct 29:1-15. [Epub ahead of print].
91. Hoffman SB, Cheng YJ, **Magder LS**, Shet N, Viscardi RM. Cerebral autoregulation in premature infants during the first 96 hours of life and relationship to adverse outcomes. *Arch Dis Child Fetal Neonatal Ed*. 2018 Nov 1. pii: fetalneonatal-2018-315725. [Epub ahead of print].
92. Abraham DS, Barr E, Ostir GV, Hebel JR, **Golden J, Gruber-Baldini AL, Guralnik JM, Hochberg MC, Orwig DL**, Resnick B, **Magaziner JS**. Residual Disability, Mortality, and Nursing Home Placement after Hip Fracture over Two Decades. *Arch Phys Med Rehabil*. 2018 Nov 1. [Epub ahead of print].
93. Cross RK, **Langenberg P**, Regueiro M, Schwartz DA, **Tracy JK**, Collins JF, Katz J, Ghazi L, Patil SA, Quezada SM, Beaulieu D, Horst SN, Russman K, Riaz M, Jambaulikar G, Sivasailam B, **Quinn CC**. A Randomized Controlled Trial of TELEmedicine for Patients with Inflammatory Bowel Disease (TELE-IBD). *Am J Gastroenterol*. 2018 Nov 8. [Epub ahead of print].
94. Giglio M, Tauber R, Nadendla S, Munro J, Olley D, Ball S, Mitraka E, **Schriml LM**, Gaudet P, Hobbs ET, Erill I, Siegele DA, Hu JC, Mungall C, Chibucos MC. ECO, the Evidence & Conclusion Ontology: community standard for evidence information. *Nucleic Acids Res*. 2018 Nov 8. [Epub ahead of print].
95. **Schriml LM**, Mitraka E, Munro J, Tauber B, Schor M, Nickle L, Felix V, Jeng L, Bearer C, Lichenstein R, Bisordi K, Champion N, Hyman B, Kurland D, Oates CP, Kibbey S, Sreekumar P, Le C, Giglio M, Greene C. Human Disease Ontology 2018 update: classification, content and workflow expansion. *Nucleic Acids Res*. 2018 Nov 8. [Epub ahead of print].

96. Zandberg DP, Cullen K, **Bentzen SM, Goloubeva OG**. Definitive radiation with concurrent cetuximab vs. radiation with or without concurrent cytotoxic chemotherapy in older patients with squamous cell carcinoma of the head and neck: Analysis of the SEER-medicare linked database. *Oral Oncol*. 2018 Nov;86:132-140.
97. Leng Q, Tsou JH, **Zhan M**, Jiang F. Fucosylation genes as circulating biomarkers for lung cancer. *J Cancer Res Clin Oncol*. 2018 Nov;144(11):2109-2115.
98. Zandberg DP, Cullen K, **Bentzen SM, Goloubeva OG**. Definitive radiation with concurrent cetuximab vs. radiation with or without concurrent cytotoxic chemotherapy in older patients with squamous cell carcinoma of the head and neck: Analysis of the SEER-medicare linked database. *Oral Oncol*. 2018 Nov;86:132-140.
99. Leng Q, Tsou JH, **Zhan M**, Jiang F. Fucosylation genes as circulating biomarkers for lung cancer. *J Cancer Res Clin Oncol*. 2018 Nov;144(11):2109-2115.
100. **Jumare J, El-Kamary SS, Magder L, Hungerford L**, Umlauf A, Franklin D, Ghatte M, **Abimiku A, Charurat M**, Letendre S, Ellis RJ, Mehendale S, Blattner WA, Royal W 3rd, Marcotte TD, Heaton RK, Grant I, McCutchan JA. Body Mass Index and Cognitive Function among HIV-1 Infected Individuals in China, India and Nigeria. *J Acquir Immune Defic Syndr*. 2018 Nov 5. [Epub ahead of print]
101. Cádiz L, Torres A, Valdés R, Vera G, Gutiérrez D, Levine MM, Montero DA, O'Ryan M, Rasko DA, **Stine OC**, Vidal R, Del Canto F. Coli Surface Antigen 26 Acts as an Adherence Determinant of Enterotoxigenic Escherichia coli and Is Cross-Recognized by Anti-CS20 Antibodies. *Front Microbiol*. 2018 Oct 16;9:2463.
102. Bajunirwe F, Maling S, Adami HO, Ajayi IO, Volmink J, **Adebamowo C**, Laurence C, Reid T, Nankya-Mutyoba J, Chiwanga FS, Dalal S, Njelekela M, Guwatudde D, Holmes MD. Burden of depressive symptoms and non-alcohol substance abuse; and their association with alcohol use and partner violence: a cross-sectional study in four sub-Saharan Africa countries. *Glob Ment Health (Camb)*. 2018 Oct 2;5:e31.
103. Dent E, Morley JE, Cruz-Jentoft AJ, Arai H, Kritchevsky SB, **Guralnik J**, Bauer JM, Pahor M, Clark BC, Cesari M, Ruiz J, Sieber CC, Aubertin-Leheudre M, Waters DL, Visvanathan R, Landi F, Villareal DT, Fielding R, Won CW, Theou O, Martin FC, Dong B, Woo J, Flicker L, **Ferrucci L**, Merchant RA, Cao L, Cederholm T, Ribeiro SML, Rodríguez-Mañas L, Anker SD, Lundy J, Gutiérrez Robledo LM, Bautmans I, Aprahamian I, Schols JMGA, Izquierdo M, Vellas B. International Clinical Practice Guidelines for Sarcopenia (ICFSR): Screening, Diagnosis and Management. *J Nutr Health Aging*. 2018;22(10):1148-1161.
104. Aloia J, Mikhail M, Fazzari M, Islam S, Ragolia L, **Guralnik J**. Physical Performance and Vitamin D in Elderly Black Women - The PODA Randomized Clinical Trial. *J Clin Endocrinol Metab*. 2018 Nov 28. doi: 10.1210/jc.2018-01418. [Epub ahead of print].
105. Kong FS, Moiseenko V, Zhao J, Milano MT, Li L, Rimner A, Das S, Li XA, Miften M, Liao Z, Martel M, **Bentzen SM**, Jackson A, Grimm J, Marks LB, Yorke E. Organs at Risk Considerations for Thoracic Stereotactic Body Radiation Therapy: What Is Safe for Lung Parenchyma? *Int J Radiat Oncol Biol Phys*. 2018 Nov 26. [Epub ahead of print].
106. King F, Klonoff DC, Kerr D, Hu J, Lyles C, **Quinn C**, Adi S, Chen K, Hood K, Salber P, de Clercq C, Hu J, Gabbay R. Digital Diabetes Congress 2018. *J Diabetes Sci Technol*. 2018 Nov;12(6):1231-1238.

107. **Thom KA**, Tamma PD, **Harris AD**, Dzintars K, **Morgan DJ**, Li S, Pineles L, Srinivasan A, Avdic E, Cosgrove SE. Impact of a Prescriber-driven Antibiotic Time-out on Antibiotic Use in Hospitalized Patients. *Clin Infect Dis*. 2018 Dec 4. [Epub ahead of print].
108. **Morgan DJ**, Dhruva SS, Coon ER, Wright SM, Korenstein D. 2018 Update on Medical Overuse. *JAMA Intern Med*. 2018 Dec 3. [Epub ahead of print].
109. Dareng EO, Olaniyan Y, Odutola MK, **Adebamowo SN**, Famooto A, Offiong R, Obende K, Adewole SA, Achara P, **Dakum PS**, **Adebamowo CA**. Secular trend in interobserver agreement of VIA diagnosis for cervical cancer screening in Nigeria. *PLoS One*. 2018 Dec 6;13(12):e0208531.
110. **Albrecht JS**, Wickwire EM, Vadlamani A, Scharf SM, Tom SE. Trends in Insomnia Diagnosis and Treatment Among Medicare Beneficiaries, 2006-2013. *Am J Geriatr Psychiatry*. 2018 Nov 2. [Epub ahead of print].
111. Owolabi MO, Akpa OM, Made F, **Adebamowo SN**, Ojo A, Adu D, Motala AA, Mayosi BM, Ovbiagele B, **Adebamowo C**, Tayo B, Rotimi C, Akinyemi R, Gebregziabher M, Sarfo F, Wahab KW, Parekh RS, Engel ME, Chisala C, Peprah E, Mensah G, Wiley K, Troyer J, Ramsay M. Data resource profile: Cardiovascular H3Africa Innovation Resource (CHAIR). *Int J Epidemiol*. 2018 Dec 6. [Epub ahead of print].
112. Sullivan KV, **Morgan DJ**, **Leekha S**. Use of diagnostic stewardship practices to improve urine culturing among SHEA Research Network hospitals. *Infect Control Hosp Epidemiol*. 2018 Dec 7:1-4. [Epub ahead of print].
113. Hicks GE, **Shardell MD**, Miller RR, Eastlack M, Orwig DL, Goodpaster BH, Chomentowski PJ, **Hochberg MC**, **Rathbun AM**, Cauley JA, Harris T, Satterfield S, Schafer AL, **Magaziner J**. Trunk muscle composition 2 months after hip fracture: Findings from the Baltimore Hip Studies. *Arch Phys Med Rehabil*. 2018 Dec 19. [Epub ahead of print].
114. Stewart CC, O'Hara NN, Orwig D, Hochberg MC, Sprague S, **Magaziner J**, Slobogean GP. Serum 25(OH)D Is Associated with an Altered Bone Turnover Marker Response After a Hip Fracture. *J Orthop Res*. 2018 Dec 21. [Epub ahead of print].
115. **Alsaggaf R**, **St George DMM**, Zhan M, Pfeiffer RM, Wang Y, Wagner KR, Greene MH, **Amr S**, Gadalla SM. Cancer Risk in Myotonic Dystrophy Type I: Evidence of a Role for Disease Severity. *JNCI Cancer Spectr*. 2018 Nov;2(4):pky052.
116. **Tracy JK**, Falk D, Thompson RJ, Scheindlin L, Adetunji F, Swanberg JE. Managing the cancer-work interface: the effect of cancer survivorship on unemployment. *Cancer Manag Res*. 2018 Nov 28;10:6479-6487.
117. Woodard JA, **Leekha S**, **Jackson SS**, **Thom KA**. Beyond entry and exit: Hand hygiene at the bedside. *Am J Infect Control*. 2018 Dec 21. [Epub ahead of print].
118. Rodriguez-Hart C, Bradley C, German D, Musci R, Orazulike I, Baral S, Liu H, Crowell TA, Charurat M, **Nowak RG**; TRUST/RV368 Study Group. The Synergistic Impact of Sexual Stigma and Psychosocial Well-Being on HIV Testing: A Mixed-Methods Study Among Nigerian Men who have Sex with Men. *AIDS Behav*. 2018 Dec;22(12):3905-3915.
119. **Albrecht JS**, Hanna M, Kim D, Perfetto EM. Predicting Diagnosis of Alzheimer's Disease and Related Dementias Using Administrative Claims. *J Manag Care Spec Pharm*. 2018 Nov;24(11):1138-1145.

## Appendix B – Publications

120. Crowell TA, Baral SD, Schwartz S, **Nowak RG**, Kokogho A, Adebajo S, Keshinro B, Makanjuola O, Michael NL, Robb ML, **Charurat ME**, Ake JA; TRUST/RV368 Study Group. Time to change the paradigm: limited condom and lubricant use among Nigerian men who have sex with men and transgender women despite availability and counseling. *Ann Epidemiol*. 2018 Dec 21. [Epub ahead of print].
121. Klebanoff MA, **Brotman RM**. Treatment of bacterial vaginosis to prevent preterm birth. *Lancet*. 2018 Nov 17;392(10160):2141-2142.
122. **Chen, S.**, Xing, Y., Kang, J., Kochunov, P., Hong, L. E. Bayesian modeling of dependence in brain connectivity data, *Biostatistics*. 2018. In press.
123. **Chen, S.**, Kang, J., Xing, Y., Zhao, Y., Milton, D. Network induced large covariance matrix estimation. *Computational Statistics and Data Analysis*. 2018. In press.
124. Turpin, R. E., Slopen, N., **Chen, S.**, Boekeloo, B., Dallal, C., Dyer, T. Latent class analysis of a syndemic of risk factors on HIV testing among black men. *AIDS care*, 2018. 1-8.
125. Shaw, E. P., Rietschel, J. C., Shuggi, I. M., Xing, Y., Hendershot, B. D., Pruziner, A. L., **Chen, S**, Gentili, R. J. Evaluation of cerebral cortical networking as a measure of cognitive workload during dual-task walking under various levels of challenge. *JOURNAL OF SPORT & EXERCISE PSYCHOLOGY*. 2018 Aug. 40:S65-S65.
126. Clark, S. M., Notarangelo, F. M., Li, X., **Chen, S.**, Schwarcz, R., Tonelli, L. H. Maternal immune activation in rats blunts brain cytokine and kynurenine pathway responses to a second immune challenge in early adulthood. *Progress in Neuro-Psychopharmacology and Biological Psychiatry*. 2018.
127. Elegbede A, Mermulla S, Diabonu SC, McNichols C, **Liang Y**, Liang F, Rasko YM, Grant MP, Nam AJ. Patient reported outcomes in facial trauma reconstruction: Assessment of FACE-Q scales and predictors of patient satisfaction. *Plastic and Reconstructive Surgery Global Open*, 2018 Dec 5;6(12):e2004.
128. Diaconu SC, McNichols CHL, AlFadil S, **Liang Y**, Bai J, Silverman RP, Grant MP, Nam AJ, Rasko YM. Postoperative Outcomes in Obese Patients that Undergo Ventral Hernia Repair vs. Ventral Hernia Repair with Concurrent Panniculectomy. *Plast Reconstr Surg*. 2019 Jan 21. [Epub ahead of print].
129. **LaKind JS**, O'Mahony C, Armstrong T, Tibaldi R, Blount BC, Naiman DQ. ExpoQual: Evaluating measured and modeled human exposure data. *Environ Res*. 2019 Apr;171:302-31.
130. **LaKind JS**, Idri F, Naiman DQ, Verner MA. Biomonitoring and Nonpersistent Chemicals-Understanding and Addressing Variability and Exposure Misclassification. *Curr Environ Health Rep*. 2019 Jan 30 [Epub ahead of print].
131. Sheehan KJ, Smith TO, Martin FC, Johansen A, Drummond A, Beaupre L, **Magaziner J**, Whitney J, Hommel A, Cameron ID, Price I, Sackley C. Conceptual Framework for an Episode of Rehabilitative Care After Hip Fracture Surgery. *Phys Ther*. 2019 Mar 1;99(3):276-285.
132. Dareng EO, **Adebamowo SN**, Famooto A, Olawande O, Odutola MK, Olaniyan Y, Offiong RA, Pharoah PP, **Adebamowo CA**. Prevalence and incidence of genital warts and cervical Human Papillomavirus infections in Nigerian women. *BMC Infect Dis*. 2019 Jan 7;19(1):27.
133. Bilgrami Z, Abutaleb A, Chudy-Onwugaje K, **Langenberg P**, Regueiro M, Schwartz DA, **Tracy JK**, Ghazi L, Patil SA, Quezada SM, Russman KM, **Quinn CC**, Jambaulikar G, Beaulieu DB, Horst S, Cross RK Jr. Effect of TELEmedicine for Inflammatory Bowel Disease on Patient Activation and Self-Efficacy.

- Dig Dis Sci. 2019 Jan 2.. [Epub ahead of print].
134. Marcolini EG, **Albrecht JS**, Sethuraman KN, Napolitano LM. Gender Disparities in Trauma Care: How Sex Determines Treatment, Behavior, and Outcome. *Anesthesiol Clin*. 2019 Mar;37(1):107-117.
  135. Glass NE, Vadlamani A, Hwang F, Sifri ZC, Kunac A, Bonne S, Pentakota SR, Yonclas P, Mosenthal AC, Livingston DH, **Albrecht JS**. Bleeding and Thromboembolism After Traumatic Brain Injury in the Elderly: A Real Conundrum. *J Surg Res*. 2019 Mar;235:615-620.
  136. Amann RI, Baichoo S, Blencowe BJ, Bork P, Borodovsky M, Brooksbank C, Chain PSG, Colwell RR, Daffonchio DG, Danchin A, de Lorenzo V, Dorrestein PC, Finn RD, Fraser CM, Gilbert JA, Hallam SJ, Hugenholtz P, Ioannidis JPA, Jansson JK, Kim JF, Klenk HP, Klotz MG, Knight R, Konstantinidis KT, Kyrpides NC, Mason CE, McHardy AC, Meyer F, Ouzounis CA, Patrinos AAN, Podar M, Pollard KS, Ravel J, Muñoz AR, Roberts RJ, Rosselló-Móra R, Sansone SA, Schloss PD, **Schriml LM**, Setubal JC, Sorek R, Stevens RL, Tiedje JM, Turjanski A, Tyson GW, Ussery DW, Weinstock GM, **White O**, Whitman WB, Xenarios I. Toward unrestricted use of public genomic data. *Science*. 2019 Jan 25;363(6425):350-352.
  137. Wang Y, **Hager ER**, **Magder LS**, Arbaiza R, Wilkes S, Black MM. A Dyadic Analysis on Source Discrepancy and a Mediation Analysis via Self-Efficacy in the Parental Support and Physical Activity Relationship among Black Girls. *Child Obes*. 2019 Jan 17. [Epub ahead of print].
  138. Petri M, Fu W, Ranger A, Allaire N, Cullen P, **Magder LS**, **Zhang Y**. Association between changes in gene signatures expression and disease activity among patients with systemic lupus erythematosus. *BMC Med Genomics*. 2019 Jan 9;12(1):4.
  139. **Amr S**, **Wolpert BJ**, **St George DM**, James I, Loffredo CA. Body mass index modifies bladder cancer risk associated with low estrogen exposure among Egyptian women after menopause. *Cancer Causes Control*. 2019 Jan 21. [Epub ahead of print].
  140. Constine LS, Ronckers CM, Hua CH, Olch A, Kremer LCM, Jackson A, **Bentzen SM**. Pediatric Normal Tissue Effects in the Clinic (PENTEC): An International Collaboration to Analyse Normal Tissue Radiation Dose-Volume Response Relationships for Paediatric Cancer Patients. *Clin Oncol (R Coll Radiol)*. 2019 Jan 19. pii: S0936-6555(19)30026-3. doi: 10.1016/j.clon.2019.01.002. [Epub ahead of print].
  141. Baloh J, **Thom KA**, Perencevich E, Rock C, Robinson G, Ward M, Herwaldt L, Reisinger HS. Hand hygiene before donning nonsterile gloves: Healthcareworkers' beliefs and practices. *Am J Infect Control*. 2019 Jan 4. pii: S0196-6553(18)31107-6. [Epub ahead of print].
  142. McDermott MM, Polonsky TS, **Guralnik JM**, **Ferrucci L**, Tian L, Zhao L, Stein J, Domanchuk K, Criqui MH, Taylor DA, Li L, Kibbe MR. Racial Differences in the Effect of Granulocyte Macrophage Colony-Stimulating Factor on Improved Walking Distance in Peripheral Artery Disease: The PROPEL Randomized Clinical Trial. *J Am Heart Assoc*. 2019 Jan 22;8(2):e011001.
  143. Ng LS, **Guralnik JM**, Man C, DiGuseppi C, Strogatz D, Eby DW, Ryan LH, Molnar LJ, Betz ME, Hill L, Li G, Crowe CL, Mielenz TJ; LongROAD Research Team. Association of Physical Function With Driving Space and Crashes Among Older Adults. *Gerontologist*. 2019 Jan 8. [Epub ahead of print].
  144. Szanton SL, Xue QL, Leff B, **Guralnik J**, Wolff JL, Tanner EK, Boyd C, Thorpe RJ Jr, Bishai D, Gitlin LN. Effect of a Biobehavioral Environmental Approach on Disability Among Low-Income Older Adults: A Randomized Clinical Trial. *JAMA Intern Med*. 2019 Jan 7. doi: 10.1001/jamainternmed.2018.6026. [Epub ahead of print].

145. Tamma PD, Conley AT, Cosgrove SE, **Harris AD**, Lautenbach E, Amoah J, Avdic E, Tolomeo P, Wise J, Subudhi S, Han JH; Antibacterial Resistance Leadership Group. Association of 30-Day Mortality With Oral Step-Down vs Continued Intravenous Therapy in Patients Hospitalized With Enterobacteriaceae Bacteremia. *JAMA Intern Med.* 2019 Jan 22. doi: 10.1001/jamainternmed.2018.6226. [Epub ahead of print].
146. Curcio CL, Wu YY, Vafaei A, Barbosa JFS, Guerra R, **Guralnik J**, Gomez F. A Regression Tree for Identifying Risk Factors for Fear of Falling: The International Mobility in Aging Study (IMIAS). *J Gerontol A Biol Sci Med Sci.* 2019 Feb 8. doi: 10.1093/gerona/glz002. [Epub ahead of print].
147. Hageman SA, **St George DMM**. Health Savings Account Ownership and Financial Barriers to Health Care: What Social Workers Should Know. *Soc Work Public Health.* 2019 Feb 15:1-13.
148. Håkansson K, Rasmussen JH, **Bentzen SM**, Friborg J, Specht L, **Vogelius IR**. On the relation between improved loco-regional control and disease-free survival in head-and-neck cancer. *Acta Oncol.* 2019 Feb 15:1-3. [Epub ahead of print].
149. Morgan SC, Hoffman K, Loblaw DA, Buyyounouski MK, Patton C, Barocas D, **Bentzen S**, Chang M, Efsthathiou J, Greany P, Halvorsen P, Koontz BF, Lawton C, Leyrer CM, Lin D, Ray M, Sandler H. Hypofractionated Radiation Therapy for Localized Prostate Cancer: Executive Summary of an ASTRO, ASCO and AUA Evidence-Based Guideline. *J Urol.* 2019 Mar;201(3):528-534.
150. Beaupre LA, **Magaziner JS**, Jones CA, Jhangri GS, Johnston DWC, Wilson DM, Majumdar SR. Rehabilitation after Hip Fracture for Nursing Home Residents: A Controlled Feasibility Trial. *J Gerontol A Biol Sci Med Sci.* 2019 Feb 9. doi: 10.1093/gerona/glz031. [Epub ahead of print].
151. Dantes RB, Rock C, Milstone AM, Jacob JT, Chernetsky-Tejedor S, **Harris AD**, **Leekha S**. Preventability of hospital onset bacteremia and fungemia: A pilot study of a potential healthcare-associated infection outcome measure. *Infect Control Hosp Epidemiol.* 2019 Feb 18:1-4.. [Epub ahead of print].
152. Hammer A, de Koning MN, Blaakaer J, Steiniche T, Doorbar J, Griffin H, Mejlgard E, Svanholm H, Quint WG, **Gravitt PE**. Whole tissue cervical mapping of HPV infection: Molecular evidence for focal latent HPV infection in humans. *Papillomavirus Res.* 2019 Feb 14;7:82-87.
153. Yang CL, Creath RA, **Magder L**, Rogers MW, McCombe Waller S. Impaired posture, movement preparation, and execution during both paretic and nonparetic reaching following stroke. *J Neurophysiol.* 2019 Feb 20. doi: 10.1152/jn.00694.2018. [Epub ahead of print].
154. Lumsden EW, Troppoli TA, Myers SJ, Zanos P, **Aracava Y**, Kehr J, Lovett J, Kim S, Wang FH, Schmidt S, Jenne CE, Yuan P, Morris PJ, Thomas CJ, Zarate CA Jr, Moaddel R, Traynelis SF, **Pereira EFR**, Thompson SM, **Albuquerque EX**, Gould TD. Antidepressant-relevant concentrations of the ketamine metabolite (2R,6R)-hydroxynorketamine do not block NMDA receptor function. *Proc Natl Acad Sci U S A.* 2019 Feb 22. pii: 201816071. [Epub ahead of print].
155. Rice SR, Feigenberg SJ, Hamza M, Molitoris JK, **Bentzen SM**, Tkaczuk KHR, Rosenblatt PM, Bellavance EC, Nichols EM. Trends in utilization of hypofractionated whole breast irradiation (HF-WBI) in triple negative breast cancer (TNBC): a national cancer database (NCDB) analysis. *Breast Cancer Res Treat.* 2019 Feb 22. doi: 10.1007/s10549-019-05150-x. [Epub ahead of print].
156. Shaaban CE, Aizenstein HJ, Jorgensen DR, Mahbubani RLM, Meckes NA, Erickson KI, Glynn NW, Mettenburg J, **Guralnik J**, Newman AB, Ibrahim TS, Laurienti PJ, Vallejo AN, Rosano C. Physical Activity and Cerebral Small Vein Integrity in Older Adults. *Med Sci Sports Exerc.* 2019 Feb 26. [Epub ahead of print].

157. Holm JB, Humphrys MS, Robinson CK, Settles ML, Ott S, Fu L, Yang H, Gajer P, He X, McComb E, **Gravitt PE**, Ghanem KG, **Brotman RM**, Ravel J. Ultrahigh-Throughput Multiplexing and Sequencing of >500-Base-Pair Amplicon Regions on the Illumina HiSeq 2500 Platform. *mSystems*. 2019 Feb 19;4(1).
158. Turpin R, **Brotman RM**, Miller RS, Klebanoff MA, He X, Slopen N. Perceived stress and incident sexually transmitted infections in a prospective cohort. *Ann Epidemiol*. 2019 Jan 26. pii: S1047-2797(18)30884-6. [Epub ahead of print].
159. Lee MJ, Romero S, Velozo CA, **Gruber-Baldini AL**, Shulman LM. Multidimensionality of the PROMIS self-efficacy measure for managing chronic conditions. *Qual Life Res*. 2019 Feb 26. [Epub ahead of print].
160. Laurens MB, Sirima SB, Rotrosen E, Siribie M, Tiono AB, Ouedraogo A, **Liang Y**, Jamka LP, Kotloff KL, Neuzil K. A phase II, randomized, double-blind, controlled safety and immunogenicity trial of typhoid conjugate vaccine in children under 2 years of age in Ouagadougou, Burkina Faso: A methods paper. *Clinical Infectious Diseases* Mar 2019: 68(Supplement\_2): S59-S66.
161. Turner BJ, Winkler P, Valerio MA, **Liang Y**, Rodriguez N. Comparing sampling methods to engage residents of underrepresented communities to identify research priorities. Washington, DC: Patient-Centered Outcomes Research Institute (PCORI). March 2019. <https://doi.org/10.25302/3.2019.ME.13035729>.
162. **Jones LP**, Slade JL, Davenport F, Santos SLZ, Knott CL. Planning for Community Scale-Up of Project HEAL: Insights From the SPRINT Initiative. *Health Promot Pract*. 2019 Jan 24:1524839918824087 [Epub ahead of print].
163. Cisewski JA, Durbin LL, Bond EG, Qian M, **Guralnik JM**, Kasper J, Mielenz TJ. Reduced Lower Extremity Functioning Is Associated With an Increased Rate of Being a Nondriver: The National Health and Aging Trends Study. *Phys Ther*. 2019 Mar 5. [Epub ahead of print].
164. Ramalingam S, Ramamurthy VP, Gediya LK, Murigi FN, Purushottamachar P, Huang W, Choi EY, **Zhang Y**, Vasaitis TS, Kane MA, Lapidus RG, Njar VCO. The Novel Mnk1/2 Degradar and Apoptosis Inducer VNLG-152 Potently Inhibits TNBC Tumor Growth and Metastasis. *Cancers (Basel)*. 2019 Mar 3;11(3).
165. **Morgan DJ**, Bame B, Zimand P, Dooley P, **Thom KA**, Harris AD, **Bentzen S**, Ettinger W, Garrett-Ray SD, **Tracy JK**, **Liang Y**. Assessment of Machine Learning vs Standard Prediction Rules for Predicting Hospital Readmissions. *JAMA Netw Open*. 2019 Mar 1;2(3):e190348.
166. Blanco N, **O'Hara LM**, **Harris AD**. Transmission pathways of multidrug-resistant organisms in the hospital setting: a scoping review. *Infect Control Hosp Epidemiol*. 2019 Mar 6:1-10. [Epub ahead of print].
167. Goodman KE, Lessler J, Harris AD, Milstone AM, Tamma PD. A methodological comparison of risk scores versus decision trees for predicting drug-resistant infections: A case study using extended-spectrum beta-lactamase (ESBL) bacteremia. *Infect Control Hosp Epidemiol*. 2019 Mar 4:1-8.. [Epub ahead of print].
168. Claeys KC, Blanco N, Morgan DJ, Leekha S, Sullivan KV. Advances and Challenges in the Diagnosis and Treatment of Urinary Tract Infections: the Need for Diagnostic Stewardship. *Curr Infect Dis Rep*. 2019 Mar 5;21(4):11.

169. Emmanuel B, **EI-Kamary SS, Magder LS, Stafford KA**, Charurat ME, Poonia B, Chairez C, McLaughlin M, Hadigan C, Masur H, Kottlil S. Immunological recovery in T-cell activation after sustained virologic response among HIV positive and HIV negative chronic Hepatitis C patients. *Hepatology*. 2019 Mar 5. [Epub ahead of print].
170. Meiring JE, Laurens MB, Patel P, Patel P, Misiri T, Simiyu K, Mwakiseghile F, **Tracy JK, Masesa C, Liang Y**, Henrion M, Rotrosen E, Gmeiner M, Heyderman R, Kotloff K, Gordon MA, Neuzil KM. Typhoid Vaccine Acceleration Consortium Malawi: A Phase III, Randomized, Double-blind, Controlled Trial of the Clinical Efficacy of Typhoid Conjugate Vaccine Among Children in Blantyre, Malawi. *Clin Infect Dis*. 2019 Mar 7;68(Supplement\_2):S50-S58.
171. Cawthon PM, Trivison TG, Manini TM, Patel S, Pencina KM, Fielding RA, **Magaziner JM**, Newman AB, Brown T, Kiel DP, Cummings SR, Shardel M, **Guralnik J**, Woodhouse LJ, Pahor M, Binder E, D'Agostino RB, Xue QL, Orwoll E, Landi F, **Orwig D**, Schaap L, Latham N NK, Hirani V, Kwok T, Pereira S, Rooks D, Kashiwa M, Torres-Gonzalez M, Menetski JP, Correa-De-Araujo R, Bhasin S; Sarcopenia Definition and Outcomes Consortium Conference participants. Establishing the Link Between Lean Mass and Grip Strength Cut-points With Mobility Disability and Other Health Outcomes: Proceedings of the Sarcopenia Definition and Outcomes Consortium Conference. *J Gerontol A Biol Sci Med Sci*. 2019 Mar 14. [Epub ahead of print].
172. Zandberg DP, Tallon LJ, Nagaraj S, Sadzewicz LK, **Zhang Y**, Strome MB, Zhao XE, Vavikolanu K, Zhang X, Papadimitriou JC, Hubbard FA, **Bentzen SM**, Strome SE, Fraser CM. Intratumor genetic heterogeneity in squamous cell carcinoma of the oral cavity. *Head Neck*. 2019 Mar 14. doi: 10.1002/hed.25719. [Epub ahead of print].
173. So EC, Khaladj-Ghom A, Ji Y, Amin J, Song Y, Burch E, Zhou H, Sun H, Chen S, **Bentzen S**, Hertzano R, Zhang X, Strome SE. NK cell expression of Tim-3: First impressions matter. *Immunobiology*. 2019 Mar 2. [Epub ahead of print].
174. **Hammer A**, Kahlert J, **Gravitt PE**, Rositch AF. Hysterectomy-corrected cervical cancer mortality rates in Denmark during 2002-2015: a registry-based cohort study. *Acta Obstet Gynecol Scand*. 2019 Mar 13. doi: 10.1111/aogs.13608. [Epub ahead of print].
175. Auais M, Ahmed T, Alvarado B, Phillips SP, Rosendaal N, Curcio CL, Fernandes J, **Guralnik J**, Zunzunegui MV. Gender differences in four-year incidence of self-reported and performance-based functional disability: The International Mobility in Aging Study. *Arch Gerontol Geriatr*. 2019 Mar 6;82:266-272.[Epub ahead of print].
176. Yang P, Xu C, Reece EA, Chen X, Zhong J, **Zhan M**, Stumpo DJ, Blackshear PJ, Yang P. Tip60- and sirtuin 2-regulated MARCKS acetylation and phosphorylation are required for diabetic embryopathy. *Nat Commun*. 2019 Jan 17;10(1):282.
177. Remick JS, Bentzen SM, Simone CB 2nd, Nichols E, Suntharalingam M, Regine WF. Downstream Effect of a Proton Treatment Center on an Academic Medical Center. *Int J Radiat Oncol Biol Phys*. 2019 Mar 15. pii: S0360-3016(19)30372-4. [Epub ahead of print].
178. Crowder HR, Brown SE, Stennett CA, Johnston E, Wnorowski AM, Mark KS, **Brotman RM**. Patterns in on-time, daily submission of a short web-based personal behavior survey in a longitudinal women's health study. *Sex Transm Dis*. 2019 Mar 14. [Epub ahead of print].
179. Clendenen TV, Ge W, Koenig KL, Afanasyeva Y, Agnoli C, Brinton LA, Darvishian F, **Dorgan JF**, Eliassen AH, Falk RT, Hallmans G, Hankinson SE, Hoffman-Bolton J, Key TJ, Krogh V, Nichols HB, Sandler DP, Schoemaker MJ, Sluss PM, Sund M, Swerdlow AJ, Visvanathan K, Zeleniuch-Jacquotte A,



- Liu M. Breast cancer risk prediction in women aged 35-50 years: impact of including sex hormone concentrations in the Gail model. *Breast Cancer Res.* 2019 Mar 19;21(1):42.
180. Rudolph ME, McArthur MA, Magder LS, Barnes RS, Chen WH, Sztein MB. Age-Associated Heterogeneity of Ty21a-Induced T Cell Responses to HLA-E Restricted Salmonella Typhi Antigen Presentation. *Front Immunol.* 2019 Mar 4;10:257.
181. Vyfhuis MAL, **Bentzen SM**, Molitoris JK, Diwanji T, Badiyan S, Grover S, **Adebamowo CA**, Simone CB 2nd, Mohindra P. Patterns of Care and Survival in Stage III NSCLC Among Black and Latino Patients Compared With White Patients. *Clin Lung Cancer.* 2019 Feb 28. pii: S1525-7304(19)30065-8. [Epub ahead of print].
182. Shulman LM, Velozo C, Romero S, **Gruber-Baldini AL**. Comparative study of PROMIS(□) self-efficacy for managing chronic conditions across chronic neurologic disorders. *Qual Life Res.* 2019 Mar 26. [Epub ahead of print].
183. Lee MJ, Romero S, Velozo CA, **Gruber-Baldini AL**, Shulman LM. Multidimensionality of the PROMIS self-efficacy measure for managing chronic conditions. *Qual Life Res.* 2019 Feb 26. doi: 10.1007/s11136-019-02116-w. [Epub ahead of print].
184. Pearson CF, **Quinn CC**, Loganathan S, Datta AR, Mace BB, Grabowski DC. The Forgotten Middle: Many Middle-Income Seniors Will Have Insufficient Resources For Housing And Health Care. *Health Aff (Millwood).* 2019 Apr 24:101377hlthaff201805233. doi: 10.1377/hlthaff.2018.05233. [Epub ahead of print].
185. **Liang Y**, Ketchum NS, Turner BJ, Flores J, Bullock D, Villarreal R, Noël PH, Yin MT, Taylor BS. Cardiovascular Risk Assessment Varies Widely by Calculator and Race/Ethnicity in a Majority Latinx Cohort Living with HIV. *J Immigr Minor Health.* 2019 Apr 19. [Epub ahead of print].
186. Dantes RB, Abbo LM, Anderson D, Hall L, Han JH, **Harris AD**, **Leekha S**, Milstone AM, **Morgan DJ**, Safdar N, Schweizer ML, Sengupta S, Seo SK, Rock C. Hospital epidemiologists' and infection preventionists' opinions regarding hospital-onset bacteremia and fungemia as a potential healthcare-associated infection metric. *Infect Control Hosp Epidemiol.* 2019 Apr 1:1-5. [Epub ahead of print].
187. Vadlamani A, Perry JA, McCunn M, Stein DM, **Albrecht JS**. Racial Differences in Discharge Location Following a Traumatic Brain Injury among Older Adults. *Arch Phys Med Rehabil.* 2019 Apr 4. pii: S0003-9993(19)30236-9. [Epub ahead of print].
188. Rudolph ME, McArthur MA, **Magder LS**, Barnes RS, Chen WH, Sztein MB. Characteristics of regulatory T-cell populations before and after Ty21a typhoid vaccination in children and adults. *Clin Immunol.* 2019 Apr 3. [Epub ahead of print].
189. Adige S, Lapidus RG, Carter-Cooper BA, Duffy A, Patzke C, Law JY, Baer MR, Ambulos NP, Zou Y, **Bentzen SM**, Emadi A. Equipotent doses of daunorubicin and idarubicin for AML: a meta-analysis of clinical trials versus in vitro estimation. *Cancer Chemother Pharmacol.* 2019 Apr 9. [Epub ahead of print].
190. Rasmussen JH, Lelkaitis G, Håkansson K, Vogelius IR, Johannesen HH, Fischer BM, **Bentzen SM**, Specht L, Kristensen CA, von Buchwald C, Wessel I, Friborg J. Intratumor heterogeneity of PD-L1 expression in head and neck squamous cell carcinoma. *Br J Cancer.* 2019 Apr 10. [Epub ahead of print].
191. Morgan SC, Hoffman K, Loblaw DA, Buyyounouski MK, Patton C, Barocas D, **Bentzen S**, Chang M, Efsthathiou J, Greany P, Halvorsen P, Koontz BF, Lawton C, Leyrer CM, Lin D, Ray M, Sandler H.

- Hypofractionated Radiation Therapy for Localized Prostate Cancer: Executive Summary of an ASTRO, ASCO and AUA Evidence-Based Guideline. *J Urol*. 2019 Mar;201(3):528-534.
192. Corso T, Grignol G, Kulesza R, Merchenthaler I, Dudas B. Accessory mammillary bodies formed by the enlarged lateral mammillary nuclei: cytoarchitecture. *Brain Struct Funct*. 2019 Apr 10. [Epub ahead of print].
193. Colón-Emeric C, Pieper CF, Schmader KE, Sloane R, Bloom A, McClain M, **Magaziner J**, Huffman KM, **Orwig D**, Crabtree DM, Whitson HE. Two Approaches to Classifying and Quantifying Physical Resilience in Longitudinal Data. *J Gerontol A Biol Sci Med Sci*. 2019 Apr 17. [Epub ahead of print].
194. Goates S, Du K, Arensberg MB, Gaillard T, **Guralnik J**, Pereira SL. Economic Impact of Hospitalizations in US Adults with Sarcopenia. *J Frailty Aging*. 2019;8(2):93-99.
195. **LaKind JS**, Pollock T, Naiman DQ, Kim S, Nagasawa A, Clarke J. Factors affecting interpretation of national biomonitoring data from multiple countries: BPA as a case study. *Environ Res*. 2019 Mar 26;173:318-329.
196. Chowdhury G, **Stine OC**, Rajendran K, Mukhopadhyay AK, Okamoto K, Ramamurthy T. Detection of Uncommon Enteric Bacterial Pathogens from Acute Diarrheal Specimens Using SYBR-Green Real Time PCR. *Jpn J Infect Dis*. 2019 Mar 25;72(2):88-93.
197. DeCesaris C, Rice SR, **Bentzen SM**, Jatzczak J, Mishra MV, Nichols EM. Quantification of Acute Skin Toxicities in Breast Cancer Patients Undergoing Adjuvant Proton vs. Photon Radiation Therapy: A single institutional experience. *Int J Radiat Oncol Biol Phys*. 2019 Apr 24. [Epub ahead of print].
198. Stick LB, **Vogelius IR**, Modiri A, Rice SR, Maraldo MV, Sawant A, **Bentzen SM**. Inverse radiotherapy planning based on bioeffect modelling for locally advanced left-sided breast cancer. *Radiother Oncol*. 2019 Apr 3;136:9-14.
199. Zanjani F, **Gruber-Baldini AL**, Resnick B, **Orwig D**, **Hochberg M**, **Magaziner J**. The Relationship Between Alcohol Consumption and Hip Fracture Recovery Among Older Adults. *J Appl Gerontol*. 2019 Apr 26. [Epub ahead of print].
200. Kaplan MH, Kaminski M, Estes JM, Gitlin SD, Zahn J, Elder JT, Tejasvi T, Gensterblum E, Sawalha AH, McGowan JP, Dosik MH, Direskeneli H, Direskeneli GS, **Adebamowo SN**, **Adebamowo CA**, Sajadi M, Contreras-Galindo R. Structural variation of centromeric endogenous retroviruses in human populations and their impact on cutaneous T-cell lymphoma, Sézary syndrome, and HIV infection. *BMC Med Genomics*. 2019 May 2;12(1):58.
201. Noone AM, Pfeiffer RM, Dorgan JF, **Magder LS**, Bromberg JS, Lynch CF, Morris CR, Pawlish KS, Engels EA. Cancer-attributable mortality among solid organ transplant recipients in the United States: 1987 through 2014. *Cancer*. 2019 Apr 29. doi: 10.1002/cncr.32136. [Epub ahead of print].
202. **O'Hara LM**, **Blanco N**, **Leekha S**, **Stafford KA**, Slobogean GP, Ludeman E, **Harris AD**; CDC Prevention Epicenters Program. Design, implementation, and analysis considerations for cluster-randomized trials in infection control and hospital epidemiology: A systematic review. *Infect Control Hosp Epidemiol*. 2019 May 2:1-7.
203. Spanakis EK, Umpierrez GE, Siddiqui T, **Zhan M**, Snitker S, Fink JC, **Sorkin JD**. "Association of glucose concentrations at hospital discharge with readmissions and mortality: A nationwide cohort study." *J Clin Endocrinol Metab*. 2019 May 1. [Epub ahead of print].

## Appendix B – Publications

204. Lumsden EW, Troppoli TA, Myers SJ, Zanos P, **Aracava Y**, Kehr J, Lovett J, Kim S, Wang FH, Schmidt S, Jenne CE, Yuan P, Morris PJ, Thomas CJ, Zarate CA Jr, Moaddel R, Traynelis SF, **Pereira EFR**, Thompson SM, Albuquerque EX, Gould TD. Antidepressant-relevant concentrations of the ketamine metabolite (2R,6R)-hydroxynorketamine do not block NMDA receptor function. *Proc Natl Acad Sci U S A*. 2019 Mar 12;116(11):5160-5169.
205. Campo G, Maietti E, Tonet E, Biscaglia S, Ariza-Solè A, Pavasini R, Tebaldi M, Cimaglia P, Bugani G, Serenelli M, Ruggiero R, Vitali F, Formiga F, Sanchis J, Galvani M, Minarelli M, Ricci Lucchi G, Ferrari R, **Guralnik J**, Volpato S. The assessment of scales of frailty and physical performance improves prediction of major adverse cardiac events in older adults with acute coronary syndrome. *J Gerontol A Biol Sci Med Sci*. 2019 May 10. [Epub ahead of print].
206. Coni A, Mellone S, Colpo M, **Guralnik JM**, Patel KV, Bandinelli S, Chiari L. An Exploratory Factor Analysis of Sensor-Based Physical Capability Assessment. *Sensors (Basel)*. 2019 May 14;19(10).
207. **Harris AD**, Johnson JK, **Pineles L**, **O'Hara LM**, Bonomo RA, **Thom KA**. Patient-to-Patient Transmission of *Acinetobacter baumannii* Gastrointestinal Colonization in the Intensive Care Unit. *Antimicrob Agents Chemother*. 2019 May 13. [Epub ahead of print].
208. Kerns SL, Fachal L, Dorling L, Barnett GC, Baran A, Peterson DR, Hollenberg M, Hao K, Narzo AD, Ahsen ME, Pandey G, **Bentzen SM**, Janelins M, Elliott RM, Pharoah PDP, Burnet NG, Dearnaley DP, Gulliford SL, Hall E, Sydes MR, Aguado-Barrera ME, Gómez-Caamaño A, Carballo AM, Peleteiro P, Lobato-Busto R, Stock R, Stone NN, Ostrer H, Usmani N, Singhal S, Tsuji H, Imai T, Saito S, Eeles R, DeRuyck K, Parliament M, Dunning AM, Vega A, Rosenstein BS, West CML. Radiogenomics Consortium Genome-Wide Association Study Meta-analysis of Late Toxicity after Prostate Cancer Radiotherapy. *J Natl Cancer Inst*. 2019 May 16. [Epub ahead of print].
209. **O'Hara LM**, Caturegli I, O'Hara NN, O'Toole RV, Dalury DF, **Harris AD**, Manson TT. What publicly available quality metrics do hip and knee arthroplasty patients care about most when selecting a hospital in Maryland: a discrete choice experiment. *BMJ Open*. 2019 May 19;9(5):e028202.
210. **Pineles L**, Perencevich EN, Roghmann MC, Gupta K, Cadena J, Baracco G, Pfeiffer CD, Forrest G, Bradley SF, Crnich C, Reisinger HS, Morgan DJ. Frequency of nursing home resident contact with staff, other residents, and the environment outside resident rooms. *Infect Control Hosp Epidemiol*. 2019 May 20:1-3. [Epub ahead of print].
211. Mojica CM, **Liang Y**, Foster BA, Parra-Medina D. The Association Between Acculturation and Parental Feeding Practices in Families With Overweight and Obese Hispanic/Latino Children. *Fam Community Health*. 2019 Jul/Sep;42(3):180-188.
212. **Quinn CC**, Chard S, Roth EG, Eckert JK, Russman KM, Cross RK The Telemedicine for Patients With Inflammatory Bowel Disease (TELE-IBD) Clinical Trial: Qualitative Assessment of Participants' Perceptions *J Med Internet Res* 2019;21(6):e14165.
213. **Adebamowo SN**, Adeyemo AA; ACCME Research Group as part of the H3Africa Consortium. Classical HLA alleles are associated with prevalent and persistent cervical high-risk HPV infection in African women. *Hum Immunol*. 2019 May 6. [Epub ahead of print].

**EPH Fiscal Year 2019 Academic Honors and Awards  
for Faculty, Staff and Students**

**Faculty and Staff**

- Jennifer Albrecht, PhD, Assistant Professor, was awarded the 2019 Epidemiology & Human Genetics Program and Gerontology Programs Faculty Mentoring Award.
- Lori Edwards, DrPH, RN, PHCNS-BC, Assistant Professor, was bestowed the 2019 Master of Public Health Teaching and Mentoring Faculty Award.
- Anthony Harris, MD, MPH, Professor, was awarded the 2019 Medical School Teaching Award from the Department of Epidemiology and Public Health.
- Helen Powell, PhD, Research Associate, was awarded the 2019 Epidemiology & Human Genetics and Gerontology Programs Faculty Teaching Award.
- Mark Travassos, MD, MSc, Assistant Professor was awarded the GPILS Dr. Patricia Sokolove Outstanding Mentor of the Year Award.
- 2019 Faculty Inductees into Delta Omega Honorary Society in Public Health by the Beta Tau Chapter.
  - From our MPH faculty -
    - Erin Hager, PhD

**Students**

- Shaundra “Shae” Allen, MSW, LCSW-C, doctoral student in Gerontology, a Caregiver Support Coordinator at the VA Maryland Health Care System, was selected as the 2018-2019 Health and Aging Policy/ American Political Science Association Congressional Fellow. The Health and Aging Policy Fellows program is designed to build a cadre of geriatric and gerontology professionals who can help shape a positive and healthy future for older Americans by contributing valuable science and practice knowledge to the health care policy arena as well as bringing greater awareness and sophistication in health policy to the clinical and scientific communities through a broad interdisciplinary focus.
- Sarah Brown, doctoral student in Molecular Epidemiology, received the 2019 Patricia Langenberg Scholarship Endowment in Women's Health & Epidemiology.
- Lahila-Ojeda Carina, Preventive Medicine Resident and MPH Student, received a Delta Omega student poster award.
- Sarah Holmes, doctoral student in Gerontology, was awarded a James McKenney Student Award from the Association for Gerontology in Higher Education in March 2018; One of 10 students selected from an international pool of applicants to be awarded travel funds to attend the AGHE 2018 Annual Meeting. Evaluated based on essay and CV competition.
- Laura King, doctoral student in Gerontology, was awarded a UMBC Dissertation Fellowship. This fellowship is designed to provide doctoral candidates at UMBC an opportunity to devote the necessary concentration and attention towards finishing the writing of their dissertations.
- Maggie Matern, doctoral student in Epidemiology, was funded on an F31 Predoctoral Fellowship from the NIH. “To be or not to be – GF11 as a Critical Factor in Hair Cell Fate and Survival Principal investigator”: University of Maryland School of Medicine NIH/NIDCD F31 DC016218, \$93,133.00.
- Rob Millar, doctoral student in Gerontology, was awarded a 2019 Underrepresented Student Workshop Travel Award (\$ 1,000) from the Society of Multivariate Experimental Psychology.
- Kareshma Mohanty, doctoral student in Epidemiology, received the 2019 Health Disparities Research Award.
- Basant Motawi, doctoral student in Epidemiology, received the 2019 Renee Royak-Schaler Memorial Endowment Award.
- Basant Motawi, doctoral student in Epidemiology, received the Society of Epidemiologic Research (SER) student workshop awardee.
- Basant Motawi, doctoral student in Epidemiology, was selected for the Schlumberger Foundation Faculty for the Future Fellowship program.

## Appendix C – Academic Awards and Honors

- Heather Mutchie, doctoral student in Gerontology, was awarded Gerontology and Geriatrics Education and Research Program Award for best oral presentation at the UMB Graduate Research Day for, “The Feasibility of the Four-Square Step Test.”
- Emily Stucke, doctoral student in Epidemiology, was funded on an F31 Predoctoral Fellowship from the NIH. The title of the grant is "Identification of parasite erythrocyte membrane antigens specific to cerebral malaria and severe malarial anemia pathogenesis."
- Jamila Torain, doctoral student in Gerontology, was awarded The Victor E. and Dorothy M. McIntosh Award for "her meritorious service to humanity that is continually demonstrated by ongoing acts of generosity and kindness through outreach to the community."
- Aparna Vadlamani, doctoral student in Epidemiology, was awarded the Outstanding Poster presentation and Geriatrics and Gerontology Education and Research Program (GGEAR) Presentation Award, University of Maryland, Baltimore 41st Annual Graduate Research Conference 2019.
- Doris Yimgang, doctoral student in Epidemiology, was funded on an F31 Predoctoral Fellowship from the NIH. “Association between iron deficiency with or without anemia and child development among infants: cross-sectional and longitudinal analyses” NICHD, 1 F31 HD095615-01 Annual Direct Costs: \$38,509.
- Albert Zhou, doctoral student in Epidemiology, was awarded Outstanding Presentation Award at the Institute for Clinical and Translational Research (ICTR) Scholar - 41st Annual Graduate Research Conference.
- Albert Zhou, doctoral student in Epidemiology, was awarded the Infectious Diseases Society of America: Grants for Emerging Researcher/Clinician Mentorship Program (GERM) Award.
- Albert Zhou, doctoral student in Epidemiology, was selected as a Maurice R. Hilleman Early-Stage Career Investigator Award Finalist.
- Albert Zhou, doctoral student in Epidemiology, was awarded the Attilio R. and Myrtle L. Jackson Award for Community Service and Outreach.
- Albert Zhou, doctoral student in Epidemiology, was awarded the MSTP Nataro Family Foundation Scholarship.
- Albert Zhou, doctoral student in Epidemiology, was funded on the NIH F30 HL146095-01A1 (PI: Zhou, Albert).
- 2019 Student and Alumni Inductees into Delta Omega Honorary Society in Public Health by the Beta Tau Chapter.
  - From our alumni –
    - Katherine Campbell
    - Perri Carroll
    - Akiba Drew
    - Jawanna Henry
    - Robert Sellke
  - From our 2019 MPH graduating class –
    - Brendan Day
    - Charles Fleming
    - Rahel Kebede
    - Talia Kozlowski
    - Christopher Petrucelli