

University of Maryland  
School of Medicine

**DEPARTMENT OF EPIDEMIOLOGY AND PUBLIC HEALTH**

**Fiscal Year 2020 Annual Report**  
(July 1, 2019-June 30, 2020)

Chair:  
Jay Magaziner, PhD, MSHyg

**DEPARTMENT OF EPIDEMIOLOGY AND PUBLIC HEALTH**

**Fiscal Year 2020 Annual Report  
Table of Contents**

<b><u>CONTENTS</u></b>	<b><u>PAGE</u></b>
<b>Executive Summary</b> .....	1
<b>FY20 Accomplishments</b> .....	2
Research	
Education	
Clinical Care	
Community Outreach	
Leadership	
• Administration	
• Finance	
• Development	
<b>FY20 We Wills</b> .....	8
<b>FY21 We Wills</b> .....	12
<b>Appendix</b> .....	15
A - Organizational Chart	
B – Publications	
C - Academic Awards/Honors	

## EPH EXECUTIVE SUMMARY FOR FISCAL YEAR 2020

The executive summary below outlines the department's activities in fiscal year 2020 (FY2020).

**Research.** EPH faculty remained focused on reaching the SOM mission areas related to research. EPH faculty published a total of 94 peer-reviewed papers. More than 126 grant applications, requesting \$135.7m in TCs were submitted.

Active extramural awards to all faculty with primary appointments in EPH totaled \$56.7m and averaged \$1.2m per full-time EPH faculty member. Overall, awards were up by 21% from FY2019. Eighty-seven percent of EPH faculty receive funding from federal sources and the department will strive to maintain this high level of funding in FY2021. The 2019 Blue Ridge Report on NIH funding ranked EPH #10 among like departments in schools of medicine nationwide and ranked EPH #4 among public institutions.

**Education.** During the second half of FY2020, all academic programs associated with the department moved to distance learning. Each instructor implemented the type of learning format (synchronous or asynchronous) that best fit the needs of the students and course material. Throughout FY2020, EPH continued to grow the academic programs associated with the department by using SOMs strategic plan as a guide. As a result, 38 students graduated from programs EPH faculty led and the department continued to lead the Epidemiology Section in the medical school curriculum and students continued to score well on the epidemiology sections of the USMLE.

**Clinical Service.** During FY2020, six EPH faculty provided clinical care. Faculty members provided medical evaluations and consultations for children with possible child abuse and neglect, as well as preceptorship of medicine and pediatric residents at Sinai Hospital. Five faculty lead the UMMC and Baltimore VAMC Infection Control Programs, and attend at the UMMC and/or the medicine inpatient unit at the VA. During the second half of FY2020, the clinical infection control group led by Dr. Harris assumed responsibility for the infection control response for UMMS. They also expanded their clinical research to measure the prevalence of COVID-19 antibodies among healthcare personnel in the University of Maryland Medical System and the Baltimore VA Healthcare System.

**Community Outreach.** Community outreach is highly valued by our department and during FY2020, the Community Outreach Program continued to expand the department's outreach in the local community while also sharing our knowledge and skills with national and international communities. However, the COVID-19 pandemic in the latter half of the year restricted our ability to participate in some of our usual annual service activities but also provided the department with new opportunities. Additionally, the MPH Program continued its service-learning requirement for all students in their first term.

**Administration.** During FY2020, EPH was fully functioning and running at maximum capacity. EPH faculty and staff effort reporting is balanced, employee timesheets were submitted and approved in a timely manner. The EPH social media presence continued through Facebook and Twitter. The department also continued to publish *EPH Weekly*, a digest of departmental accomplishments and events.

**Finance:** All state and revolving accounts were balanced at year-end and the year-end balance in the DRIF account was \$\$808,000.

**Development:** In FY2020, we received \$123,500 in new funds and gifts. Fifteen new leads were identified. The annual Renee Royak-Schaler Lecture in Health Equity was postponed until April 2021 because of the COVID-19 pandemic.

## FISCAL YEAR 2020 ACCOMPLISHMENTS

### Covid-19 Pandemic-related Activities

EPH faculty are collaborating at UMB, across the US, and around the world to address the Covid-19 pandemic. Below is a table that briefly summarizes many of these important efforts by faculty within the department.

Faculty	Activity
Soren Bentzen, MSc, PhD, DMSc	<ul style="list-style-type: none"> <li>• Member of the UMB COVID-19 Human Research Coordinating Committee</li> <li>• Dean’s Reece’s Steering Committee on COVID-19 and Data Science</li> <li>• Collaborating in a Randomized Placebo Controlled Trial of Best Conventional Care vs Best Conventional Care for Hospitalized Patients with COVID-19</li> <li>• Collaborating in a Hormonal Intervention for Treatment of Veterans with COVID-19 Phase 2 Randomized Trial</li> <li>• Collaborating on an RO1 proposal for Molecular Biology of IPF in COVID-19 Survivors</li> <li>• Collaborating on developing a protocol to perform a case-control study to assess the impact of social distancing and personal protection activities on risk of infection with COVID-19</li> </ul>
Jessica Brown, PhD	<ul style="list-style-type: none"> <li>• Collaborating on developing a protocol to perform a case-control study to assess the impact of social distancing and personal protection activities on risk of infection with COVID-19</li> </ul>
Ann Gruber-Baldini, PhD	<ul style="list-style-type: none"> <li>• Collaborating with Drs. Kheirbek, and Shulman on a proposal to NIA called “Together Yet Apart: Optimizing Family Engagement for Hospitalized COVID -19 Patients</li> <li>• Collaborating in a Gilead-funded study to conduct follow-up telephone interviews about the impact of COVID-19 on aging and HIV study participants</li> </ul>
Anthony Harris, MD, MPH and the clinical infection control group	<ul style="list-style-type: none"> <li>• Assumed responsibility for the infection control response for UMMS. They also expanded their clinical research to measure the prevalence of COVID-19 antibodies among healthcare personnel in the University of Maryland Medical System and the Baltimore VA Healthcare System</li> </ul>
Laundette Jones, PhD, MPH	<ul style="list-style-type: none"> <li>• Participating in the interdisciplinary UMMS/SOM COVID Disparities Workgroup</li> <li>• Collaborating on a proposal to UMMS and SOM leadership called Population Health Initiative to Address Health Equity</li> </ul>
Wendy Lane, MD, MPH	<ul style="list-style-type: none"> <li>• Working on a multicenter study examining changes in rates of hospitalizations and emergency department visits for child physical abuse in the wake of the COVID-19 pandemic</li> </ul>
Laurence S. Magder, PhD	<ul style="list-style-type: none"> <li>• Leading a collaboration on the development of a protocol to perform a case-control study to assess the impact of social distancing and personal protection activities on risk of infection with COVID-19</li> </ul>
Lyndsay M. O’Hara, PhD, MPH	<ul style="list-style-type: none"> <li>• Collaborating on developing a protocol to perform a case-control study to assess the impact of social distancing and personal protection activities on risk of infection with COVID-19</li> </ul>
Denise Orwig, PhD	<ul style="list-style-type: none"> <li>• Submitted an NIA Supplement to Brigham and Women’s Hospital’s Pepper Center with Dr. Latham for a feasibility study to test an intervention designed to minimize the physical and psychological impact that older people will experience because of inactivity and social isolation as a result of being home bound as a result of COVID</li> <li>• Submitted a PCORI grant with Dr. Latham to test a 4-month remote Behavioral Activation intervention compared to friendly companion phone calls in addressing the negative consequences of social isolation in vulnerable older adults receiving Meals on Wheels of Central Maryland</li> <li>• Collaborating with UMB’s Center for Vaccine Development to increase older adult participation on the Phase 3 RCT testing a COVID vaccine</li> <li>• Submitting an R01 to NIA with Dr. Latham to study the disparities in the effects of COVID pandemic on vulnerable older adults to inform a brief Behavioral Activation intervention and to assess any disparities in response to the intervention</li> <li>• Conducting a study as part of an existing R01 to determine the effects of COVID on rehabilitation and recovery outcomes of hip fracture patients and sustained periods of disability and possible increase in mortality</li> </ul>
Charlene Quinn, PhD,RN	<ul style="list-style-type: none"> <li>• Submitted a manuscript to <i>NEJM</i> entitled, “Is COVID19 the Tipping Point for Adoption of Telehealth for Older Adult Nursing Home and Senior Housing Residents?”</li> <li>• Submitted a PCORI grant titled, “COVID-19 in Diabetic Older African-Americans: Telehealth Intervention Education and Demonstration”</li> </ul>

Alan Rathbun, PhD, MPH	<ul style="list-style-type: none"> <li>Collaborating on a project at the Baltimore and Washington DC VA Medical Centers that strives to assess the impact of social isolation due to quarantine on physical and mental health among veterans</li> </ul>
Shabnam Salimi, MD, MSc	<ul style="list-style-type: none"> <li>Submitted a review paper entitled "COVID-19 and Crosstalk with the Hallmarks of Aging"</li> <li>Submitting an ICTR proposal studying novel biomarkers to distinguish the severity of COVID-19 using different methods across various patients</li> </ul>
Diane Marie St. Geroge, PhD	<ul style="list-style-type: none"> <li>MPH Program was approached with a request to assist a state effort to create a volunteer corps to support homebound older adults who may have emerging needs related to COVID-19</li> <li>MPH Program was asked to assist with developing health education materials for training Arabbers about COVID-19 disease as they serve as trusted information sources in the Baltimore community</li> </ul>
Kristen Stafford, PhD, MPH	<ul style="list-style-type: none"> <li>Awarded a \$2.1 million dollar grant for COVID-19 community based sero-surveillance in Nigeria</li> </ul>
Kerri Thom, MD, MS	<ul style="list-style-type: none"> <li>Spearheaded the conversion of the medical student small groups for Spring 2020 to a remote learning platform and delivered virtually</li> <li>A new course, COVID from Bench to Bedside was created for the current second year medical students to prepare them to enter clinical setting during a pandemic</li> <li>Some of the new curriculum is being converted to new remote learning sessions</li> </ul>
Michael Terrin, MDCM, MPH	<ul style="list-style-type: none"> <li>Co-authored a research letter that was published in the Journal of Aerosol Medicine and Pulmonary Drug Delivery reporting use of inhaled cyclosporine for the treatment of COVID-19 in lung transplant patients</li> <li>Collaborating on an internally (un)funded pilot study and are including COVID-19 patients in a Department of Defense clinical trial of temperature control for the acute respiratory distress syndrome</li> <li>Collaborating on a R21 to the NIH for a study of the microbiome in relation to severity of disease among COVID-19 patients</li> </ul>
Kate Tracy, PhD	<ul style="list-style-type: none"> <li>Working with the UMMS/SOM Disparities Workgroup</li> <li>Submitted "COVID-19 Telehealth Program" to the US Federal Communications Commission</li> <li>Serving as the Project Director and Special Advisor to the Senior Vice Chancellor for Academic and Student Affairs of the USM for implementing the Pilot COVID Testing and Monitoring Program for the University System of Maryland.</li> <li>The Clinical and Translational Research Informatics Center (CTRIC) is providing ongoing data capture and management support for UMB's occupational health monitoring for COVID-19.</li> </ul>

## Research.

The department is the primary home to 47 faculty members in five different cost centers. EPH faculty published a total of 94 peer-reviewed publications and articles and have 109 active awards. Department faculty submitted 128 grant applications totaling \$135.7m in total costs.

Active extramural awards to all faculty with primary appointments in the department totaled \$56.7m (By cost center: \$22.8m to those in the primary EPH cost center; \$21.4m to those in centers/institutes (N=9); and \$12.5 to faculty in the Cooperative Studies Coordinating Center (CSPCC) in Perry Point). Overall, awards were up by 21% from FY2019. Dollars per faculty member remained high with an overall average of \$1.2m per faculty. Total FY2020 federal funding increased 12% over FY2019 and there was a 7% increase in NIH funding. In 2020, 87% of EPH faculty receive funding from federal sources. Finally, based on the 2019 Blue Ridge Report, Epidemiology and Public Health ranked #10 in NIH funding among like departments in schools of medicine nationwide, and ranked EPH #4 among like departments in public schools of medicine. Based on the Blue Ridge Report for the federal fiscal year 2019, Drs. Magaziner, Owen and Terrin were nationally ranked among the top 100 medical school faculty in public health research to receive NIH funding. The department will strive to maintain this level of federally funded research, while at the same time maintaining excellence in education, clinical care and community service.

Program in Health Disparities and Population Health combines research, education, and service to advance health equity by addressing the critical health issues often influenced by the social determinants of health. Newly appointed in May 2019, Director Erin Hager, PhD, and Deputy Director Laundette Jones, PhD,

MPH, plan to increase the Program's funding in coming years. In FY20, the program developed a research project inventory of program affiliate grants to foster collaboration and grant submissions and expanded the membership to **82** (73 in FY19) faculty affiliates, **72** (57 in FY19) from SOM. In FY20, there were **202** active grants totaling **\$115,812,408**. Of these, **181** were from SOM affiliates totaling **\$100,726,938**, with **63** projects totaling **\$18,153,959** from affiliates in the Department of Epidemiology and Public Health and **21** from other UMB schools and UMBC totaling **\$15,085,470**.

#### Research Honors/Awards

- Dan Morgan, MD, MS, Professor, Department of Epidemiology and Public Health, won the 2019 SHEA Mid-Career Scholarship Award.
- Jay Magaziner, Ph.D., MS Hyg, Professor and Chair, Department of Epidemiology and Public Health, was named president of the Fragility Fracture Network in August of 2019. This global organization, which was founded in order to create a multidisciplinary network of experts for improving treatment and secondary prevention of fragility fractures.

#### **Education.**

The EPH educational programs continued to thrive in FY2020 and the graduates are strong representatives of the School of Medicine's public health and epidemiology training. Below are brief updates about each academic program.

- *Clinical Research Education and Training Program - MS in Epidemiology and Clinical Research, Clinical Research Track and Certificate in Clinical Research:* Under the continued leadership of Kristen Stafford, MPH, PhD, the program continues to receive institutional support from the Dean's office. This year we accepted nine MS students, including two MD/MS student from UMSOM. We additionally accepted nine students in the Certificate program. Revenue from tuition remission was stable from last year.
- *PhD and MS Programs in Epidemiology and Human Genetics:* Ann Gruber-Baldini, PhD, continued to lead Epidemiology and Human Genetics Program. FY2020 saw a 26% increase in the number of applications received when compared with FY2019, and we maintained high quality in the applicant pool. Forty-nine PhD students will be enrolled this fall, including seven new students. There will be one new Human Genetics student in the MS Program. We have had a number of students received external funding. One PhD student and one MS HGEN students graduated in FY2019. Three students were funded through an F31, one student was funded on an F30, one with a diversity supplement, one on the ICTR fellowship, 1 Fulbright scholar, 3 Fogarty fellows, one new National Cancer Institute fellow, and 5 students funded on T32 programs.
- *Ph.D. in Gerontology:* The dual-campus program (UMB/UMBC) continued to thrive in its 19<sup>th</sup> year under the co-leadership of SOM faculty, Denise Orwig, PhD and UMBC faculty, John Schumacher, PhD. There are 48 program faculty affiliates across the UMB and UMBC campuses. Three full-time students and one part-time student enrolled for the fall 2019 semester bringing the total enrollment in the program to 22 students. The students were primarily funded on faculty grants or state GRAs. As of May 2020, a total of 44-students graduated, with 2-new graduates this fiscal year. One of the graduates is currently a Policy Analyst with the Medicare Payment Advisory Commission. The second was a post-doctoral fellow in the Pharmaceutical Health Services Research Department in the University of Maryland School of Pharmacy. She has just accepted an assistant professor position in the University of Maryland School of Nursing. Student accomplishments include: 8 student publications (4 first author), 13 oral presentations and poster presentations, and 8 student awards. The program created and distributed their sixth annual newsletter. As a result of a generous donation to the Graduate School we are establishing a joint research in aging fellowship with the University of Costa Rica. With support from the Graduate School we are in the process of developing and online *MS program in Gerontology*.
- *Medical School Teaching:* Kerri Thom, MD, MS, continued to lead as the Director of the Epidemiology Section in the medical school curriculum. In that capacity, Dr. Thom coordinated the epidemiology and biostatistics curriculum, arranged and scheduled lectures/small group sessions, and is active on the Comprehensive Curriculum Committee and the Year 1/Year 2 subcommittee. Dr. Thom also served as Course Director for the clinical elective PREV 540 in public health. EPH faculty members gave 15 lectures in epidemiology and biostatistics: and over one dozen primary/secondary faculty members served as small group facilitators for epidemiology small group sessions. Dr. Thom is a member of the Curriculum

Renaissance Committee and is working with others to implement a new medical student curriculum in August 2020. Dr. Thom will be transition to a new position as of May 1, 2020 and Dr. Anthony Harris will assume the role of Director of the Epidemiology Section of the medical curriculum. Leadership for PREV 540 is under consideration.

- *Master of Public Health (MPH) Program:* The MPH Program, directed by Diane Marie St. George, PhD, enrolled its second cohort of students (n=13) into the newly-revamped 2018 curriculum and graduated 19 students. Two MPH students, Shaikh Afaq and Stephanie Sanchez, were members of the winning UMB team for the DC Public Health Case Challenge at the National Academy of Medicine. Lahila-Carina Ojeda, MPH student and Preventive Medicine resident was selected as one of the National Delta Omega poster winners and presented her work at the American Public Health Association conference in November 2019. We held our first annual student poster session in December 2019.
- *Preventive Medicine Residency:* Wendy Lane, MD, MPH, continued to lead the residency program in FY 19. All residents submitted abstracts for the ACPM Prevention Meeting scheduled for May 2020. Unfortunately, the meeting was canceled because of COVID-19. One resident who graduated in 2019 presented her research at the American Public Health Association Meeting in November 2019. Both residents who graduated in 2019 took the American Board of Preventive Medicine examination in the fall and passed. The program received continued accreditation by the Accreditation Council for Graduate Medical Education with no citations and commendation for our 100% 5-year board exam pass rate. In partnership with the UMMC Greenebaum Cancer Center, we applied for funding from the American Cancer Society to support a third resident who would focus on cancer epidemiology and prevention.

#### Academic Honors/Awards:

- Appendix C provides a detailed reporting of the faculty, staff and student academic honors/awards for FY2020.

#### **Clinical Service.**

EPH has a limited number of faculty providing clinical care services. However, during FY2020, six outstanding faculty members provided clinical care services. Wendy Lane, MD, MPH, continued to provide medical evaluations and consultations for children with possible child abuse and neglect through the hospital Child Protection Team and at the Howard County Child Advocacy Center. She ran several components of an annual full-day retreat to train pediatric interns to identify and treat children suspected of abuse and neglect. Dr. Lane served as a Core Faculty member of the CHAMP program (Child Abuse Medical Professionals), a statewide program to train and support health professionals throughout the state who provide care to children with suspected abuse and neglect. Also, she provided pediatric care at the Baltimore Child Abuse Center, an affiliate of Sinai Hospital. Anthony Harris, MD, MPH, continued as an Associate Hospital Epidemiologist. Surbhi Leekha, MBBS, MPH, continued to serve as Medical Director of the UMMC Department of Infection Prevention and Hospital Epidemiology. Daniel Morgan, MD, MS, continued to serve as the chief hospital epidemiologist for the Baltimore VA Medical Center and Mary-Claire Roghmann, MD, was an associate hospital epidemiologist for the VA Maryland Healthcare System. Jon Baghdadi, MD, PhD, was an Associate Hospital Epidemiologist and worked mainly at the UMMC-Midtown Campus. Drs. Leekha., Baghdadi and Thom had clinical attending responsibilities in infectious disease or internal medicine at the UMMC. Surbhi Leekha, MBBS, MPH, served as Hospital Epidemiology at the University of Maryland Medical Center Downtown and Midtown. Drs. Baghdadi and Harris served as Associate Hospital Epidemiologists.

#### **Community Outreach.**

Community outreach is highly valued by our department. The COVID-19 pandemic in the latter half of the year restricted our ability to participate in some of our usual annual service activities but provided new opportunities for us. For instance, the MPH Program was approached with a request to assist a state effort to create a volunteer corps to support homebound older adults who may have emerging needs related to COVID-19. The program was also asked to assist with developing health education materials for training Arabbers about COVID-19 disease as they serve as trusted information sources in the Baltimore community. In Fall 2019, we supported the SOM Mini-Medical School by conducting focus groups to provide evaluation of MMS outcomes.

The MPH Program has a relatively new (initiated 2018) service-learning requirement for all students in their first term. It has been quite successful. Students were very engaged, and some committed more than the required minimum number of hours. That requirement served as a platform for structured engagement in service. FY2020 projects included a partnership with the SOM Mini-Medical School Summer Camp. That process engaged five students (all camp counselors), two staff and one faculty member for the five-week program. We also had students involved with three initiatives run through the UMB Community Engagement Center—Monday Market, Kids to Farmers Market and PAL Program. In addition, we collaborated with the College Park campus to have students volunteer with Project HEAL which is providing cancer prevention within Baltimore African American churches. We also placed students within the B'More for Healthy Babies Project to provide blood pressure screening and education in West Baltimore community sites.

### **Administration.**

EPH administrative core is fully functioning and running at maximum capacity. The APT Coordinator/Executive Assistant position was filled in June 2020, and we have secured 50% commitment for a communications specialist to manage and update web content and social media outlets, and to assist with graphic arts, publicity and promoting EPH. The department may need additional business FTE if large sponsored projects are funded.

The department's PCA account is balanced and there are no outstanding effort reports for prior fiscal years. Timesheets for nearly 125 employees have been submitted and approved on a timely basis; effort reports are current. Laura Seipp is closely directing payroll activities and we are pleased to continue reducing the number of outlier payroll actions (eg. overpay, leave payout corrections, late pays, etc.). The department's payroll associate is fully functioning; she conducts Day 2 Onboarding for all "new" EPH staff. Over the past year, she has assumed some of routine work performed by the department administrator (eg., submit student awards requests, sponsor new affiliates in the Community System, liaise with staff and supervisors at DOH, request email accounts, etc.).

Staff successfully converted to Quantum Financials. There continue to be discrepancies in data from Raven to Quantum and incorrect postings related to P-card transactions. We are working with the QF Help team to resolve. Reconciling P-cards has been cumbersome since telework because paper copies of the log and "wet" signatures are still required per policy; electronic reconciliations and approvals are routing without difficulty.

The business and administrative staff prepared for mandatory telework with two days' notice and have been able to support the ongoing research and academic activities remotely and without interruption. There have been challenges with getting supplies and resources to some staff because of the restrictions on the P-card—materials cannot be shipped to a personal address. This has been a burden to senior staff and faculty because they have to use personal credit cards to purchase supplies for staff and then seek reimbursement. Additionally, they have to deliver materials to employees because they are not allowed on campus. This restriction has also made purchasing laptops for use in mandatory telework particularly challenging. Senior staff or faculty have had to request permission to go to campus to receive a delivery which they then have to take to IT staff to set up. Having employees come walk through the institution to get a package to IT is wasteful, impractical and risky.

The EPH social media presence continued through Facebook and Twitter. The department continued to publish *EPH Weekly*, a digest of departmental accomplishments and events. New employees are introduced and welcomed in the newsletter.

Finance: All state and revolving accounts balanced at year-end. Year-end balance in the DRIF account was \$808,000. Year-end balance in the IT/LAN account was \$460,000. With the exception of two modest cost centers in one account (IT/LAN) totaling ~\$50,000, funds will be used for cost share (~ \$380,000), a physician recruitment in infectious disease (\$100,000), an active recruitment of a division head (\$100,000), instructional design costs (\$25,000), our annual contract to the Department of Medicine for IT/desktop support (\$98,000), and to upgrade approximately a dozen desktop computers that are more than seven years old and out of service. We expect to use DRIF and LAN funds to cover operating costs associated with telework that cannot be absorbed by grants and contracts. The department incurred approximately \$32,000 in non-personnel

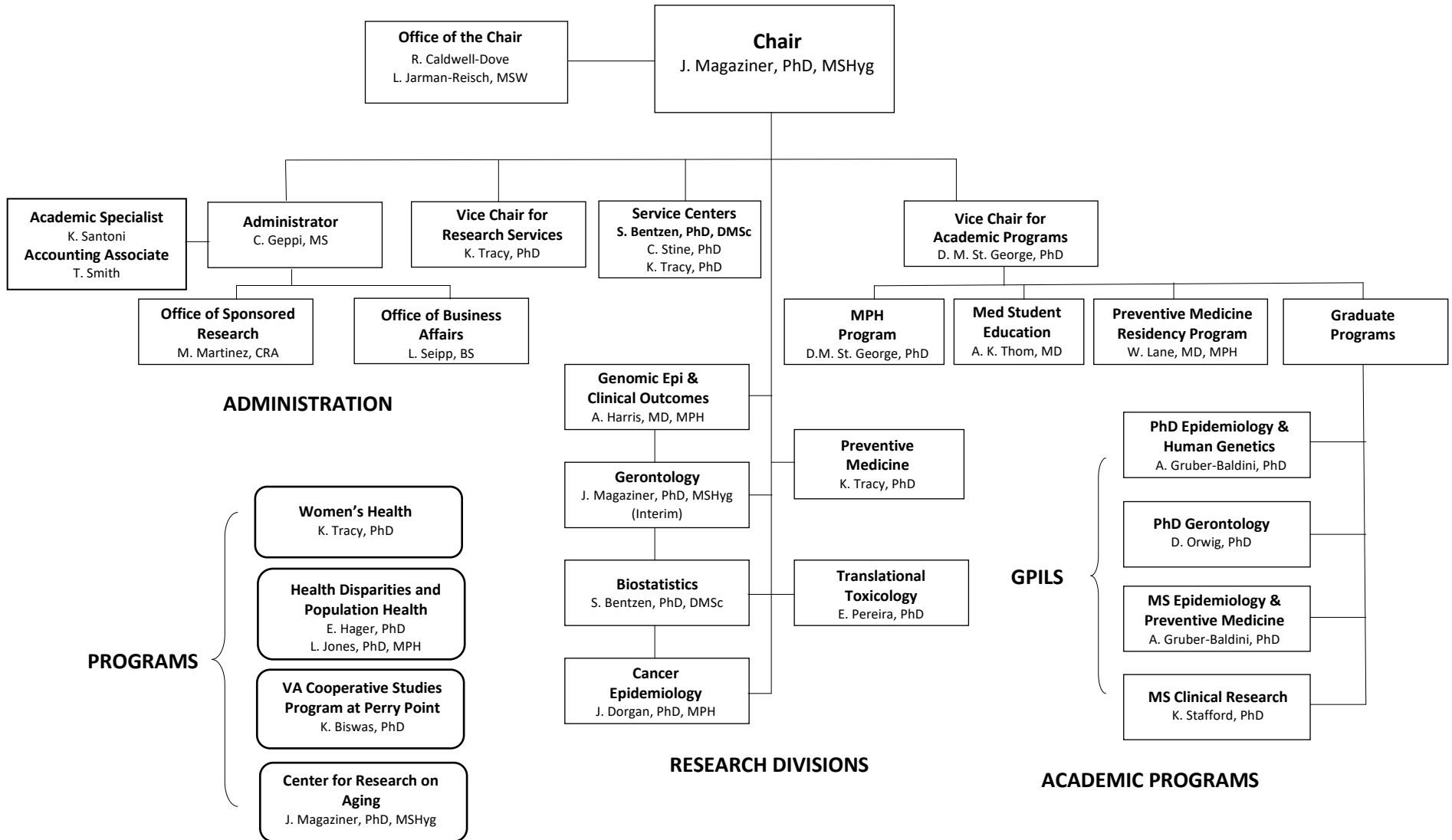


COVID-related operating expenses in the last 3-1/2 months of the fiscal year. A detailed report has been submitted to the campus to include as part of the CARES reimbursement.

All fee-for-service biostatistical support is billed through iLABs. A major user of this service (the VA) is ready for direct billing purposes which is expected eliminate some IPAs which are administratively burdensome, on both sides.

Development: In FY2020, 15 solicitations totaling \$461,500 were made to individuals, foundations, and the University of Maryland Medical System s resulting in \$123,500 in new funds for research and scholarships, including those for the Langenberg Endowment in Women's Health and Epidemiology, the Edson X. Albuquerque Memorial Fund in Toxicology and Pharmacology, the Renee Royak-Schaler Lecture in Health Equity, the Preventive Medicine Residency Endowment. The 7<sup>th</sup> Annual Renee Royak-Schaler Lecture in Health Equity which was to feature Donald Warne, MD, MPH, had to be postponed to April 28, 2021 because of the COVID-19 pandemic.

## Organizational Structure for Department of Epidemiology and Public Health



## EPH Fiscal Year 2020 Publications

Adediran T, Drumheller BC, McCunn M, Stein DM, **Albrecht JS**. Sex Differences in In-hospital Complications Among Older Adults After Traumatic Brain Injury. *J Surg Res*. 2019;243:427-433. doi:10.1016/j.jss.2019.05.053

Adeyemo AA, Zaghoul NA, Chen G, Doumatey AP, Leitch CC, Hosteley TL, Nesmith JE, Zhou J, Bentley AR, Shriner D, Fasanmade O, Okafor G, Eghan B Jr, Agyenim-Boateng K, Chandrasekharappa S, Adeleye J, Balogun W, Owusu S, Amoah A, Acheampong J, Johnson T, Oli J, **Adebamowo C**; South Africa Zulu Type 2 Diabetes Case-Control Study, Collins F, Dunston G, Rotimi CN. ZRANB3 is an African-Specific Type 2 Diabetes Locus Associated with Beta-Cell Mass and Insulin Response. *Nat Commun*. 2019 Jul 19;10(1):3195.

**Albrecht JS**, Al Kibria GM, Greene CR, **Dischinger P**, Ryb GE. Post-Discharge Mortality of Older Adults with Traumatic Brain Injury or Other Trauma. *J Am Geriatr Soc*. 2019 Jul 25. [Epub ahead of print].

**Albrecht JS**, Wickwire EM, Mullins CD, Rao V. Patterns of Psychotropic Medication Use among Individuals with Traumatic Brain Injury. *J Neurotrauma*. 2020;37(8):1067-1073. doi:10.1089/neu.2019.6580

Alsaggaf R, **St George DMM**, **Zhan M**, Pfeiffer RM, Wang Y, Anderson LA, Liu Z, Koshiol J, Bauer AJ, Wagner KR, Greene MH, **Amr S**, Gadalla SM. Benign Tumors in Myotonic Dystrophy Type I Target Disease-Related Cancer Sites. *Ann Clin Transl Neurol*. 2019 Aug;6(8):1510-1518

Auais M, Al-Zoubi F, Matheson A, Brown K, **Magaziner J**, French SD. Understanding the Role of Social Factors in Recovery After Hip Fractures: A Structured Scoping Review. *Health Soc Care Community*. 2019;27(6):1375-1387. doi:10.1111/hsc.12830

Augustinavicius JL, Baral SD, Murray SM, Jackman K, Xue QI, Sanchez TH, **Nowak RG**, Crowell TA, Zlotorzynska M, Olawore O, Lyons CE, Njindam IM, Tamoufe U, Diouf D, Drame F, Kouanda S, Kouama A, Charurat ME, Anato S, Mothopeng T, Mnisi Z, Kane JC. Characterizing Cross-Culturally Relevant Metrics of Stigma among Men who have Sex with Men across Eight Sub-Saharan African Countries and the United States [published online ahead of print, 2020 Jan 13]. *Am J Epidemiol*. 2020;kwz270. doi:10.1093/aje/kwz270

Babaoğlu H, Li J, Goldman D, **Magder LS**, Petri M. Time to Lupus Low Disease Activity State in the Hopkins Lupus Cohort: Role of African American Ethnicity. *Arthritis Care Res (Hoboken)*. 2020;72(2):225-232. doi:10.1002/acr.24063

Baezconde-Garbanati L, Agurto I, **Gravitt PE**, Luciani S, Murphy S, Ochoa C, Gallegos K, Barahona R, Rodríguez Y. Barriers and Innovative Interventions for Early Detection of Cervical Cancer. *Salud Publica Mex*. 2019 Jul-Aug;61(4):456-460.

**Baghdadi JD**, Wong MD, Uslan DZ, Bell D, Cunningham WE, Needleman J, Kerbel R, Brook R. Adherence to the SEP-1 Sepsis Bundle in Hospital-Onset v. Community-Onset Sepsis: a Multicenter Retrospective Cohort Study. *J of Gen Intern Med*. 2020 Feb 10:1-8.

**Barry KH**, Jones RR (shared first), Cantor KP, Beane Freeman LE, Wheeler DC, Baris D, Johnson AT, Hosain GM, Schwenn M, Zhang H, Sinha R, Koutros S, Karagas MR, Silverman DT, Ward MH (shared last Karagas/Silverman/Ward). Ingested Nitrate and Nitrite and Bladder Cancer in Northern New England. *Epidemiology* 2020;31(1):136-144.

Bergom C, West CM, Higginson DS, Abazeed ME, Arun B, **Bentzen SM**, Bernstein JL, Evans JD, Gerber NK, Kerns SL, Keen J, Litton JK, Reiner AS, Rosenstein BS, Sawakuchi GO, Shaitelman SF, Powell SN, Woodward WA. The Implications of Genetic Testing on Radiation Therapy Decisions: A Guide for Radiation Oncologists. *Int J Radiat Oncol Biol Phys*. 2019;105(4):698-712. doi:10.1016/j.ijrobp.2019.07.026

- Bigman G, **Adebamowo S, Adebamowo C**, Badejo O, Jedy-Agba E, Ezeome E, Salu IK. Leisure Time Physical Activity Is Associated with Substantial Reduction in Risk of Breast Cancer and Breast Cancer Subtypes in Nigerian Women (P16-007-19). *Curr Dev Nutr*. 2019 Jun 13;3(Suppl 1).
- Bilgrami Z, Abutaleb A, Chudy-Onwugaje K, **Langenberg P**, Regueiro M, Schwartz DA, **Tracy JK**, Ghazi L, Patil SA, Quezada SM, Russman KM, **Quinn CC**, Jambaulikar G, Beaulieu DB, Horst S, Cross RK Jr. Effect of TELEmedicine for Inflammatory Bowel Disease on Patient Activation and Self-Efficacy. *Dig Dis Sci*. 2020 Jan;65(1):96-103. doi: 10.1007/s10620-018-5433-5. [Epub 2019 Jan 2. Erratum in: *Dig Dis Sci*. 2019 Dec 2.] PMID: 30604373
- Blanco N, Leekha S, Magder L**, Jackson SS, Tamma PD, Lemkin D, **Harris AD**. Admission Laboratory Values Accurately Predict In-hospital Mortality: a Retrospective Cohort Study. *J Gen Intern Med*. 2020;35(3):719-723. doi:10.1007/s11606-019-05282-2
- Blanco N, Harris AD, Magder LS**, Jernigan JA, Reddy SC, O'Hagan J, Hatfield KM, Pineles L, Perencevich E, **O'Hara LM**. Sample Size Estimates for Cluster-Randomized Trials in Hospital Infection Control and Antimicrobial Stewardship. *JAMA Netw Open*. 2019 Oct 2;2(10):e1912644. doi: 10.1001/jamanetworkopen.2019.12644. PubMed PMID: 31584684
- Bodanapally U, Shanmuganathan K, Ramaswamy M, Tsymbalyuk S, Aarabi B, Parikh YG, Schwartzbauer G, Dreizin D, Simard M, Ptak T, Li G, **Liang Y**, Fleiter TR. Iodine-based Dual-Energy CT of Traumatic Hemorrhagic Contusions: Relationship to In-Hospital Mortality and Short-term Outcome. *Radiology* Sept 2019; 292(3): 730-738.
- Brombo G, Bonetti F, Volpato S, Morieri ML, Napoli E, Bandinelli S, Cherubini A, Maggio M, **Guralnik J**, Ferrucci L, Zuliani G. Uric acid within the "normal" range predict 9-year cardiovascular mortality in older individuals. The InCHIANTI study. *Nutr Metab Cardiovasc Dis*. 2019;29(10):1061-1067. doi:10.1016/j.numecd.2019.06.018
- Brown SE, Schwartz JA, Robinson CK, O'Hanlon DE, Bradford LL, He X, Mark KS, Bruni VM, Ravel J, **Brotman RM**. The Vaginal Microbiota and Behavioral Factors Associated With Genital *Candida albicans* Detection in Reproductive-Age Women. *Sex Transm Dis*. 2019;46(11):753-758. doi:10.1097/OLQ.0000000000001066
- Brown JP**, Martin D, Nagaria Z, Verceles AC, Jobe SL, Wickwire EM. Mental Health Consequences of Shift Work: An Updated Review. *Curr Psychiatry Rep*. 2020 Jan 18;22(2):7. doi: 10.1007/s11920-020-1131-z. Review. PMID: 31955278
- Budnik M, **Nowak R**, Fijałkowski M, Kochanowski J, Nargiełło E, Piątkowski R, Peller M, Kucharz J, Jaguszewski M, Gruchała M, Opolski G. Sex-dependent differences in clinical characteristics and in-hospital outcomes in patients with takotsubo syndrome. *Pol Arch Intern Med*. 2020;130(1):25-30. doi:10.20452/pamw.14970
- Burns CJ, **LaKind JS**, Mattison DR, Alcalá CS, Branch F, Castillo J, Clark A, Clougherty JE, Darney SP, Erickson H, Goodman M, Greiner M, Jurek AM, Miller A, Rooney AA, Zidek A. 2019. A Matrix for Bridging the Epidemiology and Risk Assessment Gap. *Global Epidemiology*. Received 31 May 2019, Revised 30 July 2019, Accepted 1 August 2019, Available online 5 August 2019.
- Burns CJ, **LaKind JS**, Mattison DR, Alcada CS, Branch F, Castillo J, Clark AI, Clougherty JE, Darney SP, Erickson H, Goodman M, Greiner M, Jurek AM, Miller A, Rooney AA, Zidek A. A Matrix for Bridging the Epidemiology and Risk Assessment Gap. *Global Epidemiology* 2019 Aug;100005. [doi.org/10.1016/j.gloepi.2019.100005](https://doi.org/10.1016/j.gloepi.2019.100005)
- Cagle JG, Lee J, Ornstein KA, **Guralnik JM**. Hospice Utilization in the United States: A Prospective Cohort Study Comparing Cancer and Noncancer Deaths. *J Am Geriatr Soc*. 2020;68(4):783-793. doi:10.1111/jgs.16294

Caroff DA, Wang R, Zhang Z, Wolf R, Septimus E, **Harris AD**, Jackson SS, Poland RE, Hickok J, Huang SS, Platt R. The Limited Utility of Ranking Hospitals Based on Their Colon Surgery Infection Rates [published online ahead of print, 2020 Jan 9]. *Clin Infect Dis*. 2020;ciaa012. doi:10.1093/cid/ciaa012

Chiotos K, Rock C, Schweizer ML, Deloney VM, **Morgan DJ**, Milstone AM, Henderson DK, **Harris AD**, Han JH. Current Infection Prevention and Antibiotic Stewardship Program Practices: A Survey of the Society for Healthcare Epidemiology of America (SHEA) Research Network (SRN). *Infect Control Hosp Epidemiol*. 2019;40(9):1046-1049. doi:10.1017/ice.2019.172

Chuong MD, Kaiser A, Khan F, Parikh P, Ben-Josef E, Crane C, Brunner T, Okumura T, Schreuder N, **Bentzen SM**, Gutierrez A, Mendez Romero A, Yoon SM, Sharma N, Kim TH, Kishi K, Moeslein F, Hoffe S, Schefter T, Hanish S, Scorsetti M, Apisarnthanarax S. Consensus Report From the Miami Liver Proton Therapy Conference. *Front Oncol*. 2019 May 31;9:457.

Claeys, K. C., Hopkins, T. L., **Brown, J. P.**, & Heil, E. L. (2019). Pharmacists' Perceptions of Implementing a Pharmacist-Managed Area Under the Concentration Time Curve-Guided Vancomycin Dosing Program at a Large Academic Medical Center. *Journal of the American College of Clinical Pharmacy*, 2(5):482-7.

Crowder HR, Brown SE, Stennett CA, Johnston E, Wnorowski AM, Mark KS, **Brotman RM**. Patterns in On-time, Daily Submission of a Short Web-Based Personal Behavior Survey in a Longitudinal Women's Health Study. *Sex Transm Dis*. 2019 Aug;46(8):e80-e82.

Crowell TA, Lawlor J, Lombardi K, **Nowak RG**, Hardick J, Odeyemi S, Kokogho A, Malia J, Stewart C, Robb ML, Baral SD, Adebajo S, Charurat ME, Ake JA, Peel SA, Gaydos CA; TRUST/RV368 Study Group. Anorectal and Urogenital Mycoplasma genitalium in Nigerian Men Who Have Sex With Men and Transgender Women: Prevalence, Incidence, and Association With HIV. *Sex Transm Dis*. 2020;47(3):202-206. doi:10.1097/OLQ.0000000000001105

Conroy SS, Wittenberg GF, Krebs HI, **Zhan M**, Bever CT, Whittall J. Robot-Assisted Arm Training in Chronic Stroke: Addition of Transition-to-Task Practice. *Neurorehabil Neural Repair*. 2019;33(9):751-761. doi:10.1177/1545968319862558

Curcio CL, Wu YY, Vafaei A, Barbosa JFS, Guerra R, **Guralnik J**, Gomez F. A Regression Tree for Identifying Risk Factors for Fear of Falling: The International Mobility in Aging Study (IMIAS). *J Gerontol A Biol Sci Med Sci*. 2020 Jan 1;75(1):181-188. doi: 10.1093/gerona/glz002. PMID: 30753306

Dai X, Wang X, Long Y, Pattison S, Lu Y, **Morgan DJ**, Taylor SH, Carter JH, Hutchings GJ, Wu Z, Weng X. Efficient Elimination of Chlorinated Organics on a Phosphoric Acid Modified CeO<sub>2</sub> Catalyst: A Hydrolytic Destruction Route. *Environ Sci Technol*. 2019;53(21):12697-12705. doi:10.1021/acs.est.9b05088

Denny L., **Adebamowo C.**, Meheus F., Newton R., Sankaranarayanan R. Socioeconomic Factors and Cancer Prevention in Africa. Cervical Cancer as an Example. In Wild CP, Weiderpass E, Stewart BW, editors (2020). World Cancer Report: Cancer Research for Cancer Prevention. Lyon, France: *International Agency for Research on Cancer*. Available from: <http://publications.iarc.fr/586>. Licence: CC BY-NC-ND3.0 IGO.

Dent E, Morley JE, Cruz-Jentoft AJ, Woodhouse L, Rodríguez-Mañas L, Fried LP, Woo J, Aprahamian I, Sanford A, Lundy J, Landi F, Beilby J, Martin FC, Bauer JM, Ferrucci L, Merchant RA, Dong B, Arai H, Hoogendijk EO, Won CW, Abbatecola A, Cederholm T, Strandberg T, Gutiérrez Robledo LM, Flicker L, Bhasin S, Aubertin-Leheudre M, Bischoff-Ferrari HA, **Guralnik JM**, Muscedere J, Pahor M, Ruiz J, Negm AM, Reginster JY, Waters DL, Vellas B. Physical Frailty: ICFSR International Clinical Practice Guidelines for Identification and Management. *J Nutr Health Aging*. 2019;23(9):771-787. doi: 10.1007/s12603-019-1273-z. PubMed PMID: 31641726.

Dheilly NM, Martínez Martínez J, Rosario K, Brindley PJ, Fichorova RN, Kaye JZ, Kohl KD, Knoll LJ, Lukeš J, Perkins SL, Poulin R, **Schriml L**, Thompson LR. Parasite Microbiome Project: Grand Challenges. PLoS

Pathog. 2019 Oct 10;15(10):e1008028. doi: 10.1371/journal.ppat.1008028. eCollection 2019 Oct. PubMed PMID: 31600339

Ding Y, Dvornikov AV, Ma X, Zhang H, Wang Y, Lowerison M, Packard RR, Wang L, Chen J, **Zhang Y**, Hsiai T, Lin X, Xu X. Haploinsufficiency of Mechanistic Target of Rapamycin Ameliorates *Bag3* Cardiomyopathy in Adult Zebrafish. *Dis Model Mech*. 2019;12(10):dmm040154. Published 2019 Oct 1. doi:10.1242/dmm.040154

Dodia NN, Richert ME, Deitchman AR, **Quinn CC**, Marciniak ET, **Brown CH**, **Terrin ML**, Amariei DE, Shanholtz CB, Hasday JD. A Survey of Academic Intensivists' Use of Neuromuscular Blockade in Subjects With ARDS. *Respir Care*. 2019 Sep 10. pii: respcare.07026. doi: 10.4187/respcare.07026. [Epub ahead of print] PMID:31506341

Edwards VL, Smith SB, McComb EJ, Tamarelle J, Ma B, Humphrys MS, Gajer P, Gwilliam K, Schaefer AM, Lai SK, Terplan M, Mark KS, **Brotman RM**, Forney LJ, Bavoil PM, Ravel J. The Cervicovaginal Microbiota-Host Interaction Modulates Chlamydia trachomatis Infection. *MBio*. 2019 Aug 13;10(4). pii: e01548-19.

Ekong E, Ndembi N, Okonkwo P, **Dakum P**, Idoko J, Banigbe B, Okuma J, Agaba P, Blattner W, **Adebamowo C**, Charurat M. Epidemiologic and Viral Predictors of Antiretroviral Drug Resistance Among Persons Living with HIV in a Large Treatment Program in Nigeria. *AIDS Res Ther*. 2020 Feb 17;17(1):7. doi: 10.1186/s12981-020-0261-z. PubMed PMID: 32066473.

Emmanuel B, **Ei-Kamary SS**, **Magder LS**, **Stafford KA**, Charurat ME, Chairez C, McLaughlin M, Hadigan C, Prokunina-Olsson L, O'Brien TR, Masur H, Kottlilil S. Metabolic Changes in Chronic Hepatitis C Patients Who Carry IFNL4-ΔG and Achieve Sustained Virologic Response With Direct-Acting Antiviral Therapy. *J Infect Dis*. 2020;221(1):102-109. doi:10.1093/infdis/jiz435

Farhy E, Diamantidis CJ, Doerfler RM, Fink WJ, **Zhan M**, Fink JC. Use of a Medical-Alert Accessory in CKD: A Pilot Study. *Clin J Am Soc Nephrol*. 2019;14(7):994-1001. doi:10.2215/CJN.13531118

Fortune NC, Harville EW, **Guralnik JM**, Gustat J, Chen W, Qi L, Bazzano LA. Dietary Intake and Cognitive Function: Evidence from the Bogalusa Heart Study. *Am J Clin Nutr*. 2019 Jun 1;109(6):1656-1663

Ganz DA, Siu AL, **Magaziner J**, Latham NK, Trivison TG, Lorenze NP, Lu C, Wang R, Greene EJ, Stowe CL, Harvin LN, Araujo KLB, Gurwitz JH, Agrawal Y, Correa-De-Araujo R, Peduzzi P, Gill TM; STRIDE Investigators. Protocol for Serious Fall Injury Adjudication in the Strategies to Reduce Injuries and Develop Confidence in Elders (STRIDE) study. *Inj Epidemiol*. 2019 Apr 15;6:14.

Gebran SG, Wasicek P, Elegbede A, Ngaage LM, **Liang Y**, Ottochian M, Morrison JJ, Rasko YM, Liang F, Grant MP, Nam AJ. Characterization of Age-Related Injury Patterns and Surgical Treatment of Pediatric Facial Fractures: Analysis of the National Trauma Data Bank. *Journal of Craniofacial Surgery* Epub July 2019.

Goates S, Du K, Arensberg MB, Gaillard T, **Guralnik J**, Pereira SL. Economic Impact of Hospitalizations in US Adults with Sarcopenia. *J Frailty Aging*. 2019;8(2):93-99.

Grattan LM, Lindsay A, **Liang Y**, Kilmon KA, Cohen S, Irani T, Morris JG. The Short- and Long-Term Impacts of Hurricane Irma on Florida Agricultural Leaders as Early Emergency Responders: The Importance of Workplace Stability. *International Journal of Environmental Research and Public Health* Feb 2020; 17(3). pii: E1050. doi: 10.3390/ijerph17031050.

Hack SM, Muralidharan A, Brown CH, Drapalski AL, Lucksted AA. Stigma and discrimination as correlates of mental health treatment engagement among adults with serious mental illness. *Psychiatr Rehabil J*. 2020;43(2):106-110. doi:10.1037/prj0000385

Hahn B, Shrieves ME, Olmstead CK, Yuille MB, Chiappelli JJ, **Pereira EFR, Albuquerque EX**, Fawcett WP. Evidence for Positive Allosteric Modulation of Cognitive-enhancing Effects of Nicotine in Health Human Subjects. *Psychopharmacology* (Berl). 2020 Jan;237(1):219-230. doi: 10.1007/s00213-019-05363-4. [Epub 2019 Nov 4. ] PMID: 31686175

Hammer A, Kahlert J, **Gravitt PE**, Rositch AF. Authors' response: Higher cervical cancer mortality among older women in Denmark could be due to insufficient screening coverage. *Acta Obstet Gynecol Scand*. 2019;98(11):1491. doi:10.1111/aogs.13710.

Harville EW, **Guralnik J**, Romero M, Bazzano LA. Reproductive History and Cognitive Aging: The Bogalusa Heart Study. *Am J Geriatr Psychiatry*. 2020;28(2):217-225. doi:10.1016/j.jagp.2019.07.002.

Hicks PM, Melendez SAC, Vitale A, Self W, Hartnett ME, Bernstein P, **Morgan DJ**, Feehan M, Shakoor A, Kim I, Owen LA, DeAngelis. Genetic Epidemiologic Analysis of Hypertensive Retinopathy in an Underrepresented and Rare Federally Recognized Native American Population of the Intermountain West. *J Community Med Public Health*. 2019;3(1):152. PMID: 31575247

Jung HW, Roh H, Cho Y, Jeong J, Shin YS, Lim JY, **Guralnik JM**, Park J. Validation of a Multi-Sensor-Based Kiosk for Short Physical Performance Battery. *J Am Geriatr Soc*. 2019;67(12):2605-2609. doi:10.1111/jgs.16135.

Kapogiannis D, Mustapic M, **Shardell MD**, Berkowitz ST, Diehl TC, Spangler RD, Tran J, Lazaropoulos MP, Chawla S, Gulyani S, Eitan E, An Y, Huang CW, Oh ES, Lyketsos CG, Resnick SM, Goetzl EJ, Ferrucci L. Association of Extracellular Vesicle Biomarkers With Alzheimer Disease in the Baltimore Longitudinal Study of Aging [published online ahead of print, 2019 Jul 15]. *JAMA Neurol*. 2019;76(11):1340-1351. doi:10.1001/jamaneurol.2019.2462

Kole MJ, Shea P, **Albrecht JS**, Cannarsa GJ, Wessell AP, Miller TR, Jindal G, Gandhi D, Aldrich EF, Simard JM. Utility of the Hijdra Sum Score in Predicting Risk of Aneurysm in Patients With Subarachnoid Hemorrhage: A Single-Center Experience With 550 Patients. *Neurosurgery*. 2020;86(6):783-791. doi:10.1093/neuros/nyz346

Kpadeh-Rogers Z, Robinson GL, Alserehi H, **Morgan DJ, Harris AD**, Herrera NB, Rose LJ, Noble-Wang J, Johnson JK, Leekha S. Effect of Glove Decontamination on Bacterial Contamination of Healthcare Personnel Hands. *Clin Infect Dis*. 2019 Sep 13;69(Supplement\_3):S224-S227. doi: 10.1093/cid/ciz615. PMID: 31517972.

**LaKind JS**, Pollock T, Naiman DQ, Kim S, Nagasawa A, Clarke J. Factors Affecting Interpretation of National Biomonitoring Data from Multiple Countries: BPA as a Case Study. *Environ Res*. 2019 Jun; 173:318-329. Doi: 10.1016/j.envres.2019.03.047. [Epub 2019 Mar 26.] PMID: 30951958

**LaKind JS**, Goodman M. Methodological evaluation of human research on asthmagenicity and occupational cleaning: a case study of quaternary ammonium compounds ("quats"). *Allergy Asthma Clin Immunol*. 2019;15:69. Published 2019 Nov 21. doi:10.1186/s13223-019-0384-8

**Lane W**, Heal C, Banks J. HIV pre-exposure prophylaxis: Knowledge and attitudes among general practitioners. *Aust J Gen Pract*. 2019 Oct;48(10):722-727. doi:10.31128/AJGP-02-19-4860. PubMed PMID: 31569318.

Lauerman MH, Herrera AV, **Albrecht JS**, Chen HH, Bruns BR, Tesoriero RB, Scalea TM, Diaz JJ. Percentage of Mortal Encounters Transferred in Emergency General Surgery. *J Surg Res*. 2019 Jul 2;243:391-398.

Lauerman MH, Herrera AV, **Albrecht JS**, Chen HH, Bruns BR, Tesoriero RB, Scalea TM, Diaz JJ. Interhospital Transfers with Wide Variability in Emergency General Surgery. *Am Surg*. 2019 Jun 1;85(6):595-600.

Lee MJ, Romero S, Velozo CA, **Gruber-Baldini AL**, Shulman LM. Multidimensionality of the PROMIS Self-Efficacy Measure for Managing Chronic Conditions. *Qual Life Res.* 2019 Jun;28(6):1595-1603. Epub 2019 Feb 26.

**Leekha S, O'Hara LM**, Sbarra A, Li S, **Harris AD**. Comparison of surveillance and clinical cultures to measure the impact of infection control interventions on the incidence of methicillin-resistant *Staphylococcus aureus* and vancomycin-resistant *Enterococcus* in the hospital. *Infect Control Hosp Epidemiol.* 2020;41(2):161-165. doi:10.1017/ice.2019.322

Lloyd JT, Waldstein SR, **Hochberg MC, Orwig DL**, Alley DE. Overweight and Obese Have Similar Burden of Hip Fracture as Normal Weight Older Adults. *J Gen Intern Med.* 2019;34(11):2333-2335. doi:10.1007/s11606-019-05151-y

Luu A, Oberdoerster Z, Grignol G, **Merchenthaler I**, Dudas B. Presence of Substance P Positive Terminals on Hypothalamic Somatostatinergic Neurons in Humans: The Possible Morphological Substrate of the Substance P-Modulated Growth Hormone Secretion. *Brain Struct Funct.* 2020 Jan;225(1):241-248. doi: 10.1007/s00429-019-01990-x. Epub 2019 Dec 5. PMID: 31807924

**Magaziner J**, Mangione KK, **Orwig D, Baumgarten M, Magder L, Terrin M**, Fortinsky RH, **Gruber-Baldini AL**, Beamer BA, Tosteson ANA, Kenny AM, **Shardell M**, Binder EF, Koval K, Resnick B, **Miller R**, Forman S, McBride R, Craik RL. Effect of a Multicomponent Home-Based Physical Therapy Intervention on Ambulation After Hip Fracture in Older Adults: The CAP Randomized Clinical Trial. *JAMA.* 2019 Sep10;322(10):946-956. doi: 10.1001/jama.2019.12964. PubMed PMID: 31503309.

Mandal S, Yuan C, Massabuau FC, Pomeroy JW, Cuenca JA, Bland H, Thomas ELH, Wallis DJ, Batten T, **Morgan DJ**, Oliver RA, Kuball M, Williams OA. Thick, Adherent Diamond Films on AIN with Low Thermal Barrier Resistance. *ACS Appl Mater Interfaces.* 2019;11(43):40826-40834. doi:10.1021/acsami.9b13869.

Marcolini EG, **Albrecht JS**, Sethuraman KN, Napolitano LM. Gender Disparities in Trauma Care: How Sex Determines Treatment, Behavior, and Outcome. *Anesthesiol Clin.* 2019 Mar;37(1):107-117.

**Morgan DJ**, Dhruva SS, Coon ER, Wright SM, Korenstein D. 2019 Update on Medical Overuse: A Review [published online ahead of print, 2019 Sep 9]. *JAMA Intern Med.* 2019;10.1001/jamainternmed.2019.3842. doi:10.1001/jamainternmed.2019.3842

**Morgan DJ**. The Overton Window and a Less Dogmatic Approach to Antibiotics. *Clin Infect Dis.* 2020;70(11):2439-2441. doi:10.1093/cid/ciz984

**Morgan DJ**, Zhan M, Goto M, , Franciscus C, Alexander B, Vaughan-Sarrazin M, **Roghamm MC**, Pineles L. The effectiveness of Contact Precautions on methicillin-resistant *Staphylococcus aureus* (MRSA) in long-term care across the United States [published online ahead of print, 2019 Oct 22]. *Clin Infect Dis.* 2019;ciz1045. doi:10.1093/cid/ciz1045. PMID: 31637429

Musuuza JS, McKinley L, Keating JA, Obasi C, Knobloch MJ, Crnich C, Evans CT, Evans ME, Livorsi D, **Morgan DJ**, Perencevich EN, Reisinger HS, Schweizer ML, Suda KJ, Simbartl LA, Safdar N. Correlation of Prevention Practices with Rates of Health Care-Associated *Clostridioides difficile* Infection. *Infect Control Hosp Epidemiol.* 2020 Jan;41(1):52-58. doi: 10.1017/ice.2019.290. Epub 2019 Oct 29. PMID: 31658933

Nadimpalli G, **O'Hara LM, Leekha S**, Calfee DP, Miller LG, **Pineles L**, Blanco N, Johnson JK, **Harris AD**; CDC Prevention Epicenters Program . Association between chlorhexidine gluconate concentrations and resistant bacterial bioburden on skin. *Infect Control Hosp Epidemiol.* 2019;40(12):1430-1432. doi:10.1017/ice.2019.265

Newman AB, Kritchevsky SB, **Guralnik JM**, Cummings SR, Salive M, Kuchel GA, Schrack J, Morris MC, Weir D, Baccarelli A, Murabito JM, Ben-Shlomo Y, Espeland MA, Kirkland J, Melzer D, Ferrucci L.



Accelerating the Search for Interventions Aimed at Expanding the Health Span in Humans: The Role of Epidemiology. *J Gerontol A Biol Sci Med Sci*. 2020 Jan 1;75(1):77-86. doi: 10.1093/gerona/glz230. PMID: 31722007

**Nowak RG**, Ndembi N, Dauda W, Jibrin P, **Bentzen SM**, Nnaji CH, Olaomi O, Darragh TM, Madukwe J, Crowell TA, Baral SD, Blattner WA, **Charurat ME**, Palefsky JM, Cullen KJ; TRUST/RV368 Study Group. Implementation of and Early Outcomes From Anal Cancer Screening at a Community-Engaged Health Care Facility Providing Care to Nigerian Men Who Have Sex With Men. *J Glob Oncol*. 2019 Jul;(5):1-11.

**Nowak R**, Kostrzewa-Nowak D. Assessment of Selected Exercise-induced CD3(+)Cell Subsets and Cell Death Parameters Among Soccer Players. *J Med Biochem*. 2019 Mar 26;38(4):437-444. doi: 10.2478/jomb-2019-0013. [eCollection 2019 Oct. ] PMID: 31496907; PMCID: PMC6708294.

Nowakowska A, Kostrzewa-Nowak D, Buryta R, **Nowak R**. Blood Biomarkers of Recovery Efficiency in Soccer Players. *Int J Environ Res Public Health*. 2019 Sep 6;16(18). pii: E3279. doi: 10.3390/ijerph16183279. PMID: 31500120.

**O'Hara LM**, Calfee DP, Miller LG, **Pineles L**, **Magder LS**, Johnson JK, **Morgan DJ**, **Harris AD**. Optimizing Contact Precautions to Curb the Spread of Antibiotic-resistant Bacteria in Hospitals: A Multicenter Cohort Study to Identify Patient Characteristics and Healthcare Personnel Interactions Associated With Transmission of Methicillin-Resistant Staphylococcus Aureus. *Clin Infect Dis*. 2019 Sep 13;69(Supplement\_3):S171-S177. doi: 10.1093/cid/ciz621. PubMed PMID: 31517979.

Osawa Y, Chiles Shaffer N, **Shardell MD**, Studenski SA, Ferrucci L. Changes in knee extension peak torque and body composition and their relationship with change in gait speed. *J Cachexia Sarcopenia Muscle*. 2019;10(5):1000-1008. doi:10.1002/jcsm.12458

Pellegrini VD Jr, Eikelboom J, McCollister Evarts C, Franklin PD, Goldhaber SZ, Iorio R, Lambourne CA, **Magaziner JS**, **Magder LS**; Steering Committee of The PEPPER Trial. Selection Bias, Orthopaedic Style: Knowing What We Don't Know About Aspirin. *J Bone Joint Surg Am*. 2019 Dec 31. doi:10.2106/JBJS.19.01135. [Epub ahead of print] No abstract available. PMID: 31895235

**Quinn CC**, Staub S, Barr E, **Gruber-Baldini A**. Mobile Support for Older Adults and Their Caregivers: Dyad Usability Study. *JMIR Aging*. 2019 May 23;2(1):e12276. doi: 10.2196/12276. PMID: 31518271.

Raffield LM, Iyengar AK, Wang B, Gaynor SM, Spracklen CN, Zhong X, Kowalski MH, **Salimi S**, Polfus LM, Benjamin EJ, Bis JC, Bowler R, Cade BE, Choi WJ, Comellas AP, Correa A, Cruz P, Doddapaneni H, Durda P, Gogarten SM, Jain D, Kim RW, Kral BG, Lange LA, Larson MG, Laurie C, Lee J, Lee S, Lewis JP, Metcalf GA, Mitchell BD, Momin Z, Muzny DM, Pankratz N, Park CJ, Rich SS, Rotter JI, Ryan K, Seo D, Tracy RP, Viaud-Martinez KA, Yanek LR, Zhao LP, Lin X, Li B, Li Y, Dupuis J, Reiner AP, Mohlke KL, Auer PL; TOPMed Inflammation Working Group; NHLBI Trans-Omics for Precision Medicine (TOPMed) Consortium. Allelic Heterogeneity at the CRP Locus Identified by Whole-Genome Sequencing in Multi-ancestry Cohorts. *Am J Hum Genet*. 2020 Jan 2;106(1):112-120. doi: 10.1016/j.ajhg.2019.12.002. [Epub 2019 Dec 26.] PMID: 31883642.

Reader J, Harper AK, Legesse T, Staats PN, **Goloubeva O**, Rao GG, Fulton A, Roque DM. EP4 and Class III  $\beta$ -Tubulin Expression in Uterine Smooth Muscle Tumors: Implications for Prognosis and Treatment. *Cancers (Basel)*. 2019;11(10):1590. Published 2019 Oct 18. doi:10.3390/cancers11101590

Ren JJ, Sun T, He Y, **Zhang Y**. A statistical analysis of vaccine-adverse event data. *BMC Med Inform Decis Mak*. 2019 May 28;19(1):101

Resnick B, Klinedinst NJ, Yerges-Armstrong L, **Magaziner J**, **Orwig D**, **Hochberg MC**, **Gruber-Baldini AL**, Dorsey SG. Genotype, resilience and function and physical activity post hip fracture. *Int J Orthop Trauma Nurs*. 2019;34:36-42. doi:10.1016/j.ijotn.2019.03.005

Riggs LM, **Aracava Y**, Zanos P, Fischell J, **Albuquerque EX**, **Pereira EFR**, Thompson SM, Gould TD . (2R,6R)-hydroxynorketamine rapidly potentiates hippocampal glutamatergic transmission through a synapse-specific presynaptic mechanism. *Neuropsychopharmacology*. 2020;45(2):426-436. doi:10.1038/s41386-019-0443-3

Riggs LM, **Aracava Y**, Zanos P, Fischell J, **Albuquerque EX**, **Pereira EFR**, Thompson SM, Gould TD. (2R,6R)-Hydroxynorketamine Rapidly Potentiates Hippocampal Glutamatergic Transmission Through a Synapse-specific Presynaptic Mechanism. *Neuropsychopharmacology*. 2020 Jan;45(2):426-436. doi: 10.1038/s41386-019-0443-3. Epub 2019 Jun 19. PMID: 3121656

Robinson GL, Hitchcock S, Kpadeh-Rogers Z, Karikari N, Johnson JK, Blanco N, **Morgan DJ**, **Harris AD**, **Leekha S**. Preventing Viral Contamination: Effects of Wipe and Spray-based Decontamination of Gloves and Gowns. *Clin Infect Dis*. 2019 Sep13;69(Supplement\_3):S228-S230. doi: 10.1093/cid/ciz622. PubMed PMID: 31517980.

Santaus TM, Li S, Saha L, Chen WH, Bhagat S, **Stine OC**, Geddes CD. A comparison of Lyse-It to other Cellular Sample Preparation, Bacterial Lysing, and DNA Fragmentation Technologies. *PLoS One*. 2019 Jul 23;14(7):e0220102:

Santaus TM, Zhang F, Li S, **Stine OC**, Geddes CD. Effects of Lyse-It on Endonuclease Fragmentation, Function and Activity. *PLoS One*. 2019 Sep 30;14(9):e0223008. doi: 10.1371/journal.pone.0223008. eCollection 2019. PMID: 31568482.

Semba RD, Gonzalez-Freire M, Tanaka T, Biancotto A, Zhang P, **Shardell M**, Moaddel R; CHI Consortium, Ferrucci L. Elevated Plasma Growth and Differentiation Factor 15 Is Associated With Slower Gait Speed and Lower Physical Performance in Health Community-Dwelling Adults. *J Gerontol A Biol Sci Med Sci*. 2020 Jan 1;75(1):175-180. doi: 10.1093/gerona/glz071. PMID: 30874790

Shulman LM, Velozo C, Romero S, **Gruber-Baldini AL**. Comparative study of PROMIS(®) Self-Efficacy for Managing Chronic Conditions Across Chronic Neurologic Disorders. *Qual Life Res*. 2019 Jul;28(7):1893-1901.

Stojan G, **Magder LS**, Petri M. Blood Pressure Variability and Age-related Blood Pressure Patterns in Systemic Lupus Erythematosus. *J Rheumatol*. 2020;47(3):387-393. doi:10.3899/jrheum.181131

Surkan PJ, Mezzanotte KS, Sena LM, Chang LW, Gittelsohn J, Trolle Lagerros Y, **Quinn CC**, Zachary WW. Community-Driven Priorities in Smartphone Application Development: Leveraging Social Networks to Self-Manage Type 2 Diabetes in a Low-Income African American Neighborhood. *Int J Environ Res Public Health*. 2019 Jul 30;16(15).

Tamarelle J, Ma B, Gajer P, Humphrys MS, Terplan M, Mark KS, Thiébaud ACM, Forney LJ, **Brotman RM**, Delarocque-Astagneau E, Bavoil PM, Ravel J . Nonoptimal Vaginal Microbiota After Azithromycin Treatment for Chlamydia trachomatis Infection. *J Infect Dis*. 2020;221(4):627-635. doi:10.1093/infdis/jiz499

Tooker GM, **Stafford KA**, Nishioka J, Badros AZ, Riedel DJ. Intravesicular Cidofovir in the Treatment of BK Virus-Associated Hemorrhagic Cystitis Following Hematopoietic Stem Cell Transplantation. *Ann Pharmacother*. 2020;54(6):547-553. doi:10.1177/1060028019897896

Turner BJ, **Liang Y**, Ramachandran A, Poursani R. Telephone or Visit-Based Community Health Worker Care Management for Uncontrolled Diabetes Mellitus: A Longitudinal Study. *Journal of Community Health*, Epub May 2020; <https://doi.org/10.1007/s10900-020-00849-1>

Ubaida-Mohien C, Lyashkov A, Gonzalez-Freire M, Tharakan R, **Shardell M**, Moaddel R, Semba RD, Chia CW, Gorospe M, Sen R, Ferrucci L. Discovery Proteomics in Aging Human Skeletal Muscle Finds Change in Spliceosome, Immunity, Proteostasis and Mitochondria. *Elife*. 2019 Oct 23;8. pii: e49874. doi: 10.7554/eLife.49874. PMID: 31642809.

Uhlman D, Nguyen T, Grignol G, **Merchenthaler I**, Dudas B. Substance P appears to affect growth via growth hormone-releasing hormone (GHRH) neurons in the human hypothalamus. *Brain Struct Funct*. 2019;224(6):2079-2085. doi:10.1007/s00429-019-01890-0

Wasicek P, Gebran SG, Ngaage LM, **Liang Y**, Ottochian M, Morrison JJ, Rasko YM, Liang F, Grant MP, Nam AJ. Contemporary Characterization of Injury Patterns, Initial Management, and Disparities in Treatment of Facial Fractures Using the National Trauma Data Bank. *J Craniofacial Surg* [Epub Aug 2019.]

Wickwire EM, Vadlamani A, Tom SE, Johnson AM, Scharf SM, **Albrecht JS**. Economic aspects of insomnia medication treatment among Medicare beneficiaries. *Sleep*. 2020;43(1):zsz192. doi:10.1093/sleep/zsz192

Wickwire EM, Tom SE, Vadlamani A, Diaz-Abad M, Cooper LM, Johnson AM, Scharf SM, **Albrecht JS**. Older Adult US Medicare Beneficiaries with Untreated Obstructive Sleep Apnea are Heavier Users of Health Care than Matched Control Patients. *J Clin Sleep Med*. 2020 Jan 15;16(1):81-89. doi: 10.5664/jcsm.8128. Epub 2019 Dec 5. PMID: 31957657

Wickwire EM, Vadlamani A, Tom SE, Johnson AM, Scharf SM, **Albrecht JS**. Economic aspects of Insomnia Medication Treatment Among Medical Beneficiaries. *Sleep*. 2020 Jan 13;43(1). pii: zsz192. doi: 10.1093/sleep/zsz192. PMID: 31418027

Yin Z, Ullevig S, Sosa E, **Liang Y**, Olmstead T, Howard JT, Errisuriz V, Estrada V, Martinez C, He M, Small S, Schoenmakers C, Parra-Medina D. Study Protocol for a Cluster Randomized Controlled Trial to Test “Míranos! Look at Us, We Are Healthy!” – an Early Childhood Obesity Prevention Program. *BMC Pediatrics*, Jun 2019;19(1): 190.

Zwierko T, Jedziniak W, Florkiewicz B, Stępiński M, Buryta R, Kostrzewa-Nowak D, **Nowak R**, Popowczak M, Woźniak J. Oculomotor Dynamics in Skilled Soccer Players: The effects of Sport Expertise and Strenuous Physical Effort. *Eur J Sport Sci*. 2019 Jun;19(5):612-620. doi: 10.1080/17461391.2018.1538391. Epub 2018 Oct 31. PubMed PMID: 30378462.

**EPH Fiscal Year 2020 Academic Honors and Awards  
for Faculty, Staff and Students**

**Faculty and Staff**

- Jennifer Albrecht, PhD, Assistant Professor, was awarded the GPILS: Mark E. Shirliff PhD Student Mentoring Award in September 2019.
- Anthony Harris, MD, MPH, Professor, was awarded the 2019 Medical School Teaching Award from the Department of Epidemiology and Public Health.
- Jennifer Albrecht, PhD, Assistant Professor, was awarded the 2020 Epidemiology & Human Genetics Program and Gerontology Programs Faculty Mentoring Award.
- Helen Powell, PhD, Research Associate, was bestowed the 2020 Master of Public Health Teaching and Mentoring Faculty Award.
- Kathryn Barry, PhD, MPH was awarded the 2020 Epidemiology & Human Genetics and Gerontology Programs Faculty Teaching Award.
- 2020 Faculty Inductee into the Delta Omega Honorary Society in Public Health by the Beta Tau Chapter was Jennifer Albrecht, PhD.
- Daniel Morgan, MD was awarded the 2020 Medical Teaching Award.

**Students**

- Cara Dooley was the recipient of the 2020 Robley Dunglison Award for excellence in Preventive Medicine.
- Breanna Tracy was the recipient of the 2020 Abraham Lilienfeld Award for Excellence in Epidemiology and Biostatistics.
- Bradley Knight, MPH Alum was selected his student poster at the 2020 APHA Delta Omega 2020 Student Poster Section.
- 2020 Student and Alumni Inductees into Delta Omega Honorary Society in Public Health by the Beta Tau Chapter.
  - From our alumni –
    - Folasayo Adunola
  - From our 2020 MPH graduating class –
    - Nicole Campion Dialo
    - Natalie Fecteau
    - Dana Ismaeil Hussein
    - Marissa Leigh Khajavi
- 2020 Dorothy and Morris Magaziner Endowment Award was awarded to Roberto Millar and Heather Mutchie.
- 2020 Gerontology Early Career Development Award was awarded to Roberto Millar & Shalini Sahoo
- Langenberg Endowment in Epidemiology & Women’s Health Award awarded fall 2019 and spring 2020 awardees. These individuals included:
  - Fall 2019: Anthony Herrera, Emily Stucke & Aparna Vadlamani
  - Spring 2020: Liana Andronescu and Gita Nadimpalli
- Emily Stucke from the Department of Epidemiology and Public Health was inducted into the 2020 Honor Society of Phi Kappa Phi.
- Albert Zhou was awarded the 2019 Nataro Family Foundation Scholarship.
- Timi Adedirán was awarded the SHEA 6th decennial- Top Abstract at the SER Dissertation Workshop.
- Gita Nadimpalli was awarded the 2020 William Rutala Scholarship Award at the SHEA Decennial 2020.
- Muddassar Iqbal was awarded the NIH and FDA Glycosciences Research Day “Outstanding abstract” award (May 15, 2020) for his work on “Role(s) of the tandem-repeat galectin-9 in adhesion of influenza A virus to human airway epithelial cells”
- Roberto Millar was awarded the Victor E. and Dorothy M. McIntosh Award from the Meyerhoff Graduate Fellow Program.
- Roberto Millar was awarded the Minority Issues in Gerontology Committee Student Poster Award from the Gerontological Society of America (GSA).

## Appendix C – Academic Awards and Honors

- Roberto Millar was awarded the Emerging Scholar and Professional Organization (ESPO) Poster Award from Gerontological Society of America (GSA).
- Heather Mutchie was awarded the *Forming Science-Industry Research Collaborations Award* from GSA .
- Jennifer Kirk was awarded the GGEAR Award for best Oral Presentation at the 2020 UMB Graduate Research Conference Day.
- Jennifer Kirk Haddock was awarded the GGEAR Applied Science Award for Oral Presentation entitled: Sex Differences in Bone-Active Medication Utilization Before and After Hip Fracture.
- Deanna Friedman-Klabanoff was awarded Pichichero Family Foundation Research Development, Vaccines for Children Initiative Award in Pediatric Infectious Diseases in October of 2019.
- Albert Zhou was awarded an F30 grant in August 2019 (F30HL146095-01A1, "The role of RIFINs and their interaction with blood type in vulnerability to severe malaria in Malian children." (NIH/NHLBI)).
- Jennifer Kirk Haddock was selected for the Epidemiology of Aging Training Program (T32 AG00262).
- Nikhil Prasad was selected for the T32 Epidemiology of Aging Grant.
- Emily Stucke was awarded an F31 entitled, "Identification of parasite erythrocyte membrane antigens specific to cerebral malaria and severe malarial anemia pathogenesis."
- Timi Adediran was awarded an NIAID Diversity Supplement.
- Doug Loesch was selected for the T32 fellowship in the Interdisciplinary training program in cardiovascular disease.
- The following students were selected for the T32 Epidemiology of Aging fellowship: Anthony Herrera, Aparna (Vadlamani) Chauhan, Christina Stennett; starting in September are Jennifer French.
- Kathleen Gwilliam was selected for the T32 Grant in the Center for Comparative and Evolutionary Biology of Hearing Predoctoral Fellowship.
- Sarah Robbins was selected to be an Institute for Clinical and Translational Research (ICTR) Scholar
- Patricia Erickson was awarded an NCI Cancer fellowship.