

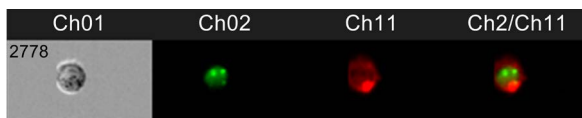
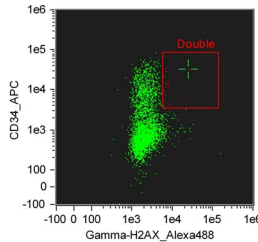
FLOW CYTOMETRY SHARED SERVICES

CIBR: Center for Innovative Biomedical Resources

CORE INSTRUMENTATION

Amnis FlowSight Imaging Cytometer

- 4 lasers: 488 nm, 640 nm, 405 nm, 561 nm
- 10 colors
- 20X magnification
- Autosampler



BD Aria II Cell Sorter

- 4 lasers: 488 nm, 633 nm, 405 nm, 552 nm
- 11 colors
- 96-well single cell sorting, 4-way sorting
- Index sorting
- BSL-2 enhanced sorting inside of bioBUBBLE enclosure



BD LSR II

- 4 lasers: 488 nm, 640 nm, 405 nm, 561 nm
- 13 colors
- High throughput sampler (HTS) for automated acquisition



Image courtesy of BD Biosciences

MISSION

The University of Maryland Greenebaum Comprehensive Cancer Center Flow Cytometry Shared Service (FCSS) offers equipment and technical expertise to the entire campus, as well as outside clients in conducting research in all areas of basic and applied biomedical sciences.

CORE SERVICES

- Experimental design, troubleshooting, consultation and grant application
- Cell sorting performed by staff
- Monthly lecture covers basic knowledge, useful tools, and new development. Free and open to all.
- Hands on training on analyzers (LSR II, Canto II, Accuri C6, and FlowSight) Investigators are encouraged to use the analyzers independently.
- Training on analysis software

ONLINE BOOKING

<https://cibr.umaryland.edu>

FLOW CYTOMETRY SHARED SERVICES

CIBR: Center for Innovative Biomedical Resources

BD CANTO II

- 2 lasers: 488 nm, 640 nm
- 6 colors



BD Accuri C6

- 2 lasers: 488 nm, 640 nm
- 4 colors
- Volume measurement, used to calculate cell concentration without counting beads
- Located in HSF II, S107



Image courtesy of BD Biosciences

ANALYSIS SOFTWARE



FCS Express 6 Site License

From now to 8/31/2018, Flow Core pays for unlimited licenses. All users in the University can register at no charge.



FlowJo Dongles

PC and Mac dongles can be borrowed at no charge.

CONTACT



Xiaoxuan Fan, PhD
Director
XiaoxuanFan@som.umaryland.edu



Karen Underwood, BS
Research Lead Specialist
kunderwood@som.umaryland.edu

LOCATION

Room 7-022, Bressler Research Building
655 West Baltimore Street
Baltimore, MD 21201
410-706-2173
Fax: 410-328-6559

Web Address

http://medschool.umaryland.edu/cibr/UMGCCC_Flow

Email

flowcore@som.umaryland.edu