

# BIOSTATISTICS SHARED SERVICES

CIBR: Center for Innovative Biomedical Resources



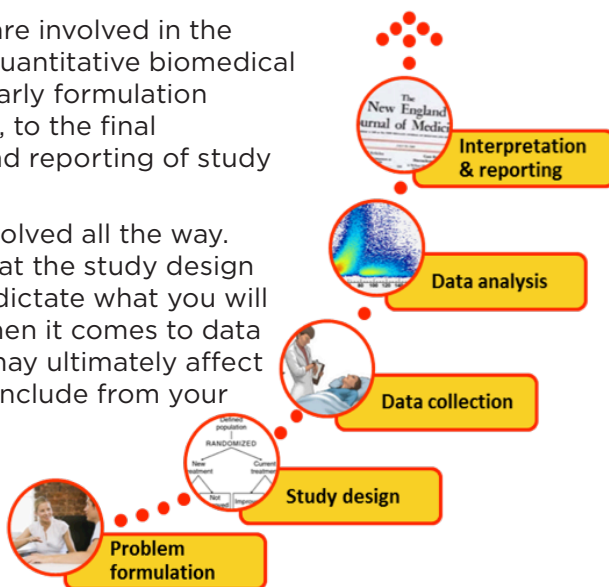
(Front row L-R)  
Min Zhan  
Susan Holt  
Olga Goloubeva  
Yuji Zhang  
(Back row L-R)  
Søren Bentzen  
Larry Magder  
Owen White  
Clay Brown  
Hegang Chen  
& Pat Langenberg  
(not in photo)

Our most important resource is our team of enthusiastic and competent biostatisticians, bioinformaticians and administrative staff. We have expertise in many fields of 'traditional' biostatistics, including study/trial design and multivariable statistical modeling, but also in bioinformatics, high-dimensionality data sets, machine learning, supervised and unsupervised data analysis, mathematical modeling, simulations and much more! We perform statistical programming as needed. Major statistical software available includes SAS, R, Splus, SPSS, Stata, StatXact and East. We also develop customized computer programs for complex statistical problems.

## HOW CAN WE HELP?

Biostatisticians are involved in the whole chain of quantitative biomedical research: from early formulation of research aims, to the final interpretation and reporting of study outcomes.

We like to be involved all the way. Decisions made at the study design stage will often dictate what you will be able to do when it comes to data analysis — and may ultimately affect what you can conclude from your study.



## MISSION

Quantitative biomedical research is a team sport. The biostatistician brings a strong foundation in statistics, mathematics and computational methods, augmented by knowledge of the field of application and familiarity with biomedical concepts and terminology.

## CORE SERVICES

We collaborate on all aspects of design, analysis, interpretation, and reporting of quantitative biomedical research, see left.

## A FEW PRACTICAL NOTES

- The biostatistics service runs by appointment only.
- We will try to link you up with a biostatistician who has domain expertise and/or relevant methodology expertise AND available time.
- It takes time to set up an appointment, to provide advice and to act on the advice — last-minute consultations may not produce optimal service and are discouraged.
- We do not provide individual tutoring as a substitute for proper biostatistics education (e.g., as part of a degree program).
- For input to a grant proposal and for significant input to a research project or a data analysis, the biostatistician should be included as a co-investigator.

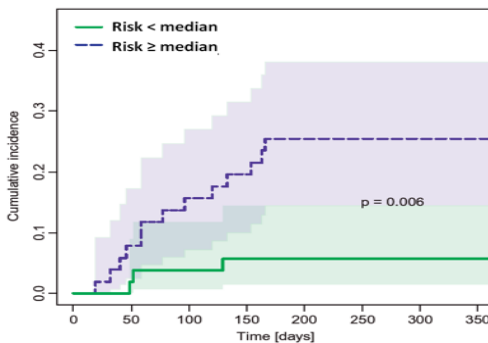
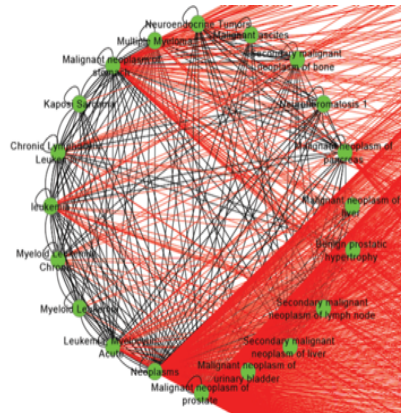
# BIOSTATISTICS SHARED SERVICES

CIBR: Center for Innovative Biomedical Resources

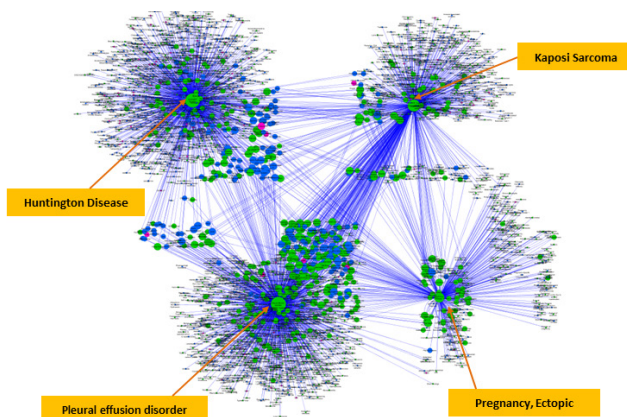
## RESEARCH

*Example 1: Association network related to "Malignant neoplasm of prostate" and "leukaemia" using the Latent Dirichlet allocation (LDA) based topic modelling approach.*

*Cancer Informatics 2014; 13: 45-51.*



*Example 2: Cumulative incidence of radiation pneumonitis for patients in an independent validation cohort grouped according to predicted risk. Shaded areas: 95% confidence intervals.*  
*Acta Oncol. 2014;53(5):605-12*



*Example 3: Overview of Huntington disease-specific association network. In total, there are 3316 associations among 2499 biological entities (1253 diseases, 1131 chemical drugs, and 115 genes).*

*Proceedings of IEEE International Conference on Bioinformatics and Biomedicine 2013, 72-75.*

## CONTACT

### Appointments and Information

Susan Holt  
Administrative Coordinator  
sholt@som.umaryland.edu  
410-706-8505  
Fax: 410-706-8548



Søren M. Bentzen, MSc, PhD, DMSc  
Director  
sbentzen@som.umaryland.edu

### LOCATION

Department of Epidemiology and  
Public Health  
Division of Biostatistics and  
Bioinformatics  
660 W. Redwood Street, HH109  
Baltimore, MD 21201

### Web Address

[http://www.umgcc.org/research/  
biostatistics.htm](http://www.umgcc.org/research/biostatistics.htm)

[http://medschool.umaryland.edu/  
epidemiology/div\\_bio.asp](http://medschool.umaryland.edu/epidemiology/div_bio.asp)